

Service Service Service

A96-350

Product Service Group CE Audio

Service Information

This Service Information is valid for the following typenumbers:

AS440, AS445, AS450, AS455, AS540, AS545, AS550, AS640, AS641, AS642, AS645, AS650, AS655, AZ8040, CD60, CD70, CD80, CD91, CD163, CD165, CD410, CD690/2x, CD692/2x, CD710, CD720, CD730, CD732, CD733, CD740, CD750, CD910, CD911, CD920, CD921, CDC263, CDC265, CDC745, CDC751, CDC794, CDC796, CDC915, CDC916, CDC925, CDC926, CDC935, CDC936, CS1600, CS2600, FW14, FW15, FW20, FW21, FW30, FW31, FW36, FW40, FW41, FW54, FW56, FW70, FW80, and all future sets using the CDM12.1.

CHARGED CAPACITORS ON THE SERVO BOARD MAY DAMAGE THE CDM-ELECTRONICS WHEN CONNECTING A NEW CDM MECHANISM. THAT'S WHY, BESIDES THE SAFETY MEASURES LIKE

- **SWITCH OFF POWER SUPPLY**

- **ESD PROTECTION**

ADDITIONAL ACTIONS MUST BE TAKEN BY THE REPAIR TECHNICIAN.

The following steps have to be done when replacing the CDM mechanism:

1. Disconnect old CDM flexfoil from printed board
2. Connect paperclip to CDM flexfoil to short-circuit flexfoil (fig.1)
3. Short-circuit printed board with **brass-sheet (4822 321 11197)** plugged into the flexfoil connector (fig.2)
4. Remove old CDM mechanism
5. Position new CDM mechanism in its studs
6. Remove short-circuit from printed board connector
7. Remove short-circuit from flexfoil of new CDM
8. Connect new flexfoil to print connector (fig.3)

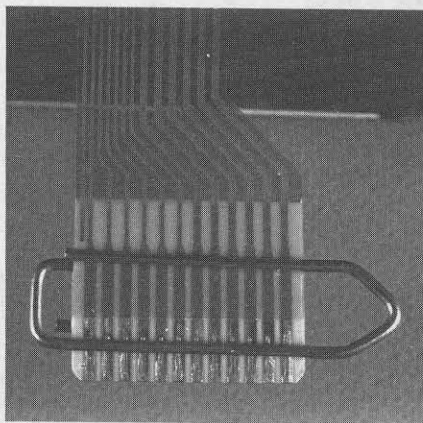


fig.1

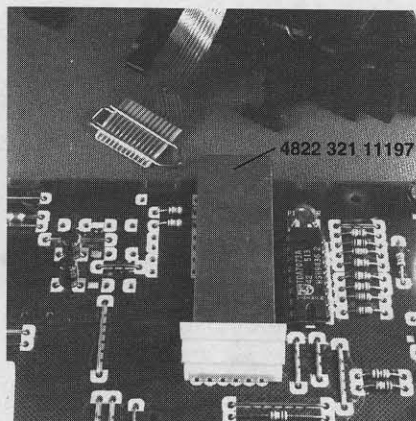


fig.2

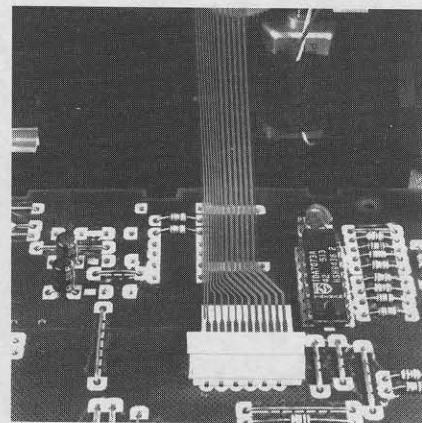


fig.3