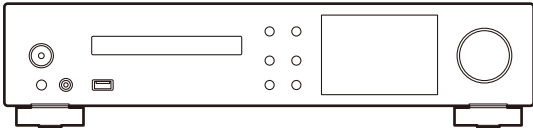


Service
Manual



NC-50DAB

ORDER NO.
ARP4022-R2

Network CD Receiver

NC-50DAB(B) /WGP

NC-50DAB(S) /WGP



THIS MANUAL IS APPLICABLE TO THE FOLLOWING MODEL(S) AND TYPE(S).

Model	Type	Power Requirement	Remarks
NC-50DAB(B),(S)	WGP	AC 220 V to 230 V	Europe

NOTE ON REPLACING CD MECHA

[Removing the CD Mecha]

Before removing the Pickup PCB and Flat Cable, short circuit the position shown in Fig. 1 using a soldering iron.

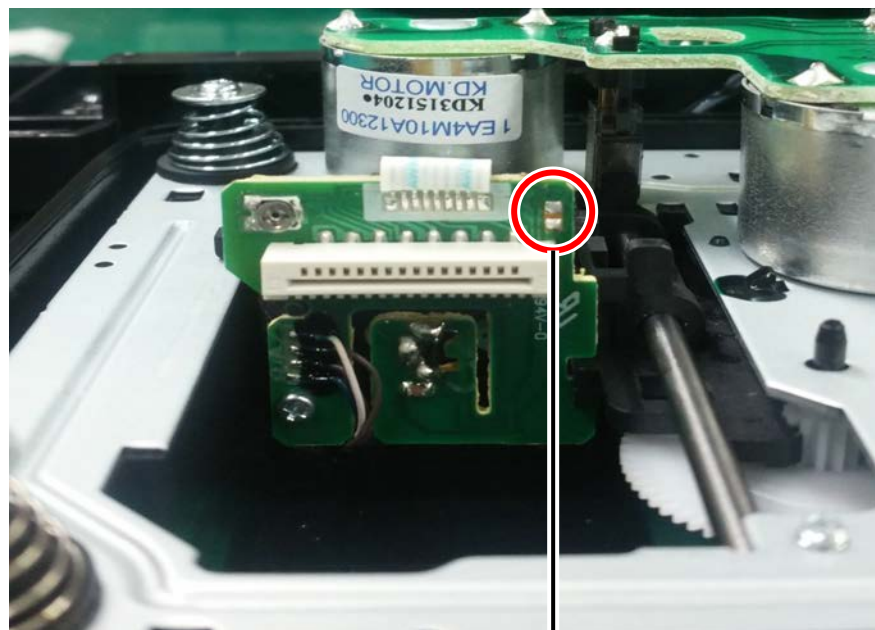
" To remove the CD Mecha, remove simultaneously with the CD ASSY connected to Flat Cable, and then disconnect the Flat Cable after short circuit using a soldering iron. "

If you remove the Flat Cable with no soldering, the Laser may be damaged.

[Installing the CD Mecha]

Remove the solder on the short circuit position after connecting the Pickup PCB and CD ASSY with Flat Cable.

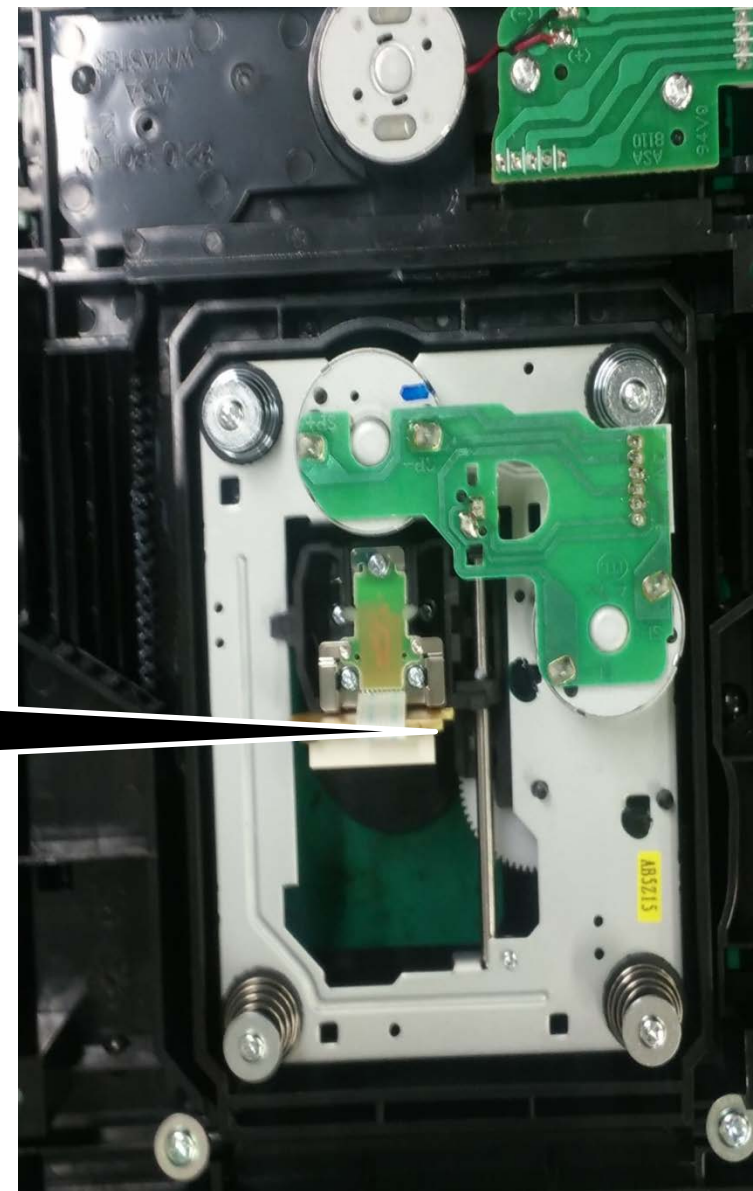
Fig. 1



Soldering short land
Short circuit using a soldering iron.

SERVICE PRECAUTIONS

* Bottom side



COMMON

How to Remove Network Module with JIG (0J35)

JIG : Number 「0J35」



Step1 : Remove the Top cover.

Step2 : Remove the antenna of WiFi (2 points).

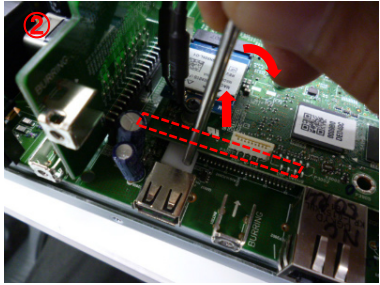
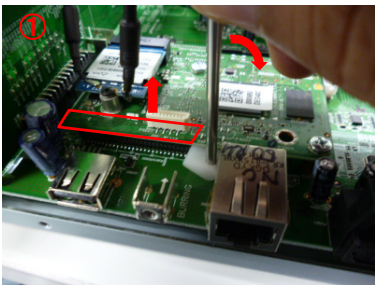


Step3 : Remove the screw (2 points).

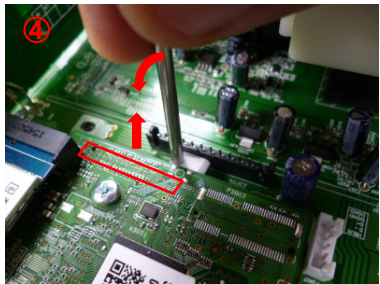
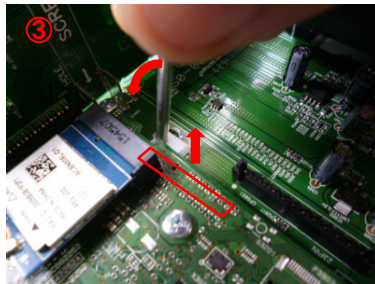


Step4 : Raise the Network Module from all quarters as not bent the pin by using JIG slowly.

①② Put in JIG between MAIN board and Network module, and raise Network module by using principle of lever as below slowly.



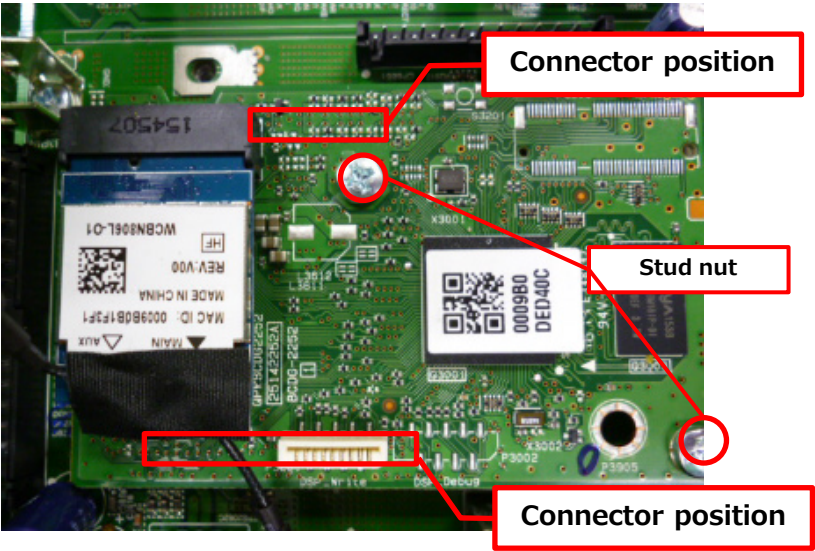
③④ Put in JIG between MAIN board and Network module, and raise Network module by using principle of lever as below slowly.



Step5 : Repeat ① to ④ and remove the network module when it was raised well.

Notes for installing Network Module

Adjust the positioning by referring stud nut as not misaligned the connector.
Apply force to upper side of the connector uniformly as not inserting obliquely.



Notes for exchanging Network Module.

When you exchanged Network Module, You must update all firmware by referring procedure "USB /***ALL".

Also check the normal network function once after exchanging Network Module.

How to read suffix code of this model

Note for suffix code

The following is explanation for the suffix code.

F S - S 4 0 (W) M U P

Model No.

Look at the 2 digits of end of serial number on rear panel.

Color

Black	B
Brown	BR
Cherry	C
Gold	G
Green	GR
Gray	H
Black	K
Blue	L
Light Blue	LB
Wood	M
Orange	O
Pink	P
Red	R
Silver	S
Violet	V
White	W
Yellow	Y

Production factory

Malaysia	M
China	C
Japan	U
Others	W

Voltage

120V AC	D
220~230V	G
220~230/240V	H
100V AC	J
220~240V AC	M
230V AC	P
100~240V AC	U
110~240V	V
120V/220~240V	W

Speaker System (without AMP.) :

Passive Subwoofer	0
Front Speaker	F
Center Speaker	C
Rear Speaker	R
Back Speaker	B

Destination

Australia	A	← PP
United Kingdom	B	← GB
North American	C	← UC
USA	D	← UC
Taiwan	F	← TA
Japan	J	← JP
Korea	K	← KA
Russia	L	← ER
Europe	P	← YY
Hong Kong	Q	← HK
China	R	← CN
Brazil	S	← CS
Thai	T	← LE
Worldwide	U	← WL

Speaker System (without AMP.) :

Left channel	L
Right channel	R
Center channel	0

COMMON

How to Reset the Unit

Reset

- 1. [INPUT] + [STOP] (3 sec.)
- 2. [SOURCE]
- 3. [PLAY/PAUSE]

NC-50DAB

Protection

Protection

This function is for avoiding the rupture of electrolytic capacitors with amplifier circuit failure during power-ON.

	MCU Port			Display of Protection	Recover Operation	Service Mode
PROTECT	IC7009 129 pin	Current Protection	High Active	Blue LED Blink Blinking Time: 0.5sec	Possible Power ON	Enter protect confirmation mode by special operation. Display how many time occurred protection to LCD display
	IC7009 130 pin	Voltage Protection	High Active	Blue LED Blink Blinking Time: 1sec	Impossible Power ON refer “How to clear Protect Lock” section	

Working of the protection

When the device detect over electric current and voltage,
The device will be standby mode automatically.

Current Detection

When the device detect over electric current, The device will be standby mode automatically.
And Blue LED will be blinking about 0.5sec. Possible to Power ON

Voltage Detection

When the device detect over voltage, The device will be standby mode automatically.
And Blue LED will be blinking about 1sec. Impossible to Power ON.
You have to clear the information of protection by enter service mode as below.

How to clear Protect Lock

Push “STNDBY” and “STOP” key of the device during 5 seconds, clear protect lock.
this operation is just only “ Clear Protect Lock” . The device don’t power on

Making sure protect and procedure of clear information

- How to make sure protect information
- 1 . Push “SKIP DOWN/REW” and “SKIP UP/FWD” key of the device during 3 seconds, enter Display mode of Main Debug Version.
 - 2 . During display Main Debug Version, push “OPEN/CLOSE” key of the device, Display Service information.
 - 3 . Push SKIP UP/DOWN, It shows how many times of the current protection or voltage protection alternately.
 - 4 . Push “STOP” key of the device, you can clear protect information..

[Version Check (Easy check)]

Step1 : [FF] + [STOP] Press about 3 seconds
It will enters Firmware Version display mode.

Step2 : [FF] (Push FF Key 1 click)
Main Firmware Version will appear on the main unit's display.

Step3 : [FF +1] (Push Up Key 2 click)
NET Firmware Version will appear on the main unit's display.

[Version Check (Debug Mode)]

Step4 : [REW] + [FF] Press about 3 seconds
Main Firmware Version will appear on the main unit's display.

Step5 : [FF +1] (Push Up Key 1 click)
NET Firmware Version will appear on the main unit's display.

Step6 : [FF +2 over] (Push Up Key 2 click over)
Return to Display Main Firmware Version (Return Step1)

If [REW] key is pressed, the order will be reversed.

[Preparation of Update]

- 1. Connect the USB storage device to your PC. If there is any data in the USB storage device, remove it.
- 2. Download the firmware file (package file) from the service website normally accessed.

Filename is as follows: PIOHIM1001*****.zip

Unzip the downloaded file. A following file is created.

PIOHIM1001 *****.of0
PIOHIM1001 *****.of1
PIOHIM1001 *****.of2
PIOHIM1001 *****.of3
PIOHIM1001 *****.of4

- 3. Copy it to the USB storage device. Be careful not to copy the zip file.
- 4. Remove the USB storage device from your PC.

How to Update (service mode) 1/2

Firmware

Overwriting is also possible.

1. Connect the USB storage to the USB port on the unit.



2. Turn on the unit. It takes some time to start after you switch on the unit.
Press: [REW] + [FF] press about 3 seconds and show firmware version.
3. Press [STOP] key, Then it is displayed as below



If you need each module of the firmware update, you can select the module by pressing [FF] or [REW] key.

If you need change source NET or USB, you can select the source by pressing [INPUT] key

It should be updated firmware by selecting USB /***ALL normally.

Please do NOT choose T-SRV(it is test server)

USB /***ALL: ALL firmware update (default)

USB /***NET: NET firmware update

USB /***MMPU: Main MPU firmware update

USB /***WORK: Compare between AVR and USB, Only update new version firmware

NET /***ALL: ALL firmware update (default)

NET /***NET: NET firmware update

NET /***MMPU: Main MPU firmware update

NET /***WORK: Compare between AVR and MMC,

Only update new version firmware by network

The default setting is " ALL "



**CAUTION: When you will update each module firmware,
you have to keep combination of firmware.**

4. Press [PLAY/PAUSE] key, Start update firmware.



6. Press [ON/STANDBY] button, and the unit turns on.

7. Check the new FW version number.

<Note>

If the procedure might not be successful, please select "USB -> ALL".

5. Wait until update is completed. When the update ends, "COMPLETE Please Power Off !" is displayed.

When "COMPLETE Please Power Off !" message appeared, you can power off by pressing " ON/STANDBY" key.



IMPORTANT!!

Back Ground:

It is totally different from Radio Law at the each country on 5GHz band.
It means it is totally different from enabled Channel of 5GHz band at the each country.
We define the “Country Code” for 5GHz band.
You must set up the appropriate country code to the product.

Example;

Case1:
When you use the “P” destination products and bring move to Russia or Israel,
If you did not setup change country code and use in Russia and Israel,
You will be on the illegal Radio Law in Russia and Israel.
Case2;
When you use “C” or “D” destination product bring move to Japan or Taiwan,
If you did not setup change country code and use in Japan and Taiwan,
You will be on the illegal Radio Law in Japan and Taiwan.

Service Parts information:

The default country code is set on “CPU Board(702808061xxxx)”.
You must make sure and set up the “Country Code” when you replace the processing circuit pc board.
Otherwise You and your customer should be on the illegal Radio Law and

IT HAS POSSIBILITY TO HAVE A RISK OF
PUNISHMENT FROM EACH COUNTRY GOVERNMENT.

If you did not make sure country code and no setup code and face any trouble,
We does not have any responsibility.

For setting up the Country Code,
Please ask the procedure of changing country code
to your distributor or our sales.
It is no described the procedure of changing Country Code on this Service Manual

If you have any trouble of unclear procedure for update country code,
Please contact our sales department.

PRC Board Default Value of Country Code

The PRC board is already set default Country Code by the representative destination.
To confirm the default country code, Please refer to the "How to read 702808061xxxxpart number and Default value of Country Code" section.

Figure Country List (need to set up)

IMPOTANT!!

Make sure and Setup Country Code

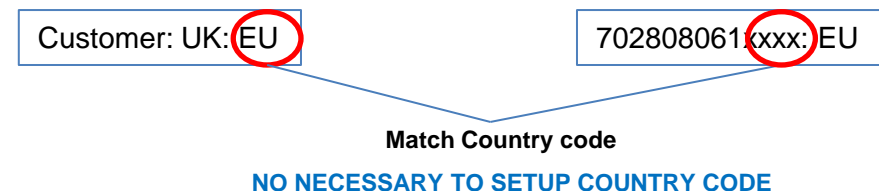
You have to make sure country code for using or replacing “Processing Circuit PC Board”.

It means that you have to make sure [country code](#) between using Processing Circuit PC board(702808061xxxx) and your customer’s country code.

When it is not match 702808061xxxx default country code and customer’s country, you have to setup [Country Code](#).

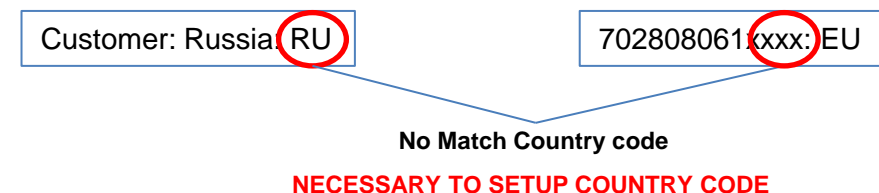
Case3;

When you repair the “P” destination products and replace “P” destination 702808061xxxx and the customer live in UK, It is no necessary to setup Country Code Because “P” destination 702808061xxxx already setup “EU” country code.



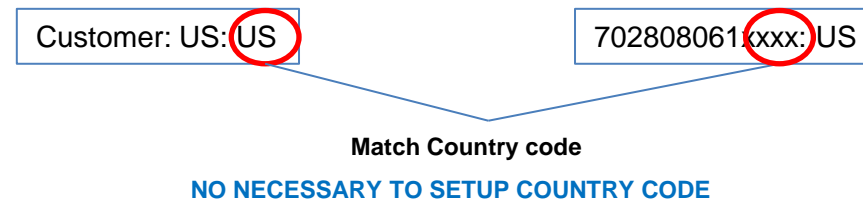
Case4;

When you repair the “P” destination products and replace “P” destination 702808061xxxx and the customer live in Russia, It is necessary to setup Country Code Because “P” destination 702808061xxxx already setup “EU” country code. However, the customer’s country code is “RU”. It means no match 702808061xxxx code and Customer’s code.



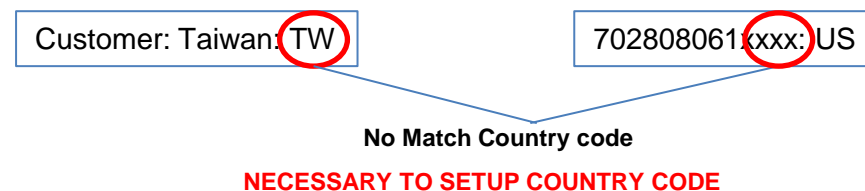
Case5;

When you repair the “C” destination products and replace “C” destination 702808061xxxx and the customer live in US, it is no necessary to setup Country Code Because “C” destination 702808061xxxx already setup “US” country code.



Case6;

When you repair the “C” destination product and replace “C” destination 702808061xxxx and the customer live in Taiwan, It is necessary to setup Country Code. Because “C” destination 702808061xxxx already setup “US” country code as default. However, the customer’s country code is “TW”. It means no match 702808061xxxx code and the customer’s country code



Region	Country	Code
America	USA	US
	Canada	US
	Mexico	US
	Brazil	US
	Chile	CL
	Guatemala	US
	Puerto Rico	US
	Trinidad	TT
	Dominican Rep	US
	Argentina	AR
	Ecuador	US
	Paraguay	PY
	Colombia	US
	Guam	US
	Panama	US
	Costa Rica	US
	Uruguay	UY
	Peru	PE

Region	Country	Code
Asia / Oceania	Japan	JP
	China	CN
	Hong Kong	EU
	Korea	KR
	Taiwan	TW
	Singapore	SG
	Malaysia	MY
	Philippines	EU
	Vietnam	EU
	Indonesia	ID
	Sri Lanka	EU
	Australia	AU
	New Zealand	AU
	Thailand	EU
	India	IN
	Pakistan	PK

Region	Country	Code
Middle East	UAE	EU
	Bahrain	BH
	Kuwait	KW
	Oman	EU
	Qatar	QA
	Lebanon	EU
	Jordan	JO
	Saudi Arabia	EU

Region	Country	Code
Europe / Africa	Germany	EU
	UK	EU
	France	EU
	Netherlands	EU
	Italy	EU
	Switzerland	EU
	Denmark	EU
	Sweden	EU
	Austria	EU
	Belgium	EU
	Spain	EU
	Norway	EU
	Finland	EU
	Czech	EU
	Israel	IL
	Ukraine	EU
	Hungary	EU
	Slovakia	EU
	Luxembourg	EU
	Turkey	EU
	Portugal	EU
	Malta	EU
	Latvia	EU
	Poland	EU

Region	Country	Code
Europe / Africa	Cyprus	EU
	Estonia	EU
	Slovenia	EU
	Bulgaria	EU
	Greece	EU
	Romania	EU
	Lithuania	EU
	Serbia	EU
	Croatia	EU
	Ireland	EU
	Macedonia	EU
	Moldova	EU
	Russia	RU
	Andorra	EU
	Armenia	EU
	Azerbaijan	EU
	Belarus	EU
	Bosnia and Herzegovina	EU
	Northern Cyprus(Turkey)	EU
	Georgia	EU
	Iceland	EU
	Kazakhstan	EU

Region	Country	Code
Europe / Africa	Liechtenstein	EU
	Monaco	EU
	Montenegro	EU
	San Marino	EU
	Vatican City	EU
	Kosovo	EU
	Kaliningrad(Russia)	RU
	Gibraltar(UK)	EU
	Canary Islands(Spain)	EU
	Ceuta	EU
	Melilla	EU
	Morocco	MA
	Algeria	EU
	Tunisia	TN
	Egypt	EG
	Mauritius	US
	South Africa	EU

702808061xxxx

Board No.

Suffix No.

Suffix No.

NC-50DAB(B)WGP(PIONEER)/CPU Board Default setting Country Code

Suffix	Code	Main Country	Model
9010(MMP)	EU	Europe	NC-50DAB
9030(MJJ)	JP	Japan	NC-50

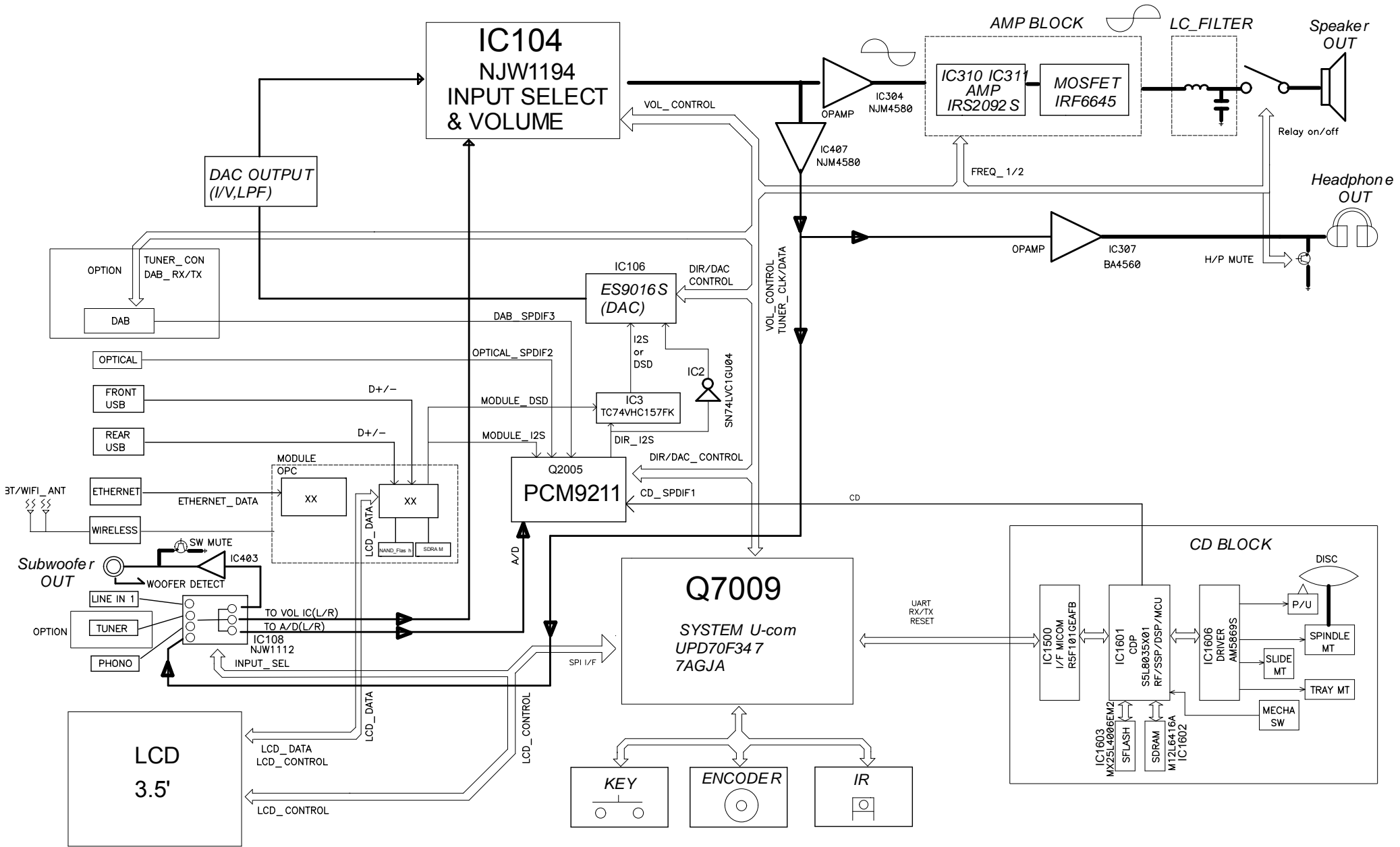
How to check model and destination

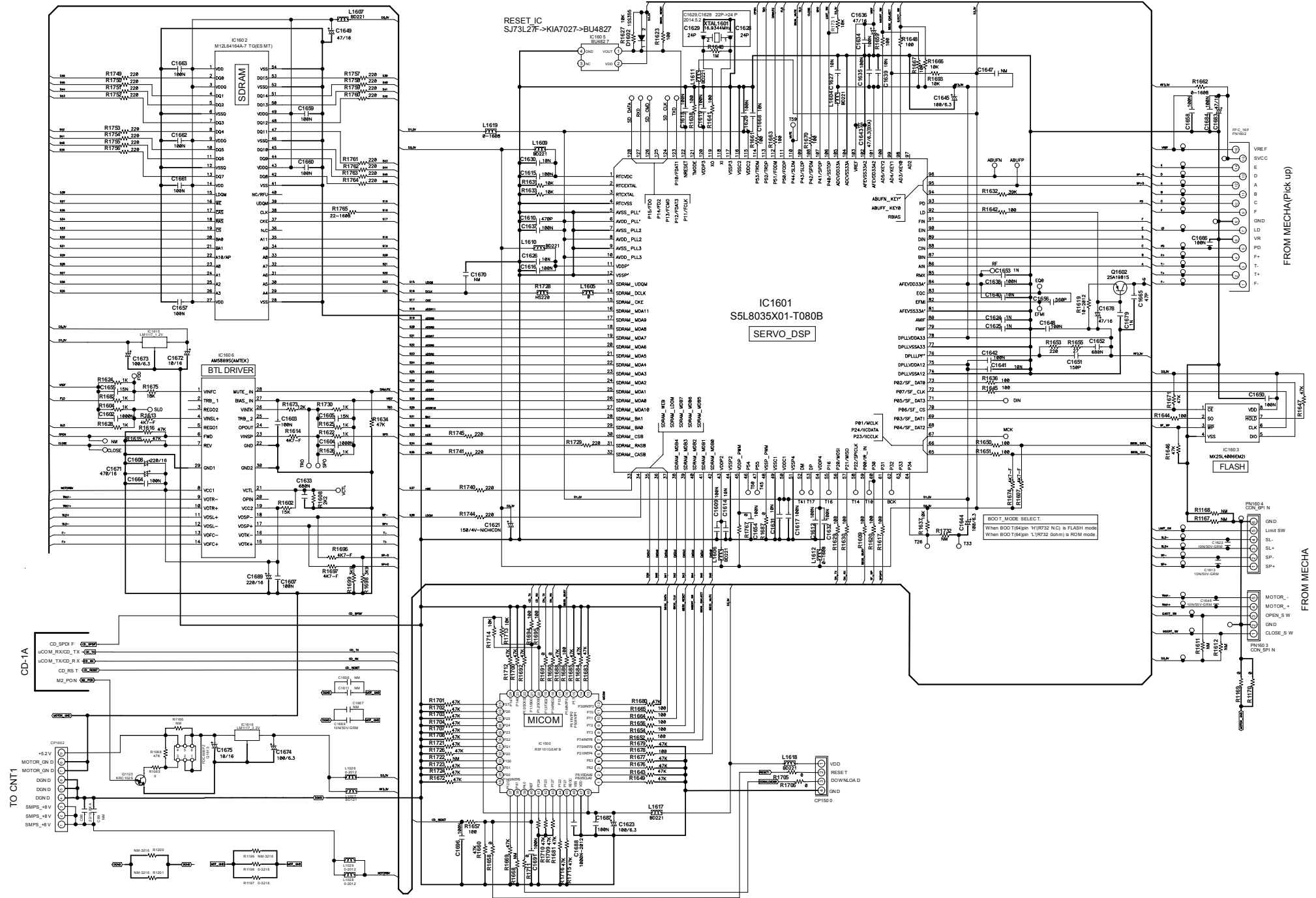
Model and Destination

- 1. [INPUT] + [STOP] (3 sec.)
- 2. [SOURCE]
- 3. [FORWARD/BACK]

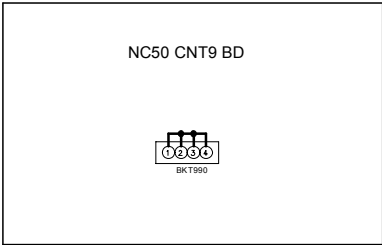
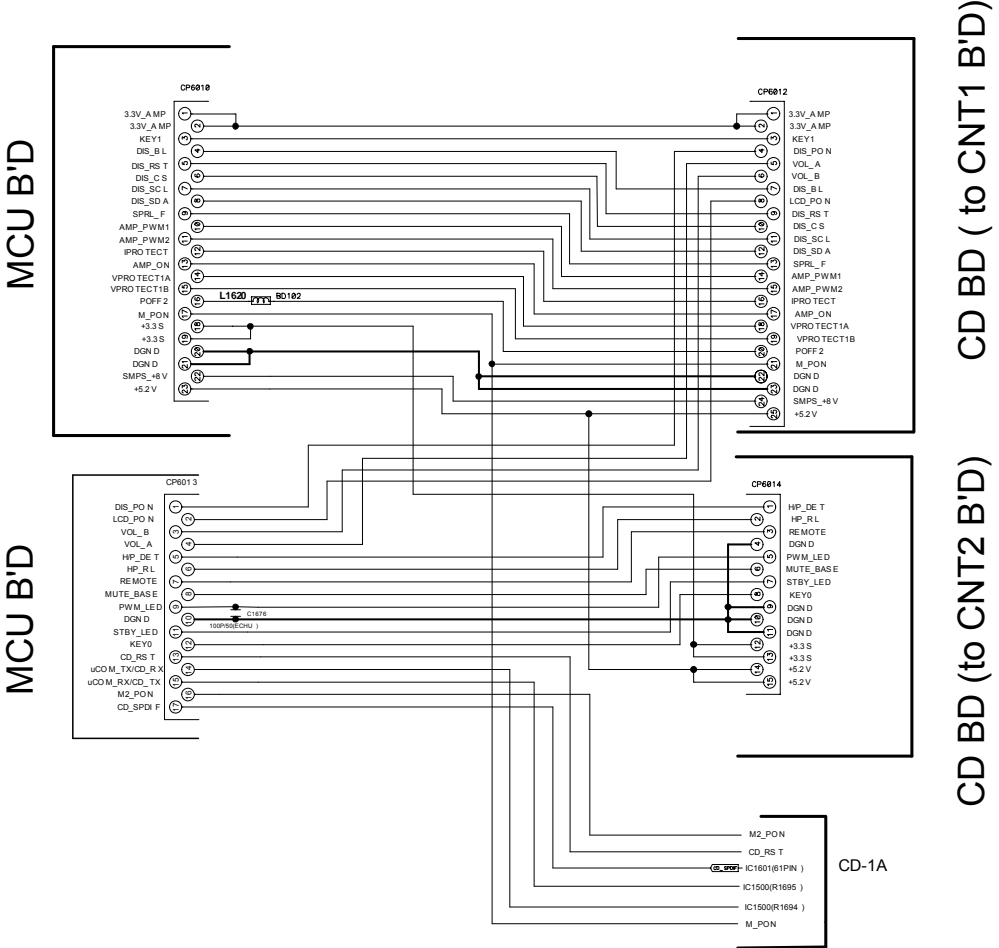
Model Name	Distination	LCD Display												
NC-50DAB	xx	5	0	D	A	B		x	x		2	8	1	0
NC-50	JJ	5	0					J	J		2	8	2	0

NC-50 CD Receiver BLOCK Diagram

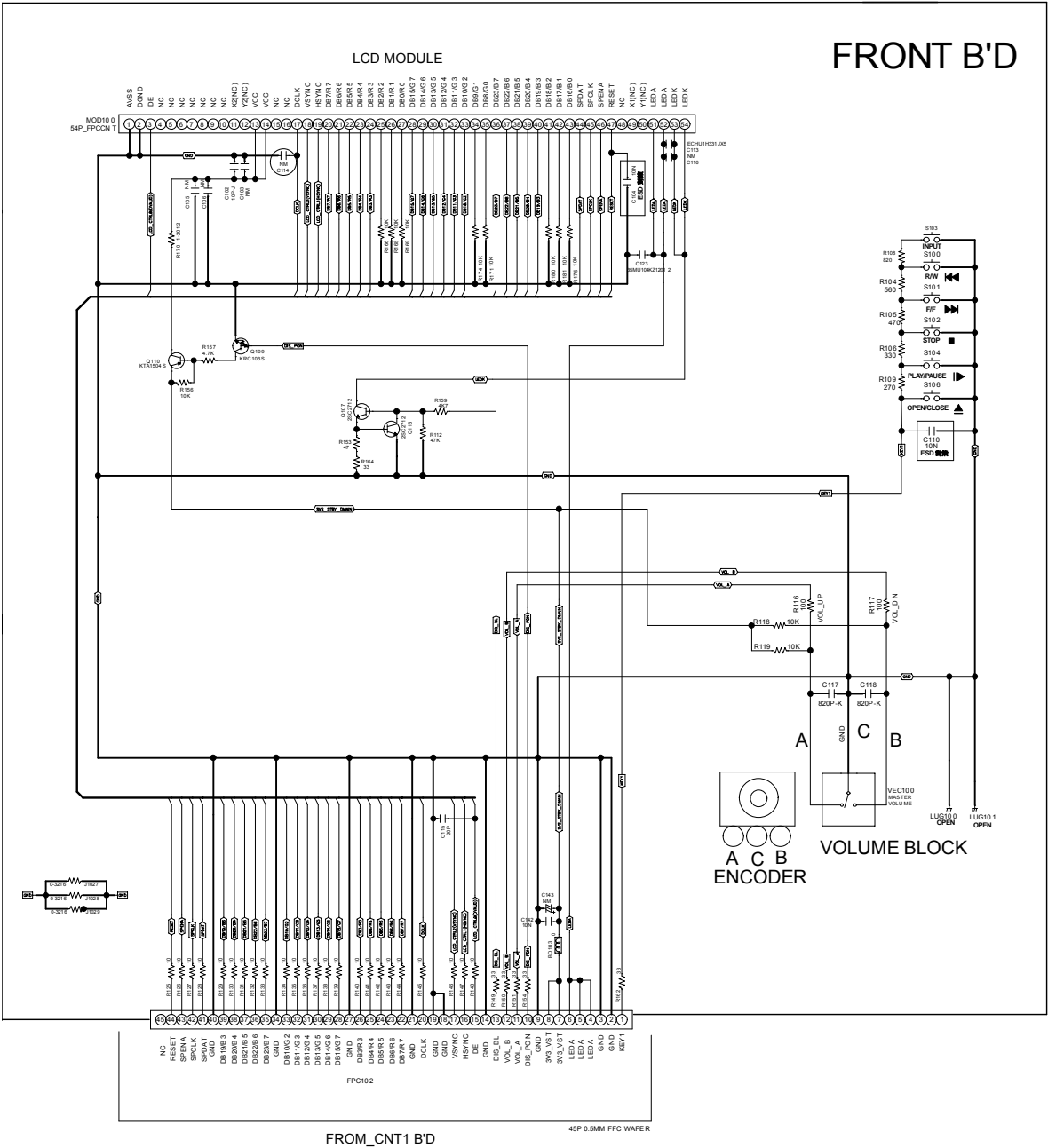




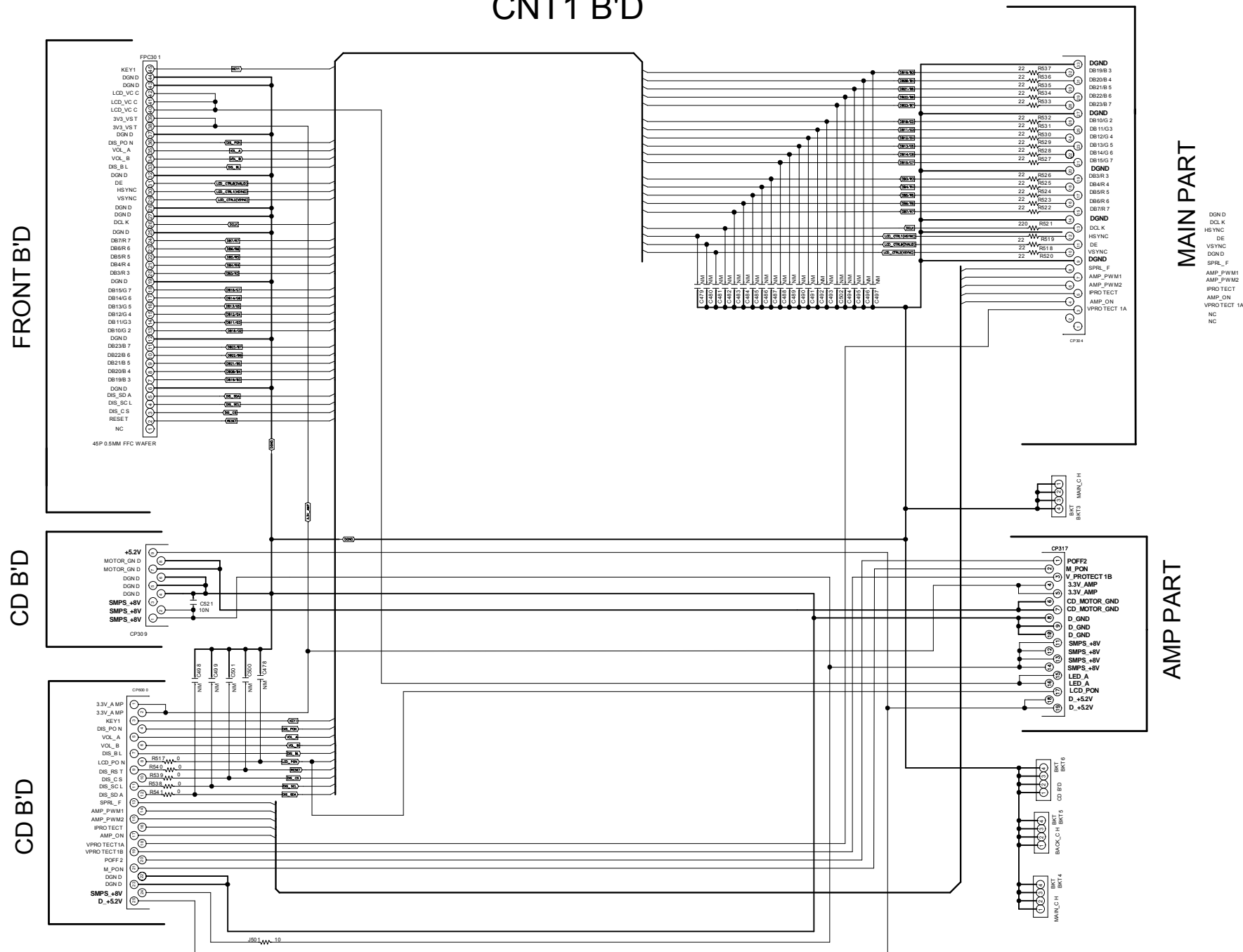
CD B'D



NC50 FRONT B/D

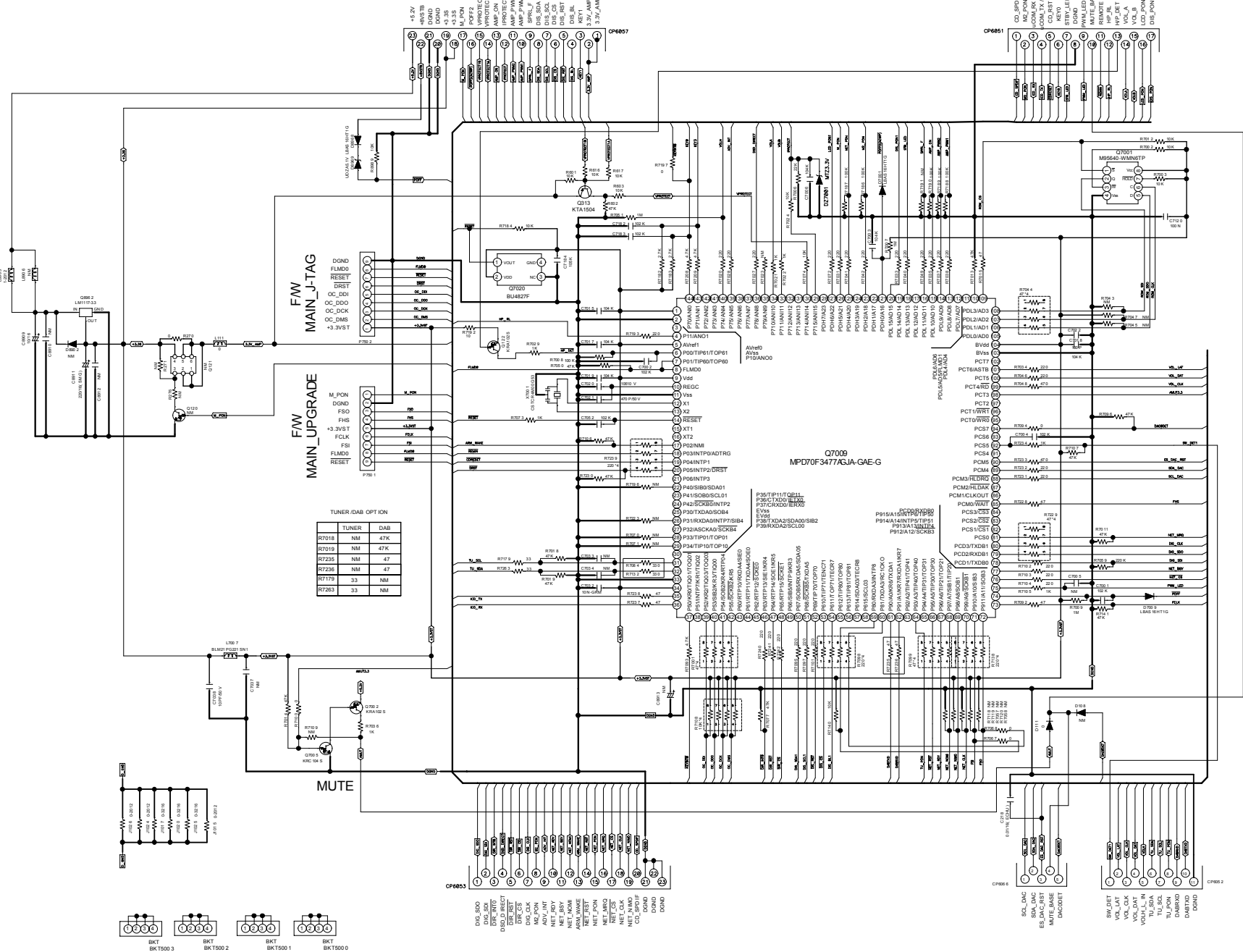


CNT1 B'D

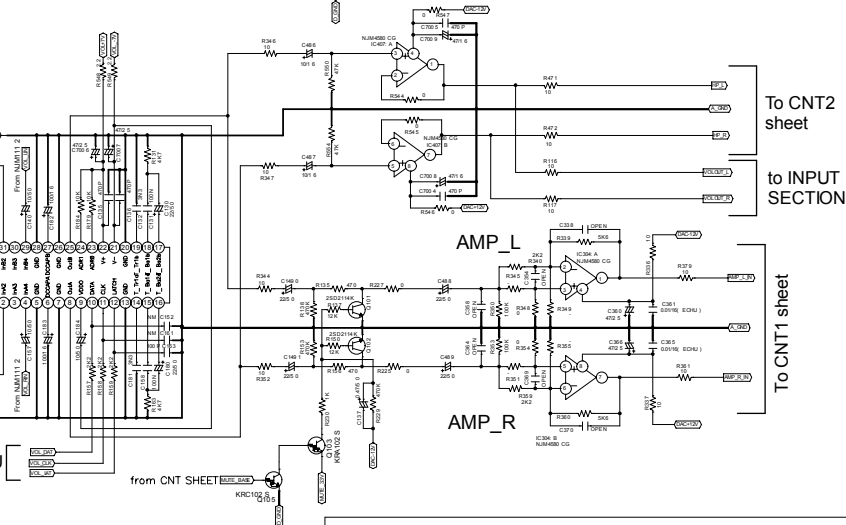
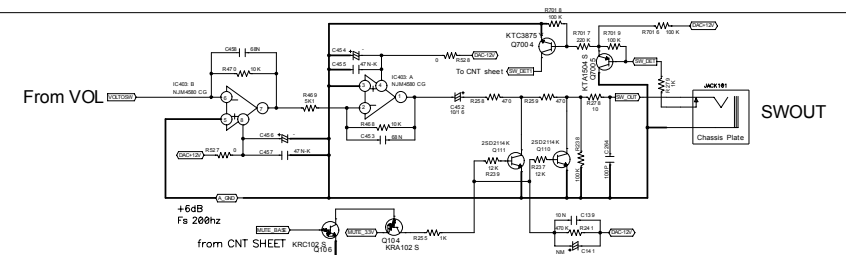
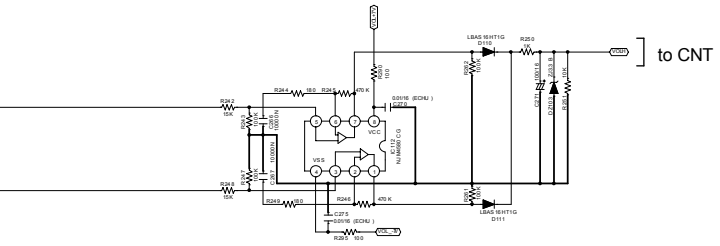


NC-50/50DAB

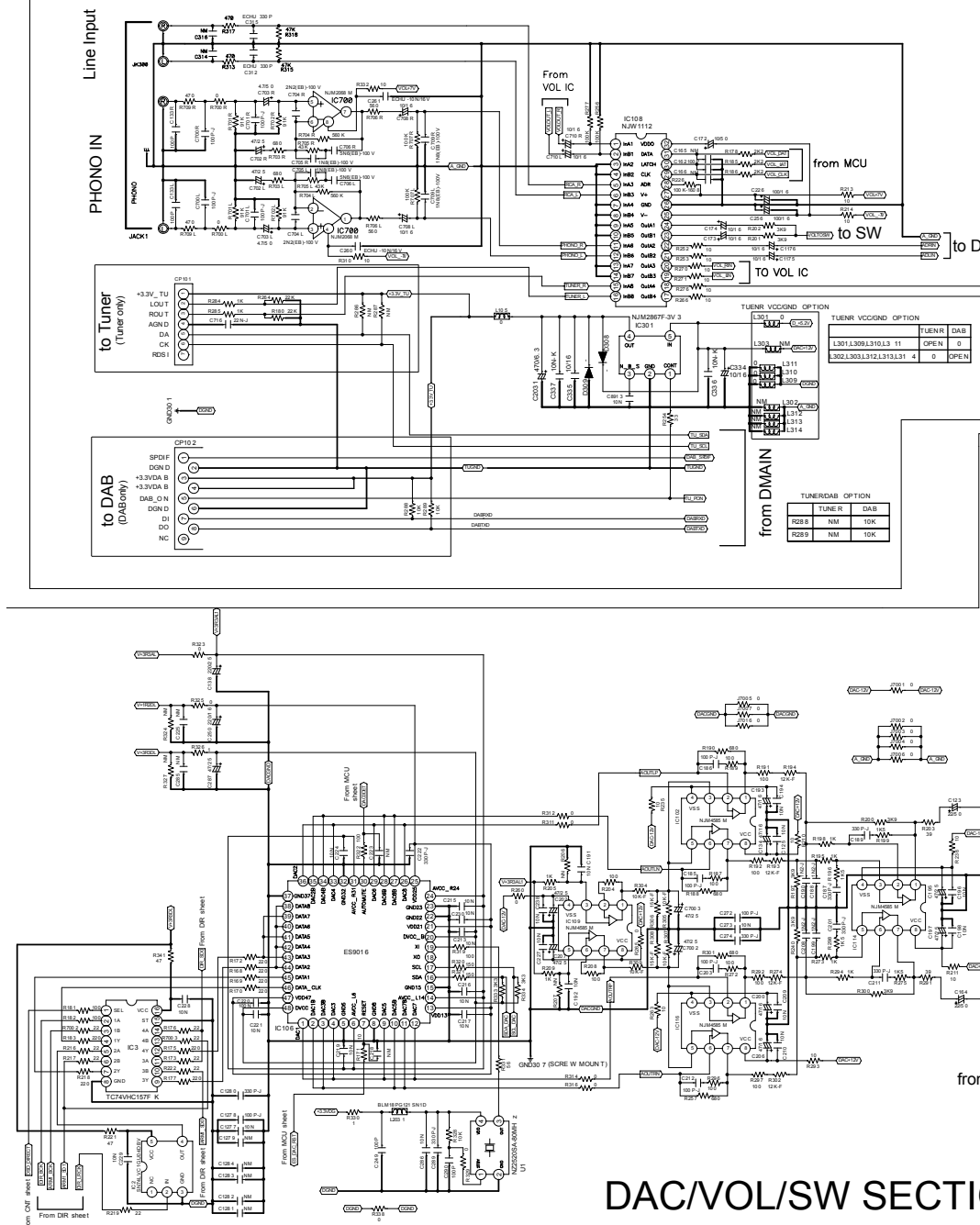
MCU SECTION



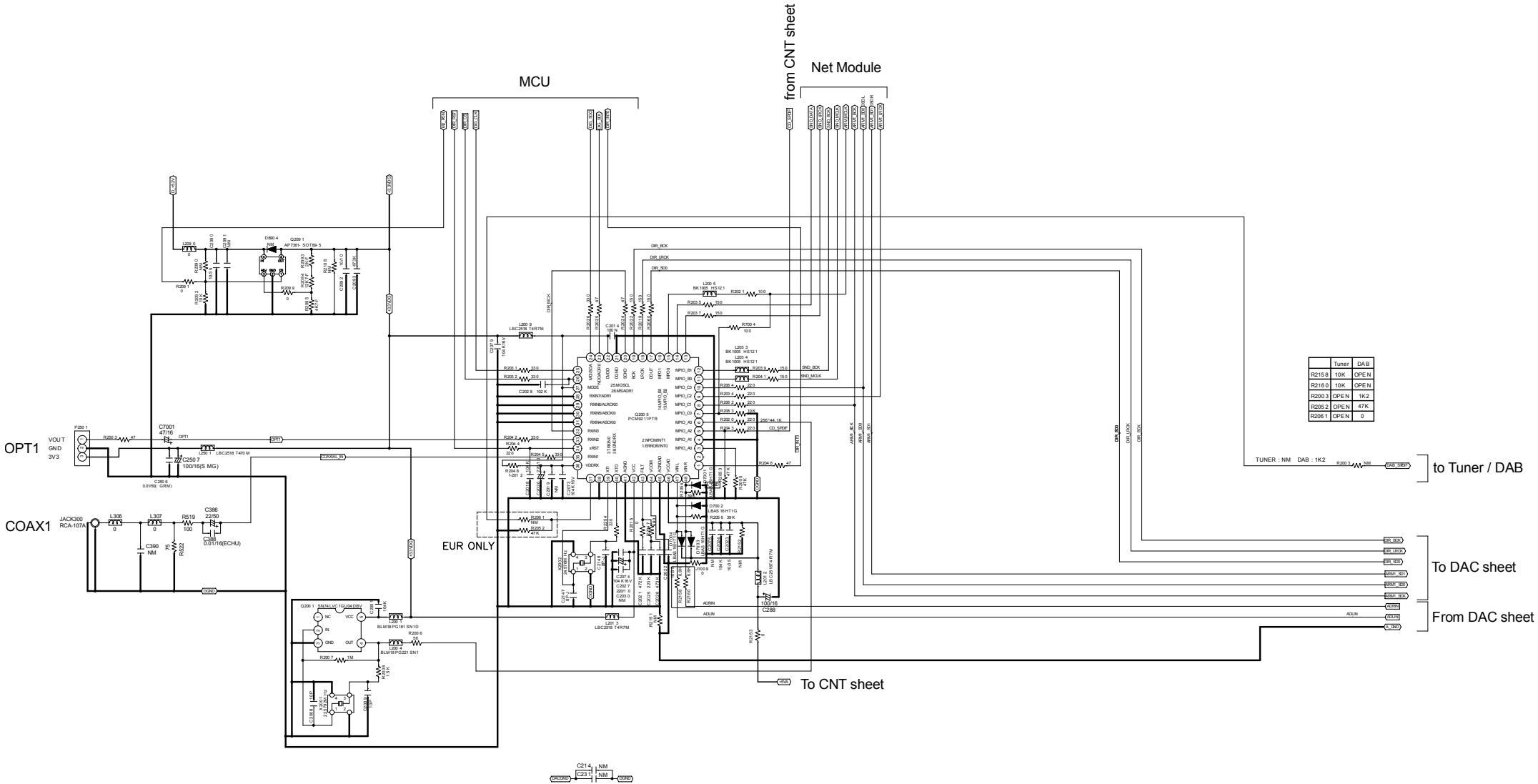
INPUT/AUDIO_DET SECTION



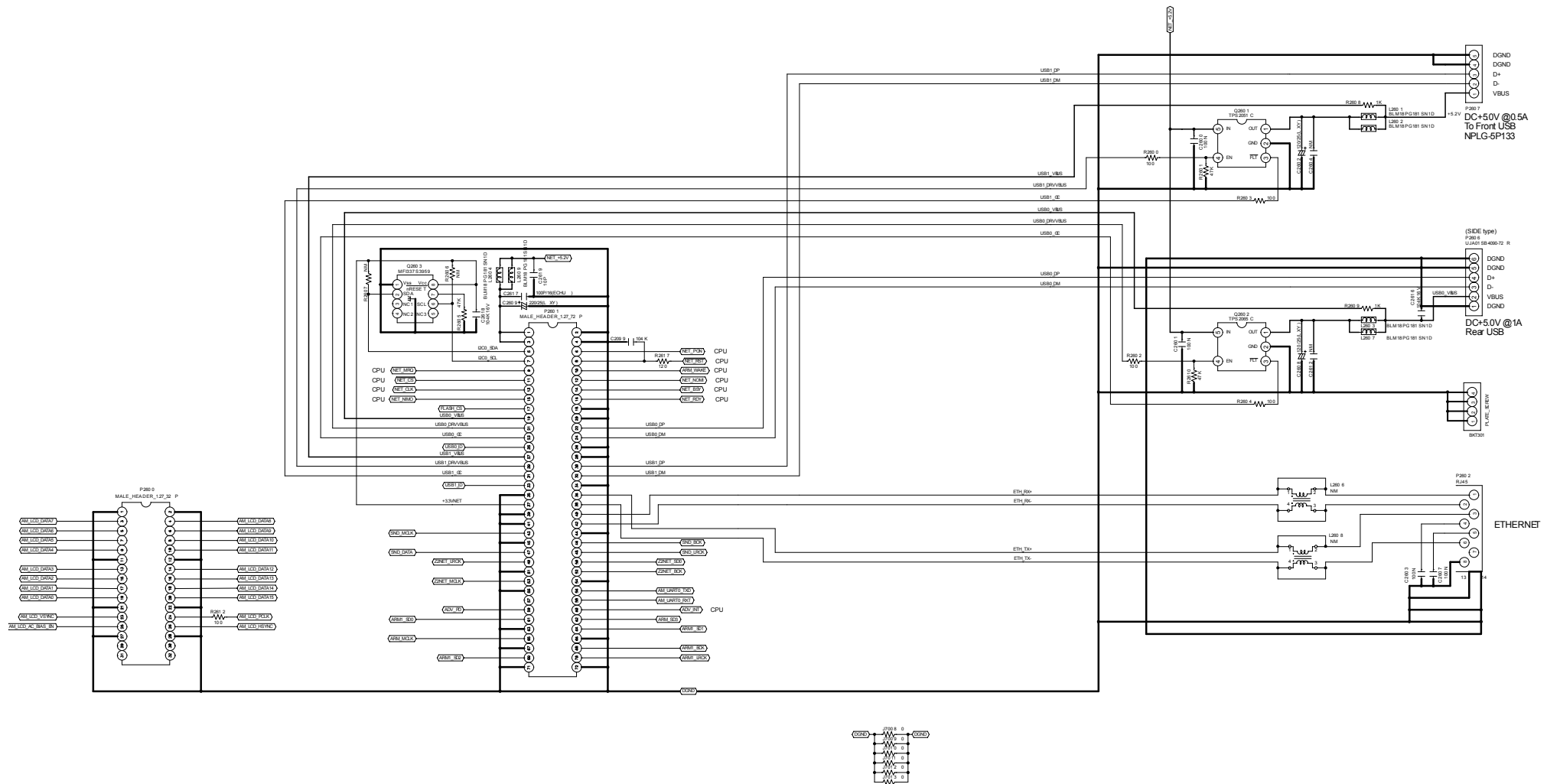
DAC/VOL/SW SECTION



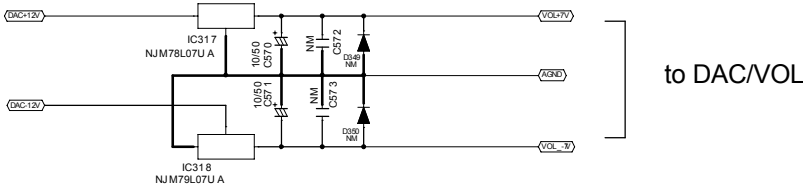
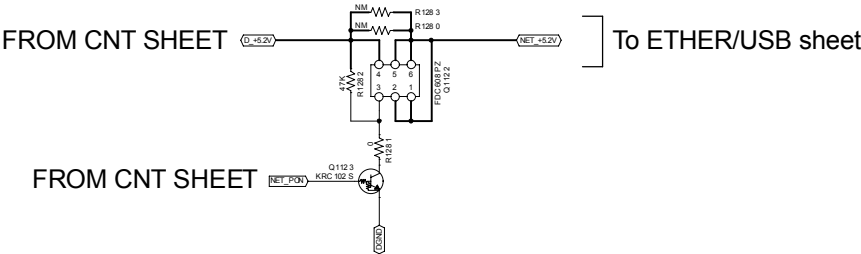
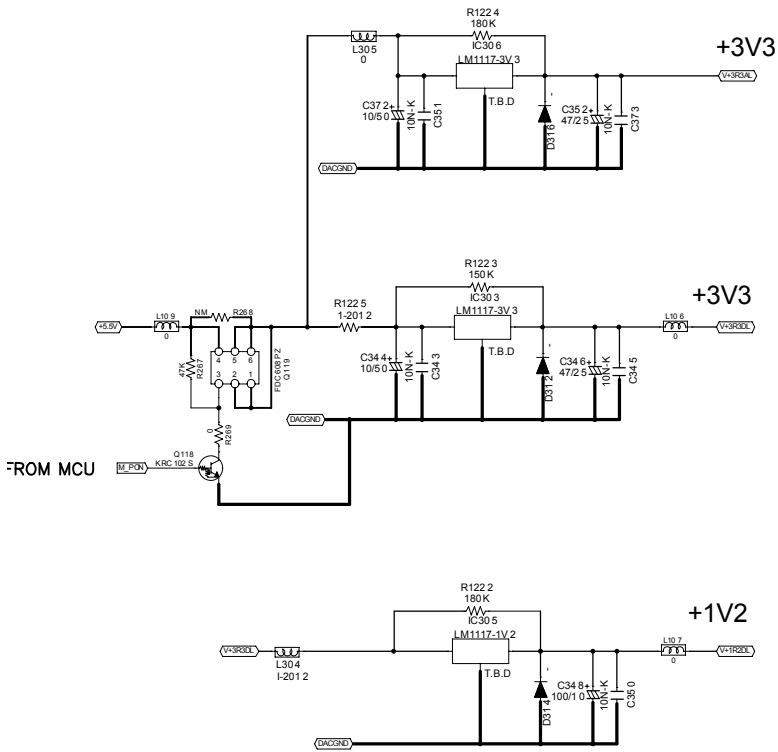
DIR/USB-B SECTION

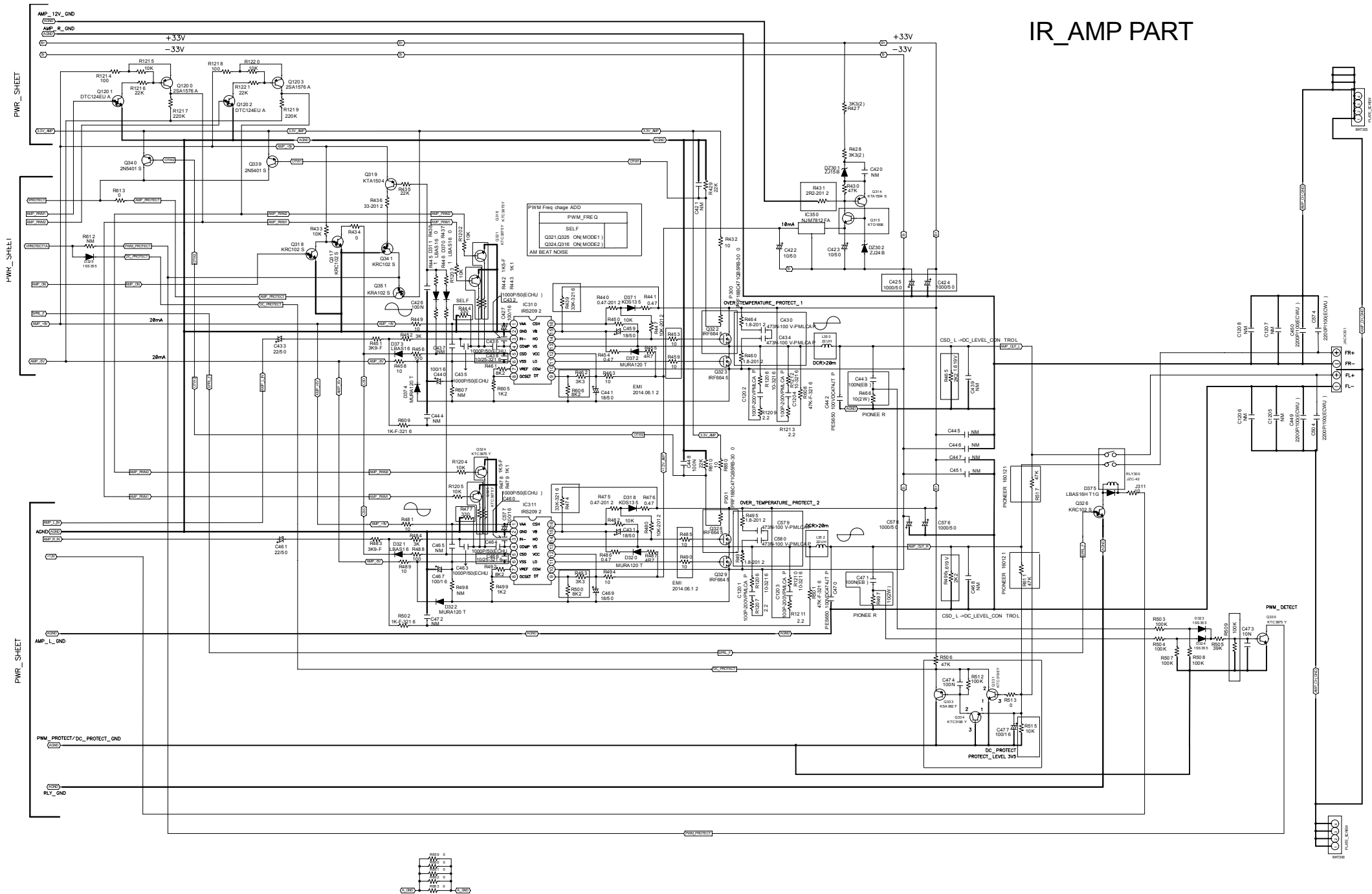


ETHER/USB CONNECTOR SECTION



POWER SECTION

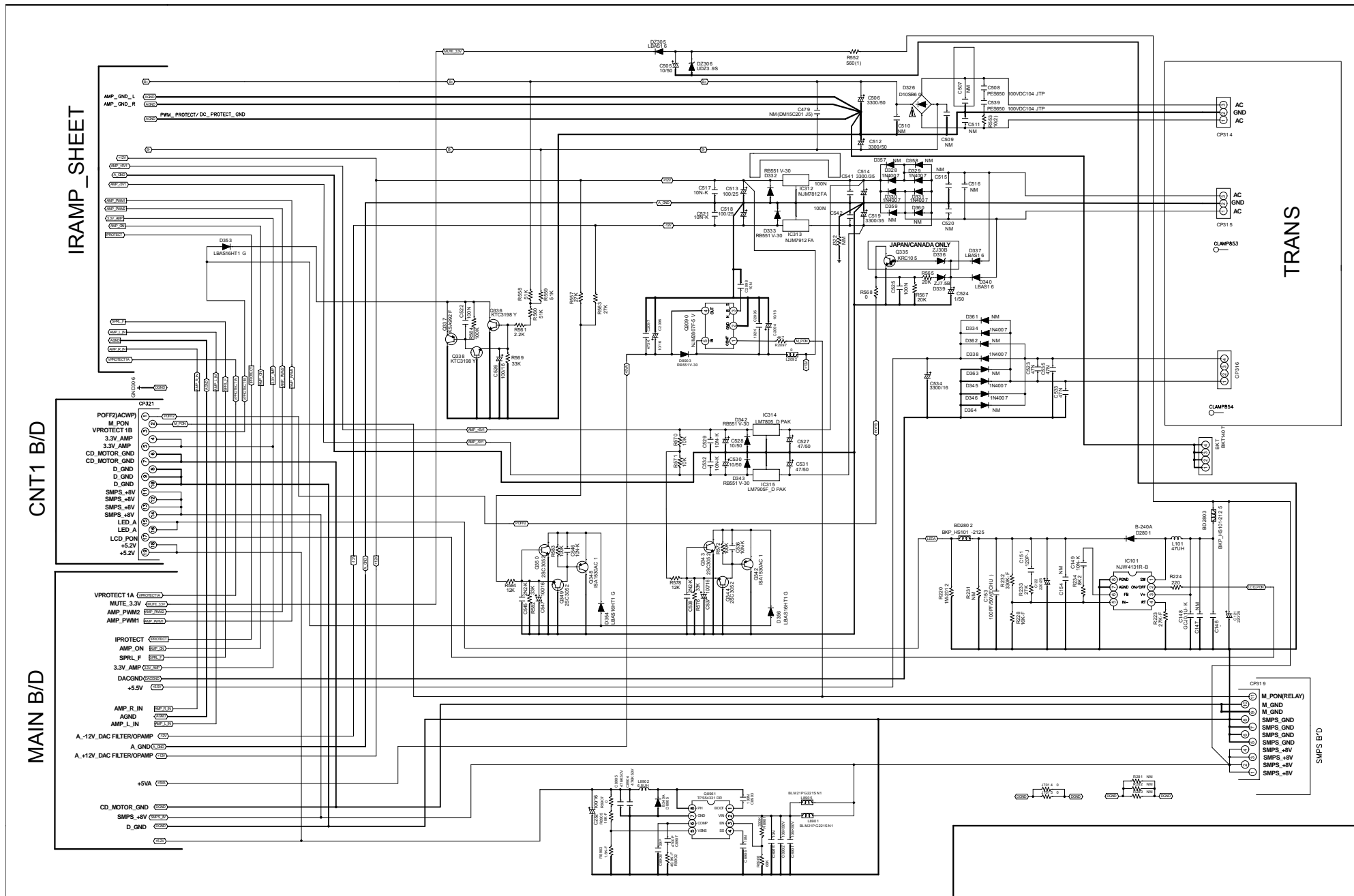




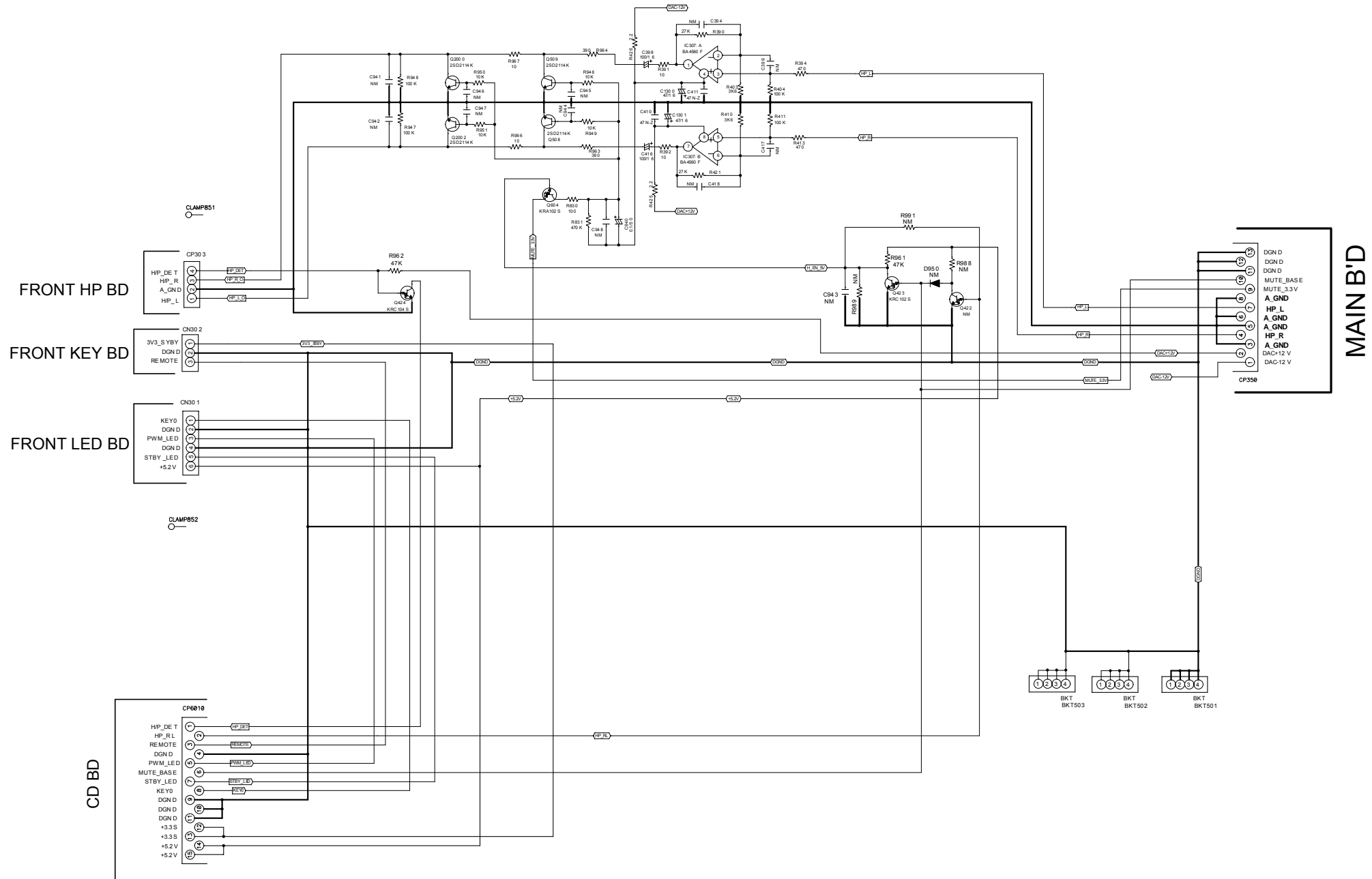
IR_AMP PART

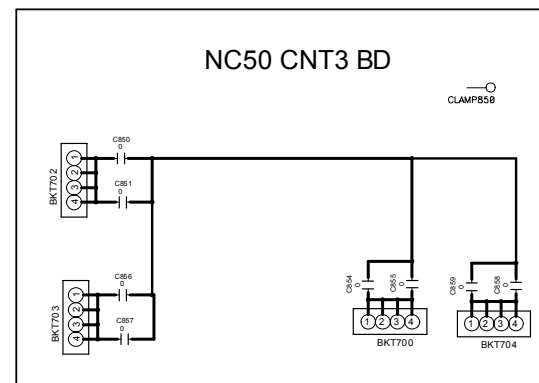
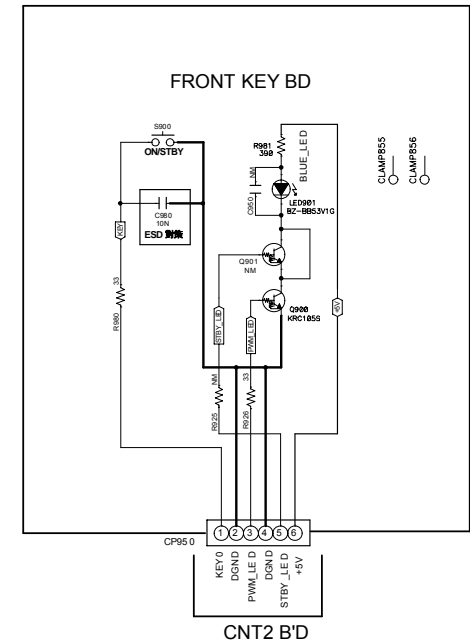
NC-50/50DAB

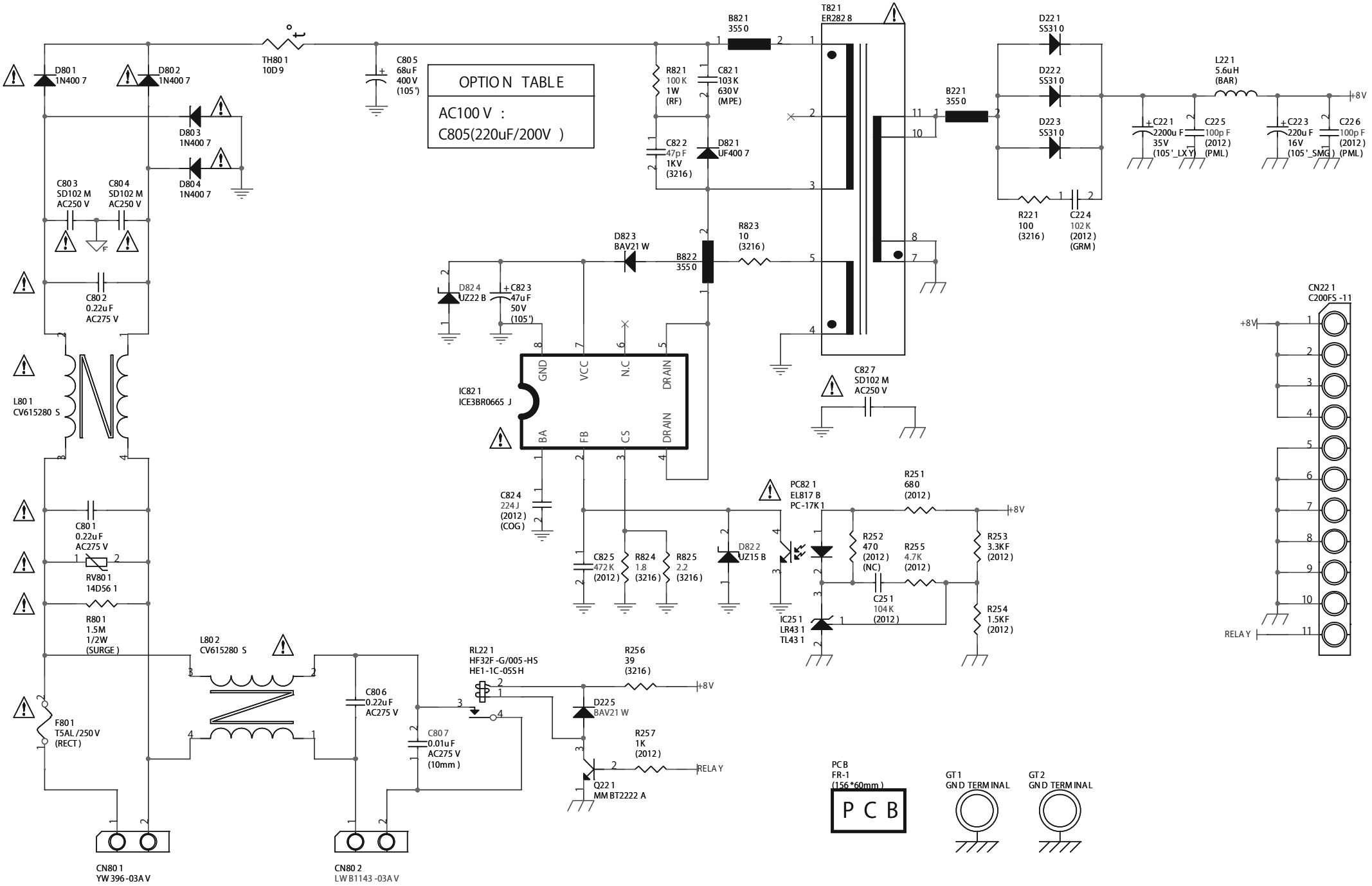
POWER



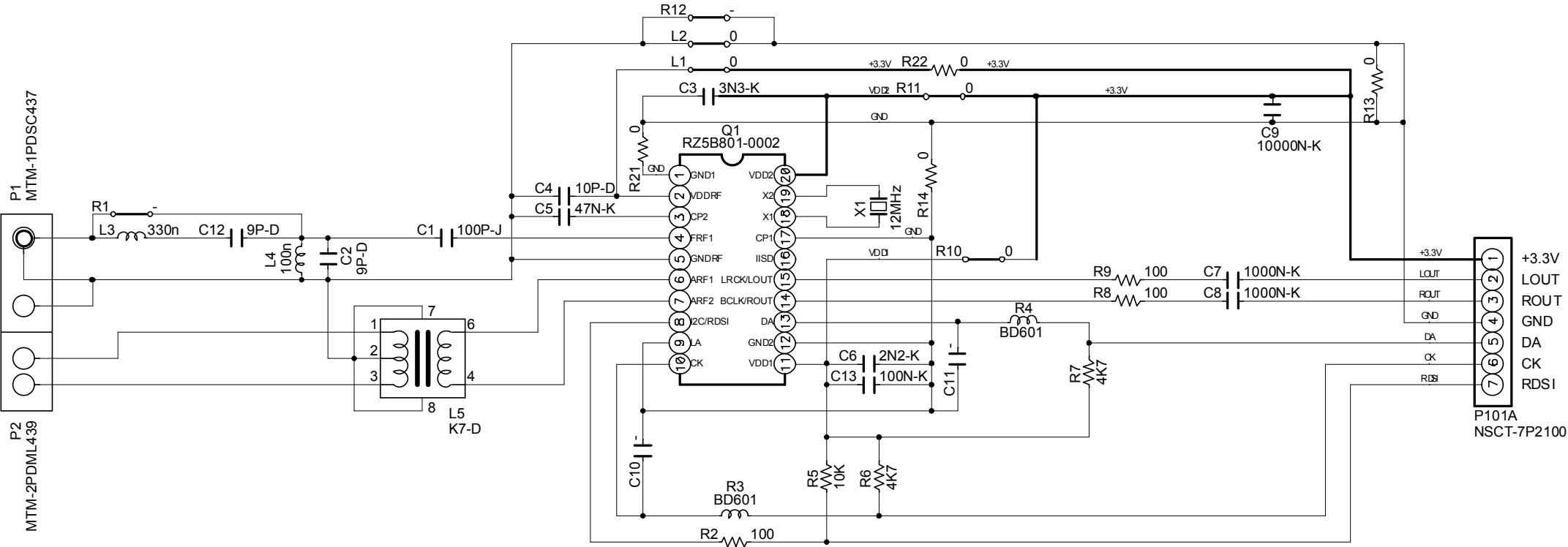
CNT2 B'D



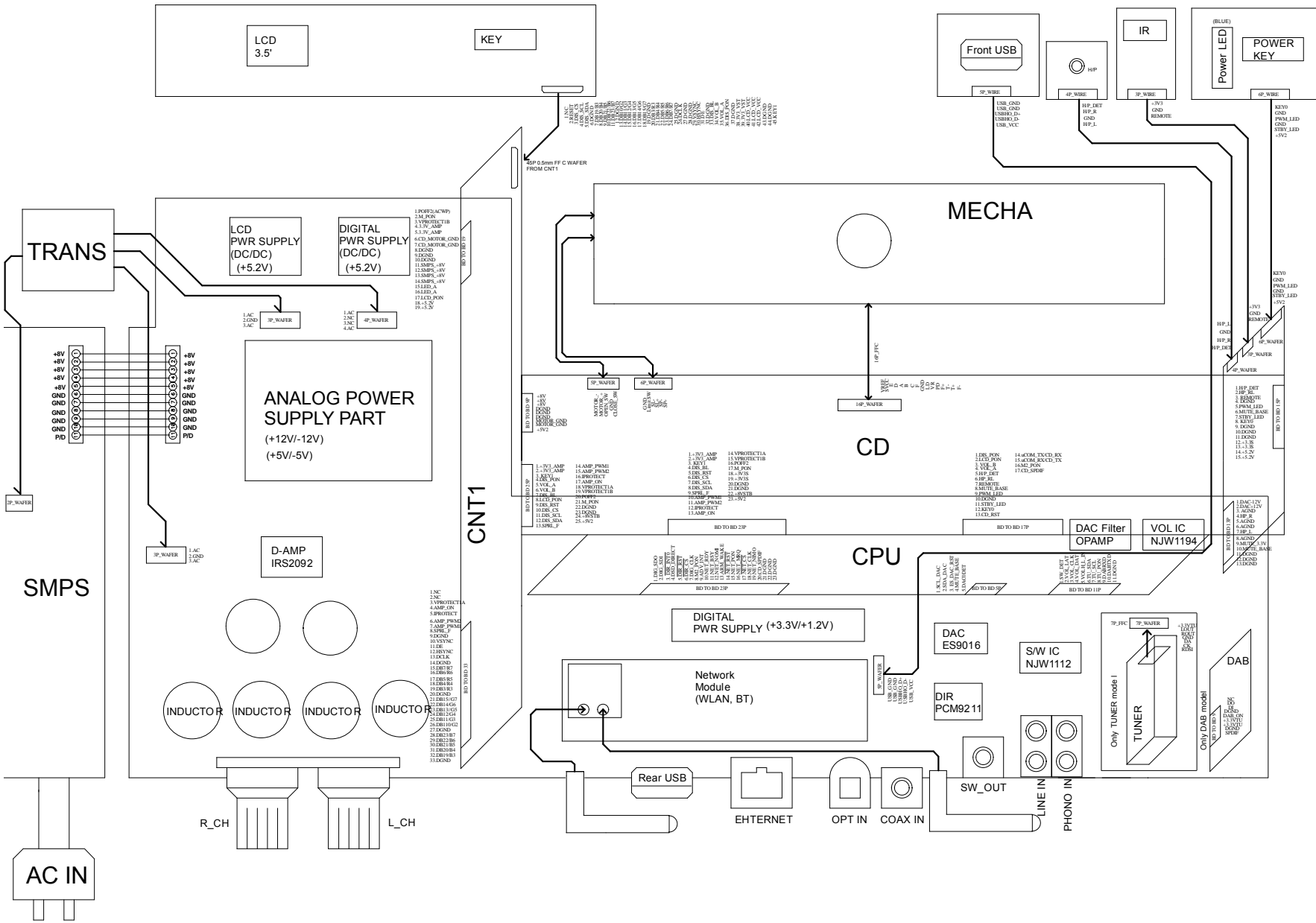




TUNER SECTION



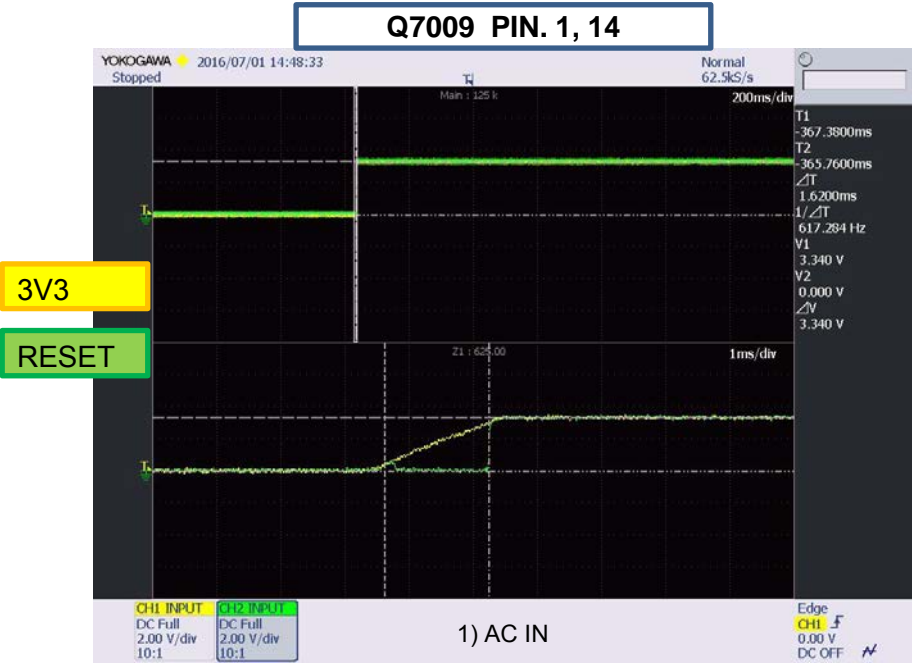
NC-50 CD Receiver WIRING BLOCK Diagram



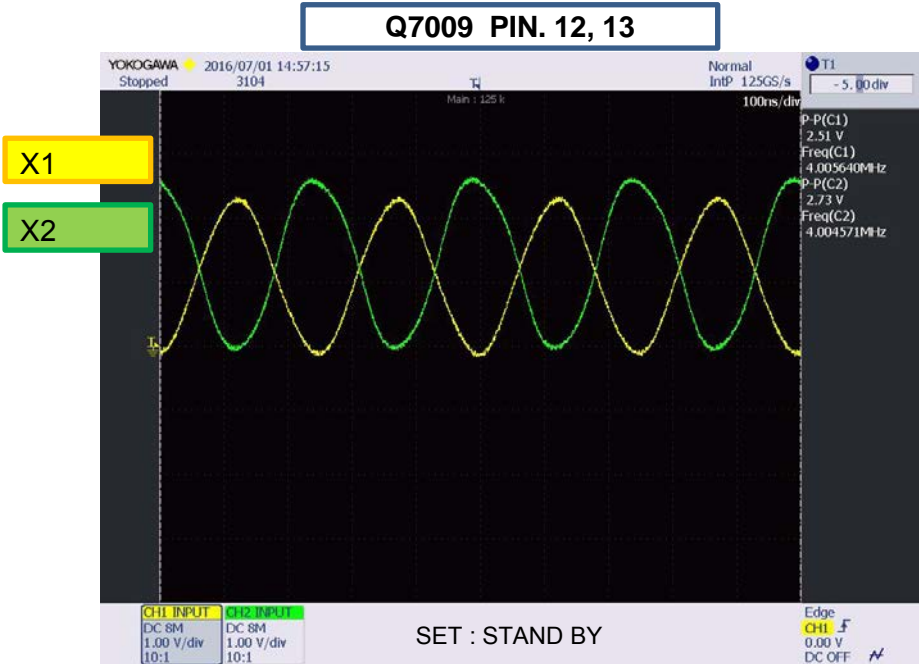
Waveform (1. MICOM (Q7009-UPD70F3477AGJA))

Schematic Diagram

1) RESET



2) 4M CLK

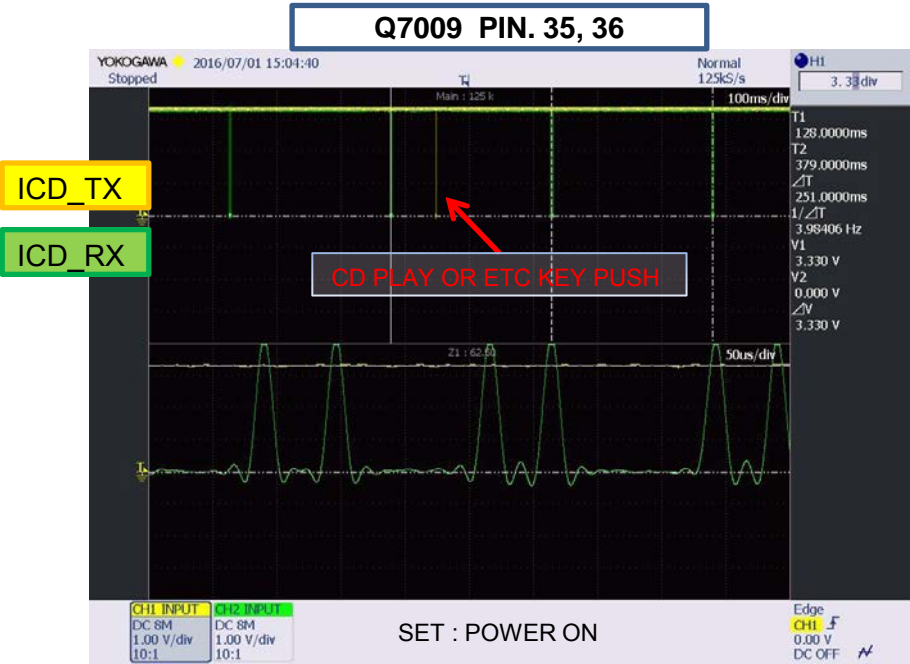


2) AC OUT



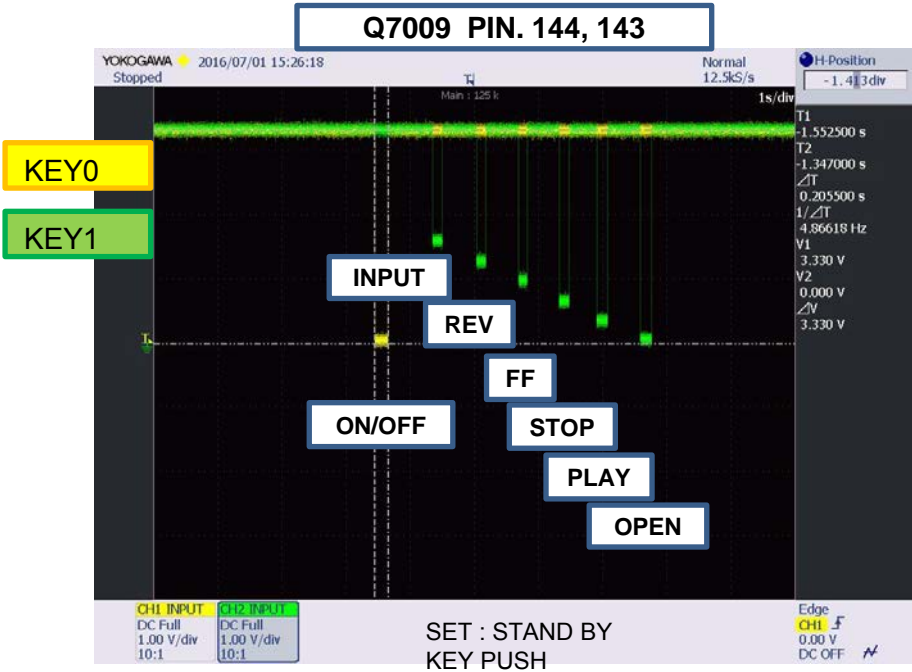
Waveform (1. MICOM (Q7009-UPD70F3477AGJA))

3) CD RX, TX



Schematic Diagram

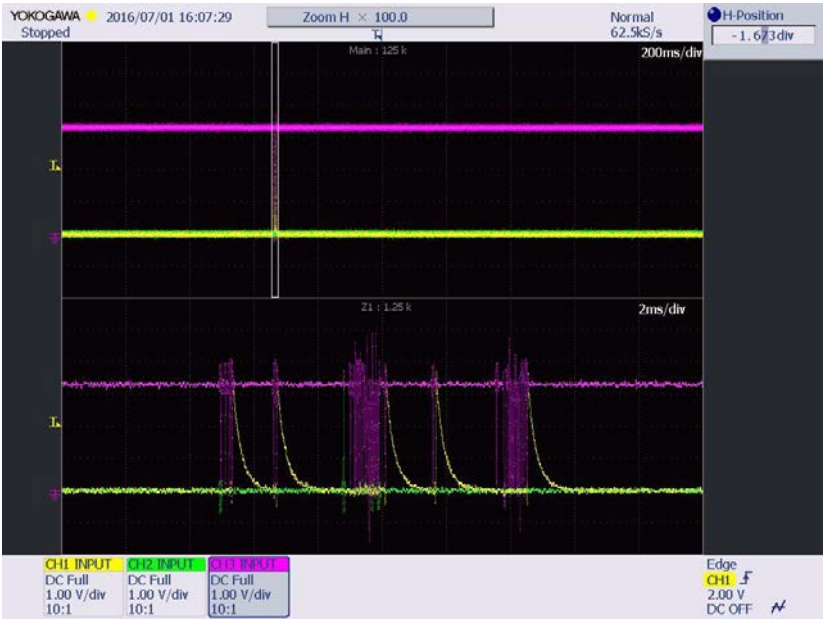
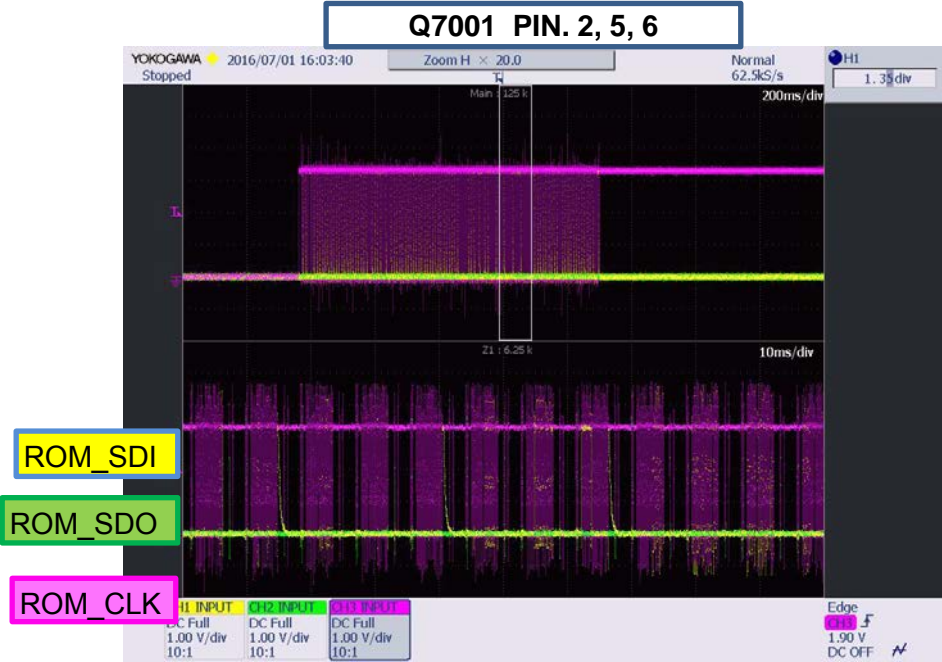
4) KEY 0, 1



Waveform (2.EEPROM (Q7001-M95640))

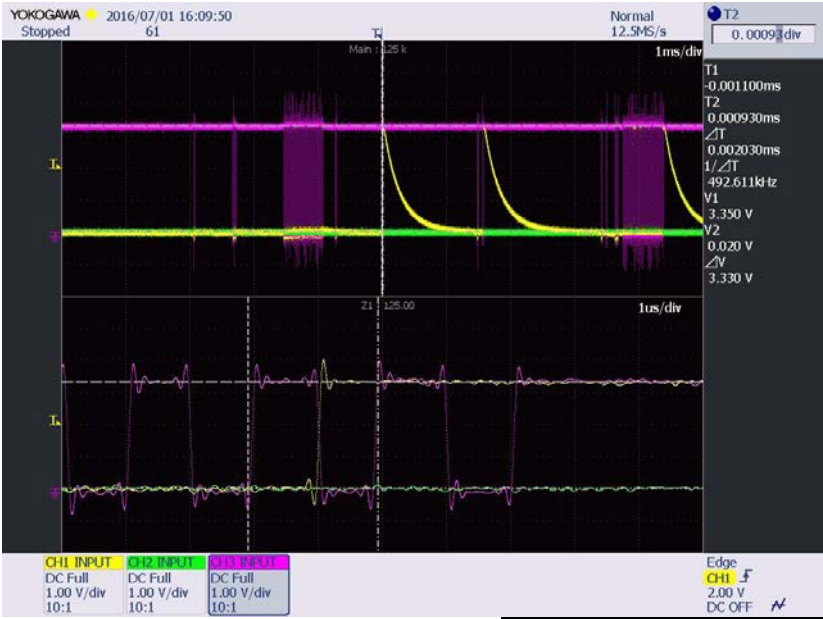
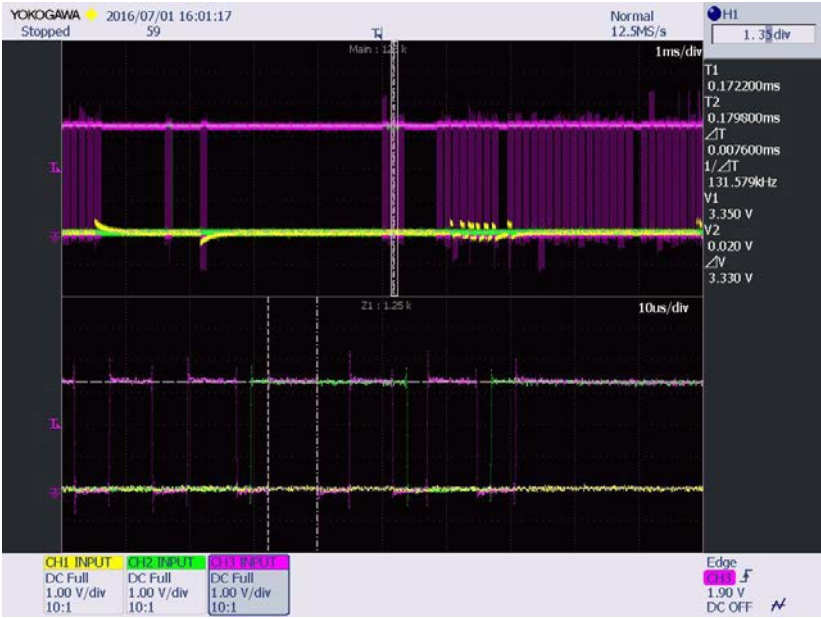
Schematic Diagram

3) CD RX, TX



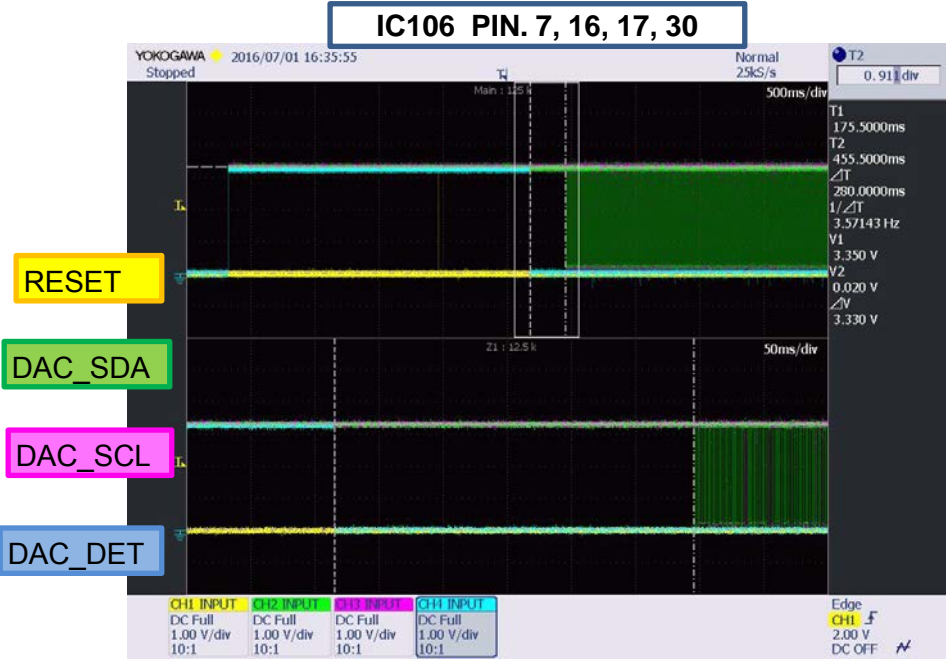
1) AC IN

2) POWER ON

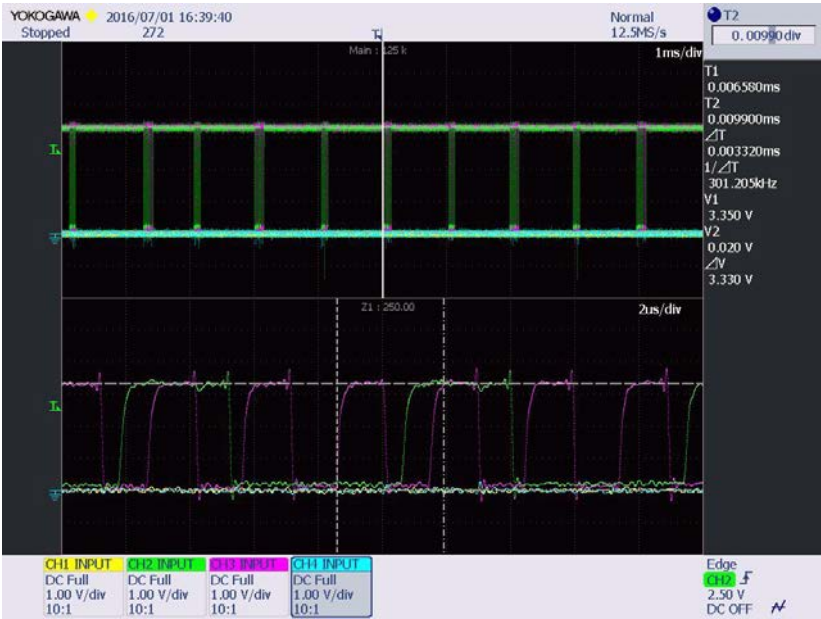


Waveform (3. DAC (IC106-ES9016))

1) DAC_ACTIVATE

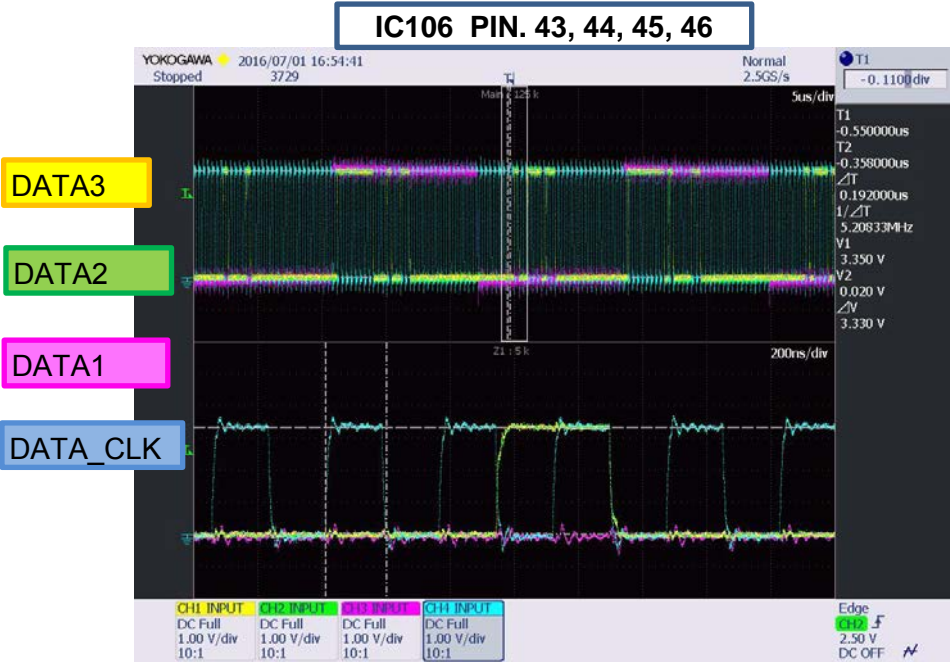


SET : STAND BY -> ON



Schematic Diagram

2) DATA



SET : ON + CD PLAY

Waveform (4. VOLUME IC (IC104 - NJW1194))

Schematic Diagram

1) DAC_ACTIVATE

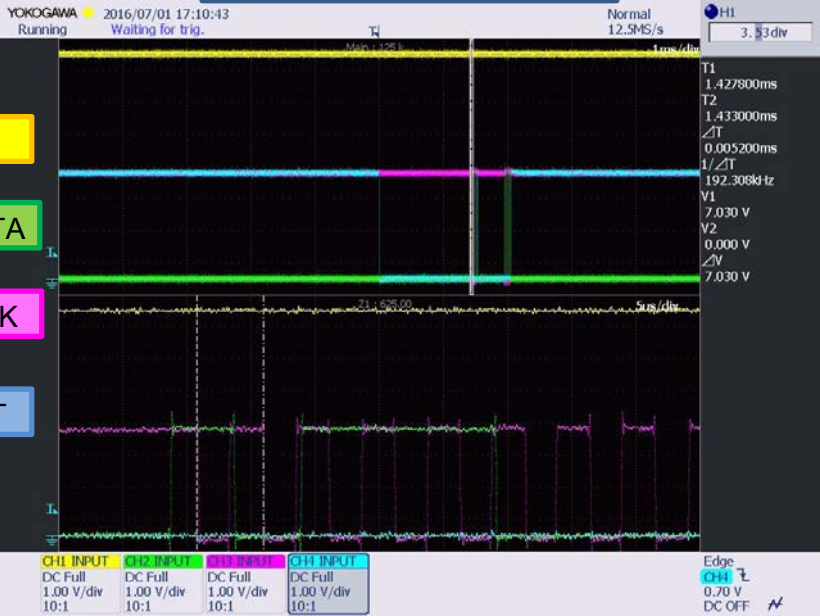
IC106 PIN. 22, 10, 11, 12

VCC

VOL_DATA

VOL_CLK

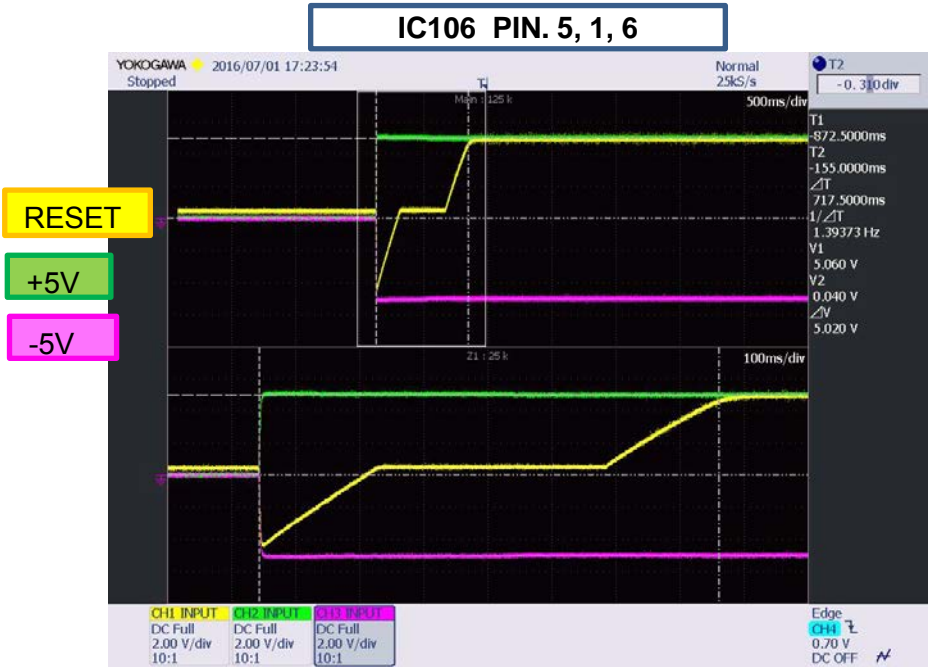
VOL_LAT



SET : ON -> VOLUME UP OR DOWN

Waveform (5. AMP (IC109 - TPS3251))

Schematic Diagram



SET : POWER ON

Waveform (6. DIR (Q2005 - PCM9211))

Schematic Diagram

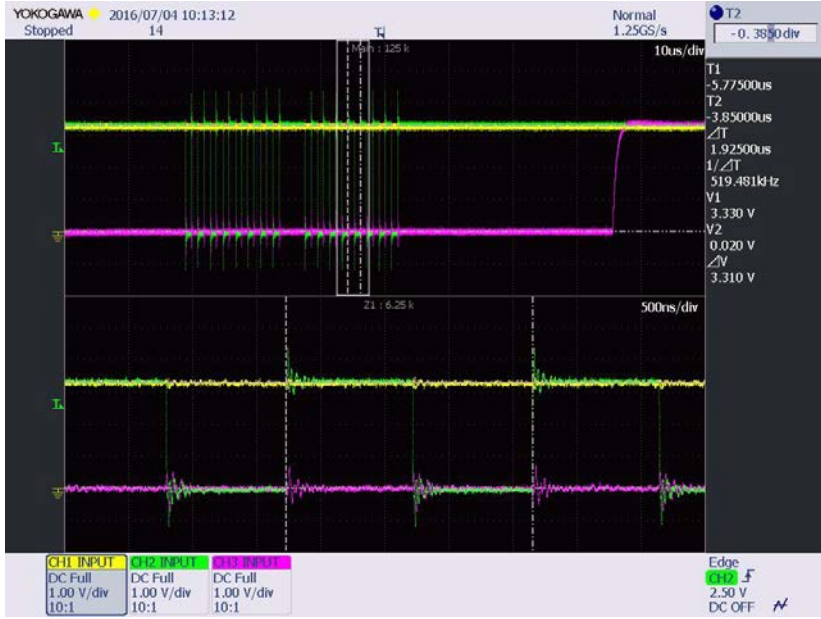
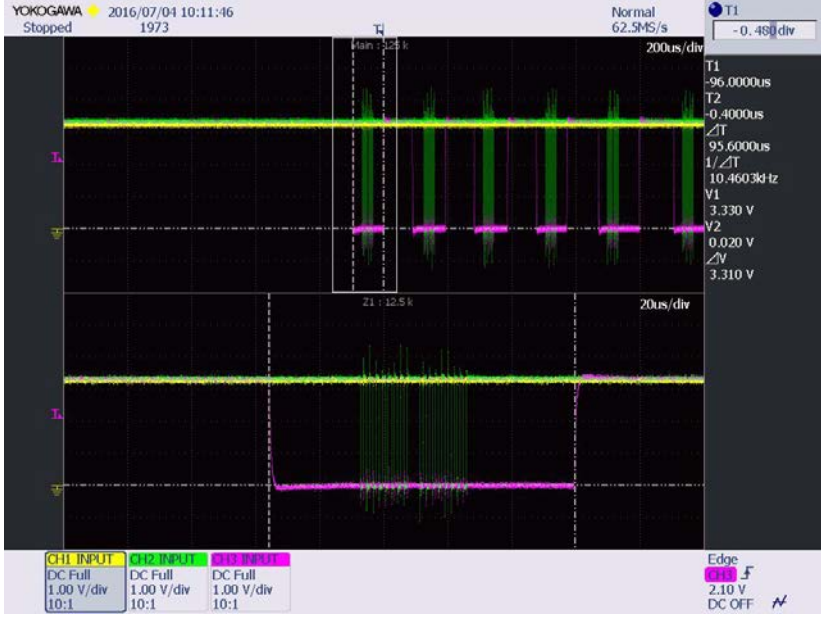
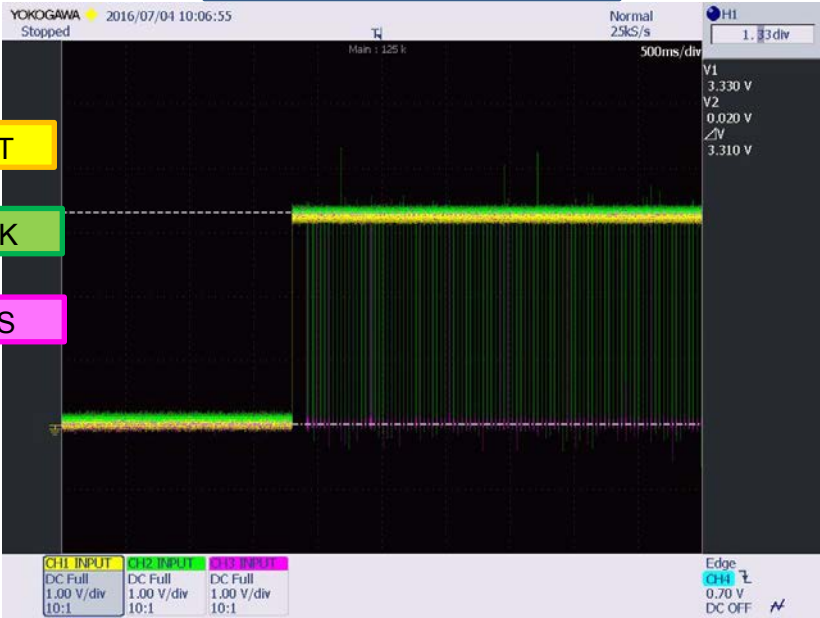
1) PCM9211 ACTIVATE

Q2005 PIN. 34, 25, 26

RESET

DIR_CLK

DIR_CS



Waveform (6. DIR (Q2005 - PCM9211))

Schematic Diagram

2) DATA

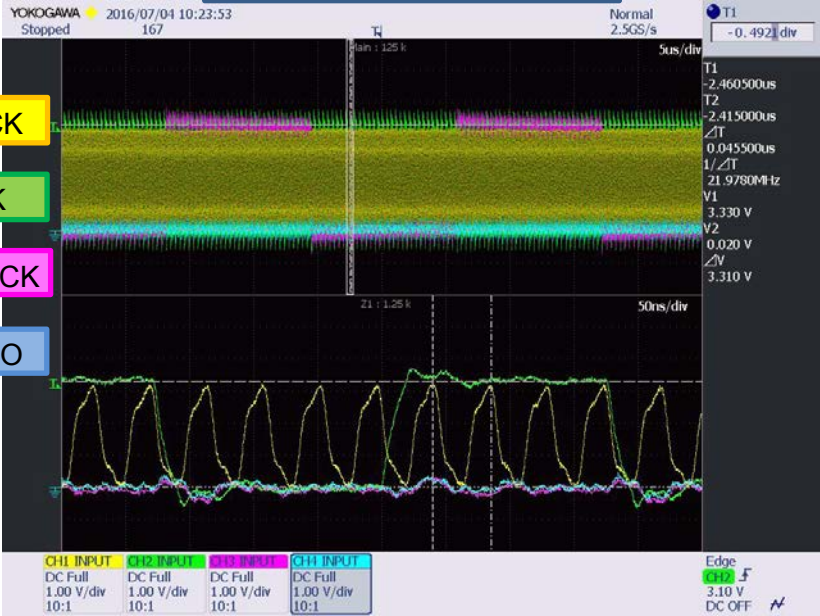
Q2005 PIN. 11, 12, 13, 14

DIR_MCK

DIR_BCK

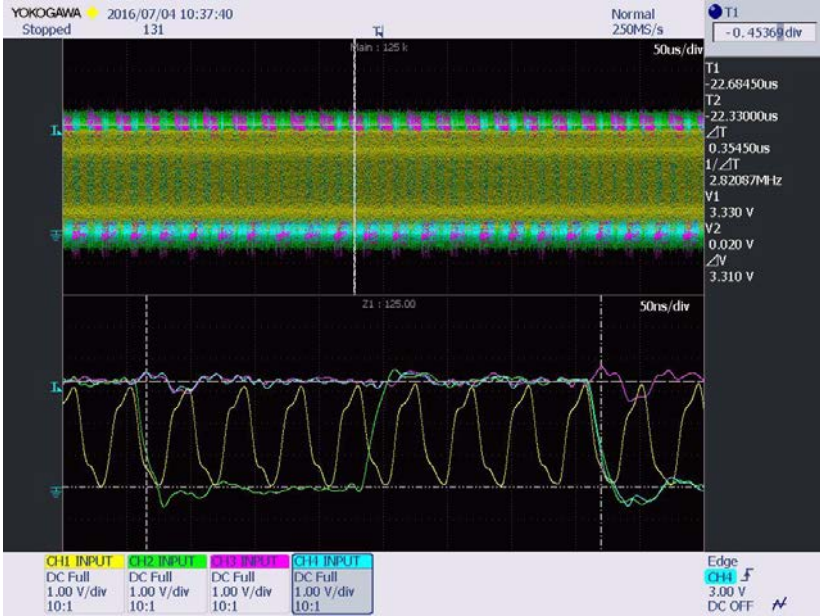
DIR_LRCK

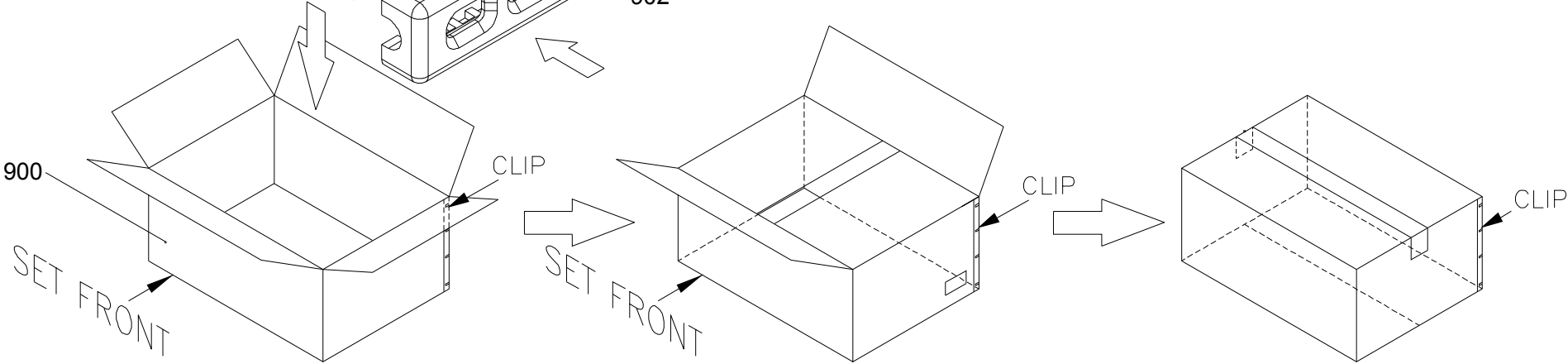
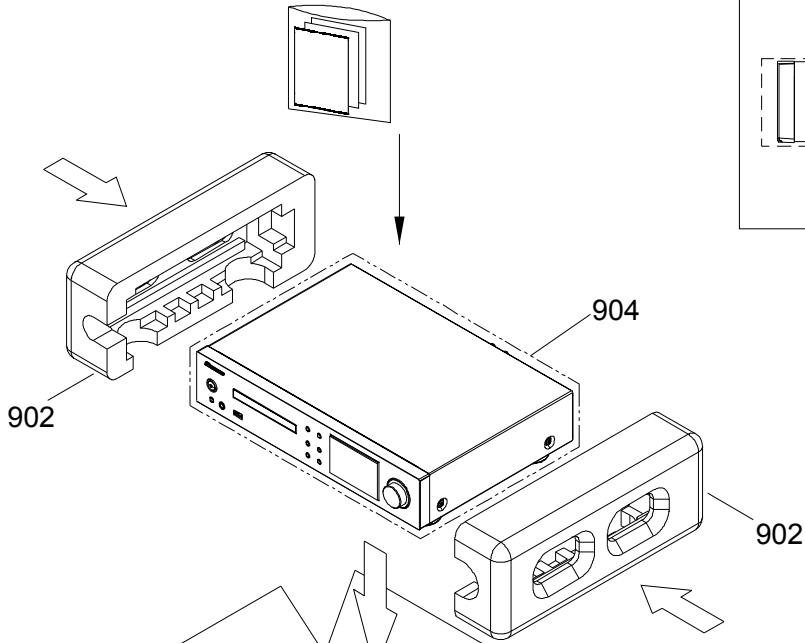
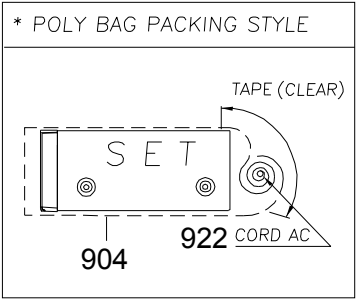
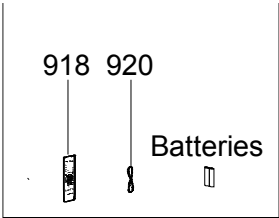
DIR_SDO

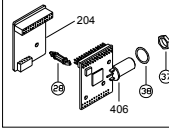
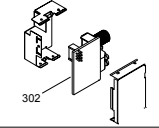
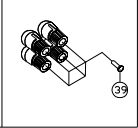


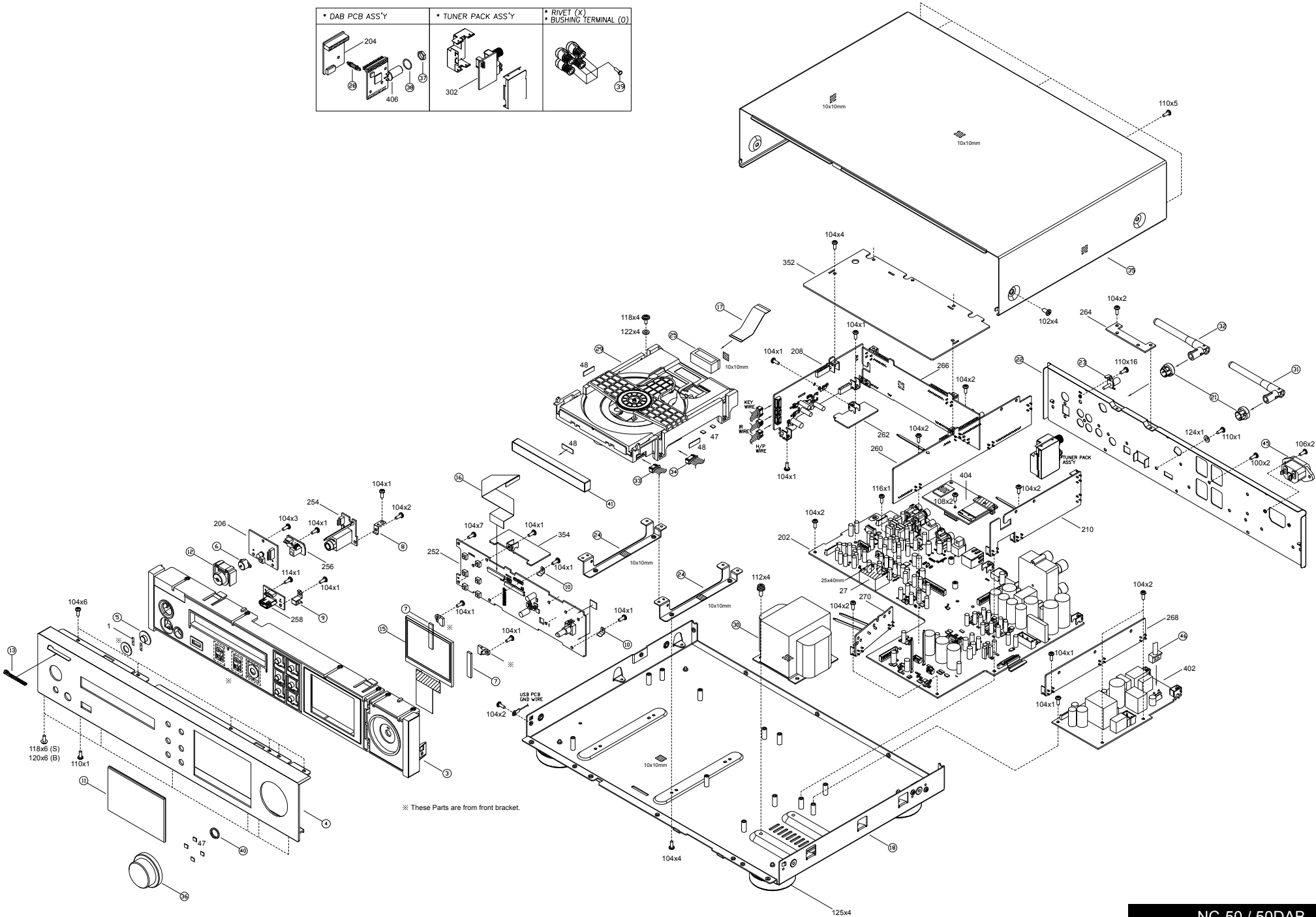
1) POWER ON

2) CD PLAY





DAB PCB ASS'Y	TUNER PACK ASS'Y	RIVET (X) BUSHING TERMINAL (O)
		



NC-50DAB (B) WGP

<Note>

1. Parts marked by "NSP" are generally unavailable because they are not in our Master Spare Parts List.
2. The ! mark found on some component parts indicates the importance of the safety factor of the part.
- Therefore, when replacing, be sure to use parts of identical designation.

(B) : Black color model
WGP : 220-230 V, Europe

: NSP

REF. NO.	PART NAME	DESCRIPTION	Q'TY	PART NO. (SN)	REMARKS
[Cabinet, Chassis, Screws, Nuts]					
1	TAPE	NITTO 500	0.15	A710000140000S	
3	PANEL	NC-50DAB(B)WGP(PIONEER) ABS BK/INNER	1	3060216681000S	
4	PANEL	NC-50DAB(B)WGP AL6063-T5 CHINA/FRONT(AL)	1	3067216678000S	
5	LENS	A6WYXCN5(PIONEER) ACRYL(PMMA) BLACK A4/REMOCON	1	3710210683000S	
6	LENS	SX-P01 ABS CLEAR/STANDBY	1	3710211321000S	
7	GASKET	N-70A/JXEV GASKET 35X6*2t/ LCD	2	4400210959100S	
8	PLATE	SR5006U1B(-----) CUS t0.2(CMC1A425) A4/USB	1	4470212206000S	
9	PLATE	SR5006U1B(-----) CUS t0.2(CMC1A426) A4/RCA	1	4470212216000S	
10	PLATE	C5210(CuS) t0.3/EARTH	2	4470212706000S	
11	WINDOW	N-50A/JXEV BG=BK only 93.5*63.2*3.0t A4/DISPLAY	1	5077213713000S	
12	BUTTON	SX-P01 ABS BK HIGH GLOSSY/STANDBY	1	5090215291000S	
13	BADGE	VAM1158-A AL SILVER / PIONEER	1	5630210918000S	
18	CHASSIS ASSY	NC-50DAB(B)WGP(PIONEER) BLACK MODEL /MAIN	1	3208215546000V	
21	BUSHING	V5X-830-K/CUXEVSM(PIONEER)ABS PA757 BK A4/WIFI ANT	2	2410210171000S	
22	CHASSIS	NC-50DAB(B)WGP SECC 0.8t / BACK	1	3207215536000V	
23	TERMINAL	S4011062LN	1	3790000090000S	
24	BRACKET	XHM82K/SYXE8(PIONEER) SECC T1/MECHA	2	4010216116000S	
25	CLAMP	NC-50DAB(S)WGP(PIONEER) CABLE CLAMP FCA-5(NYLON6)	1	4330210313000S	
27	CUSHION	SA-SWR45/JXE(PIONEER) EVA 14T/NFC(REV)	1	4050215785000S	
28	SUPPORTER	MCR611N1GN(-----) SUPPORTER LCF-11/ H:11(KANGYANG	1	4070212461000S	
29	MECHA	CD MECHA EM101RNK	1	8030000010090S	
35	CABINET ASSY	NC-50DAB(B)WGP(PIONEER) /TOP COVER(BK)+SHEET ASSY	1	3008212196000V	
36	KNOB ASSY	SX-P01 ABS+AL BK/VOLUME	1	5088212778000S	
37	NUT	FF6J/MYXCN5(PIONEER) (3/8-32UNEF-2B)*(2.7t)	1	1520210335000S	
38	WASHER	FF6J/MYXCN5(PIONEER) STS IN ϕ 9.6* OUT ϕ 14.0*t0.5	1	1530210152000S	
39	BUSHING	NYLON(BK)/TERMINAL	4	2410040353010S	
40	SPRING	VSAS1/JJXCN(PIONEER) SWP PI1.2 IN PI7.7 A4/KNOB	1	3720210276000S	
41	COVER	X-HM82K/SYXEV8 BLACK6365PAM ABS BK SP+H/STAMP/TRAY	1	4317216101000S	
100	SCREW,TAP TITE	SOLO SOUNDBAR/US(ARCAM) +2S 3*10 B-TYPE BK/BH	2	B020030103B10SV	
102	SCREW,TAP TITE	XHM82K/SYXEV8(PIONEER) +3S 4*6 C-TYPE BK/BH	4	B020940063B10SV	
104	SCREW,TAP TITE	KRA4030(K)(-----) +2S 3*8 B-TYPE ZNW/BH	61	B020030081B10SV	
106	SCREW,TAP TITE	AGV1200(TEAC) +2S 3*8 B-TYPE BK/FH	2	B020030083F10SV	
108	SCREW,TAP TITE	XHM82K/SYXEV8(PIONEER) +3S 3*6 ZNW/BH	2	B020930061B10SV	
110	SCREW,TAP TITE	KRA4030(K)(-----) +2S 3*8 B-TYPE BK/BH	29	B020030083B10SV	
112	SCREW,TAP TITE ASSY	AVR1910BKE3(-----) +3S 4*10 P+S-WASHER(ROUND)BK/BH	4	B028940101B11SV	
118	SCREW	+2S 3x8 WASHER P17 ZNW/WPH	4	1500210956000SV	
120	SCREW	+2S 3x8 WASHER P17 BK/WPH	4	1500210966000SV	
122	WASHER	ϕ 6.5* ϕ 3.5*t0.5 PC+double tape	4	1530210492000S	
124	WASHER	N-50A/JXEV(PIONEER) Cu ϕ 6.5* ϕ 3.2*0.45t /TOOTH	1	1530210536000S	
125	FOOT	N-70A/JXEV(PIONEER) ABS HF-380 9001 BK A2	4	4000210891000S	
[Transformers, Coils]					
30	POWER TRANS	NC-50(OPC) 230V/50HZ 66*45/MAIN SET	1	8200660450110V	
[Switches, Terminals, Wires]					
15	DISPLAY,LCD	COG-T350MTQV-26 (5)	1	K550350260050S	
16	CABLE,FLAT CARD	0.5*45*160*A(4/4/8/8)*(0.05*0.32) FOLDING	1	L301161450040S	
17	CABLE,FLAT CARD 1.0MM	1.0*16*140*B(4/4/8/8)*(0.05*0.65)*P6 ACU16140B6	1	N711161423450S	
31	ANTENNA,ROD	RFDPA870911EMLB301 115MM WIFI ANT	1	E600000010110S	
32	ANTENNA,ROD	RFDPA870918EMLB302 180MM WIFI ANT	1	E600000010180S	
33	CN,WIRE 2MM	130MM/5P 20010HS-05=20010HS-05 WH1007#26	1	L002131050080V	
34	CN,WIRE 2MM	140MM/6P 20010HS-06=20010HS-06 RD20080#28	1	L002141060080V	
45	SOCKET,POWER AC	AC INLET R-301(B21)	1	G430040807010S	
46	CN,WIRE	40MM/2P CKM3962-03=70218-BS(187*0.8T) WH1617#22	1	L000400020050S	
47	CUSHION KNOB		6	4050216299000V	
48	CUSHION BUTYL		3	4050216309000V	

[Frontend, Units]					
402	POWER TRANS ASSY	MXP-611A(220~230V) SMPS BD ASSY NC50	1	8208001270010S	
404	PMX-WL300-A1	Network module	1	1B5142252-1A	Supplier OAE
406	TUNER,DAB	VERONA2 (FS2445-000-0173) WITH F-TYPE CNT	1	E907244500020S	
200	P.C.B TOTAL ASSY	NC-50-K/EU(PIONEER)/MAIN	1	7025MU1508010	Parent
		NC-50-K/EU(PIONEER)/MAIN-COSMOS	1	7025MU150801W	Parent
202	P.C.B SUB pc ASSY	NC-50DAB(B)WGP(PIONEER)/MAIN	1	7028080621010	Child
		NC-50DAB(B)WGP(PIONEER)/MAIN-COSMOS	1	702808062101W	Child
204	P.C.B SUB pc ASSY	NC-50DAB(B)WGP(PIONEER)/DAB	1	7028080622010	Child
		NC-50DAB(B)WGP(PIONEER)/DAB-COSMOS	1	702808062201W	Child
206	P.C.B SUB pc ASSY	NC-50DAB(B)WGP(PIONEER)/KEY	1	7028080623010	Child
208	P.C.B SUB pc ASSY	NC-50DAB(B)WGP(PIONEER)/CNT2	1	7028080624010	Child
		NC-50DAB(B)WGP(PIONEER)/CNT2-COSMOS	1	702808062401W	Child
210	P.C.B SUB pc ASSY	NC-50DAB(B)WGP(PIONEER)/CNT3	1	7028080625010	Child
250	P.C.B TOTAL ASSY	NC-50-K/EU(PIONEER)/FRONT	1	7025MU1508011	Parent
		NC-50-K/EU(PIONEER)/FRONT-COSMOS	1	7025MU150801X	Parent
252	P.C.B SUB pc ASSY	NC-50DAB(B)WGP(PIONEER)/FRONT	1	7028080611010	Child
254	P.C.B SUB pc ASSY	NC-50DAB(B)WGP(PIONEER)/HP	1	7028080612010	Child
256	P.C.B SUB pc ASSY	NC-50DAB(B)WGP(PIONEER)/IR	1	7028080613010	Child
258	P.C.B SUB pc ASSY	NC-50DAB(B)WGP(PIONEER)/USB	1	7028080614010	Child
260	P.C.B SUB pc ASSY	NC-50DAB(B)WGP(PIONEER)/CNT1	1	7028080615010	Child
		NC-50DAB(B)WGP(PIONEER)/CNT1-COSMOS	1	702808061501W	Child
262	P.C.B SUB pc ASSY	NC-50DAB(B)WGP(PIONEER)/CNT7	1	7028080616010	Child
264	P.C.B SUB pc ASSY	NC-50DAB(B)WGP(PIONEER)/CNT8	1	7028080617010	Child
266	P.C.B SUB pc ASSY	NC-50DAB(B)WGP(PIONEER)/CPU	1	7028080619010	Child
		NC-50DAB(B)WGP(PIONEER)/CPU-COSMOS	1	702808061901W	Child
268	P.C.B SUB pc ASSY	NC-50DAB(B)WGP(PIONEER)/CNT4	1	702808061A010	Child
270	P.C.B SUB pc ASSY	NC-50DAB(B)WGP(PIONEER)/CNT6	1	702808061B010	Child
350	P.C.B TOTAL ASSY	NC-50-K/EU(PIONEER)/CD	1	7025MU1508013	Parent
		NC-50-K/EU(PIONEER)/CD-COSMOS	1	7025MU150801R	Parent
352	P.C.B SUB pc ASSY	NC-50DAB(B)WGP(PIONEER)/CD	1	7028080631010	Child
		NC-50DAB(B)WGP(PIONEER)/CD-COSMOS	1	702808063101W	Child
354	P.C.B SUB pc ASSY	NC-50DAB(B)WGP(PIONEER)/CNT9	1	7028080632010	Child
[Packing]					
900	BOX,GIFT	NC-50DAB(B)WGP 511X412X173	1	6007213310010V	
902	CUSHION,SNOW	NC-50DAB(B)WGP EPS 55 L,R	1	6230214344000V	
904	PE,SHEET	Warning 28 Language NITRON 750*1460 VINA/SET	1	6327040059000V	
[Accessories]					
910	INSTRUCTION MANUAL	NC-50DAB(B)WGP QUICK START GUIDE	1	5707000011190V	
912	SHEET	NC-50DAB(B)WGP / SAFETY BROCHURE	1	5227000009090V	
918	REMOCON	NC-50DAB(PIONEER)/RC-946S 31KEY BLACK	1	8300946000010S	
920	ANTENNA,WIRE	ANT FM DAB-003 WH-STARP	1	E605010120050S	
922	CORD ASSY	16A/250V M3204/VAC17S H05VV-F2C*1MM 1.8M WH-STRAP	1	L068250160120S	

7025MU1508010

<Note>

1. Parts marked by "NSP" are generally unavailable because they are not in our Master Spare Parts List.

2. The ! mark found on some component parts indicates the importance of the safety factor of the part.

Therefore, when replacing, be sure to use parts of identical designation.

: NSP

REF. NO.	PART NAME	DESCRIPTION	Q'TY	PART NO. (SN)	REMARKS
D328 D329 D330 D331 D334 D338 D345 D346 C424 C425 C576 C578	D,SWITCHING	1N4007 52REEL 1000V 1A	8	K000400700220S	
C534	C,ELECT GE 85C	1000UF-M/50V,12.5*25S.BLK SY	4	D040102087010S	
C514 C519	C,ELECT GE 85C	3300UF-M/16V,12.5*25L.BLK SHL 5.0MC SY	1	D040332083010S	
C506 C512	C,ELECT GE 85C	3300UF-M/35V,16*35.5 L.BLK,SHL	2	D040332085050S	
L350 L352	COIL,INDUCTOR	3300UF-M/50V 18*35.5L BLK SY	2	D040332087000S	
P2501	MODULE	POWER INDUCTOR 7G17C-220M-RT SAGAMI	2	D310701712200S	
JACK300	TER,RCA 1PIN	BCR-802-M25 25MBPS OPTICAL RECEIVER INTERFACE	1	E100802000250S	
		RCA-GOLD-OR (RC007-F01R1BY-B)	1	G600107CGGOBYS	

JACK101	TER,RCA 1PIN	Jack RCA-112KG-02(BK)(GOLD)	1	G600112KG020YS	
JACK1	TER,RCA 4PIN	RCA-405BEG1-04G(WH,WH,RD,RD)	1	G602405BEG04YS	
JACK301	TER,BOARD SCREW 4P	(L=RB R=RB) GOLD/SH041F223G	1	G612041F223GDS	
IC312 IC350	IC,LINEAR-REGULATOR	NJM7812FA,16W-TO220F MOLD	2	J126781200010S	
IC313	IC,LINEAR-REGULATOR	NJM7912FA,16W-TO220F MOLD	1	J126791200080S	
D326	D,RECTIFIER BRIDGE	DIODE BRIDGE D10SB60 600V/10A STRAIGHT TYPE	1	K047100600220S	
Q2601	IC,LOGIC-INTERFACE	TPS2051CDBVR 0.5A SOT23 CURRENT LIMIT LOAD SW	1	J046205101010S	
Q2602	IC,LOGIC-INTERFACE	TPS2065CDBVR 1A SOT23 CURRENT LIMIT LOAD SW	1	J046206501010S	
Q8961	IC,LOGIC-D/D CONVER	TPS54331DDAR 3A 28V STEP DOWN CONV(THERMAL PAD)	1	J048543310010S	
IC310 IC311	IC,ANALOG	IRS2092STRPBF SOIC-16 DIGITAL AUDIO DRIVE	2	J080209201010S	
IC305	IC,LINEAR-REGULATOR	LM1117-1.2 SOT-223 1.2V 1A LOW DROPOUT	1	J126111712130S	
IC303 IC306	IC,LINEAR-REGULATOR	LM1117-3.3 SOT-223 3.3V 1A LOW DROPOUT	2	J126111733130S	
Q2090	IC,LINEAR-REGULATOR	NJM2867F05 5V SOT-23-5 LDO VOL REG IC	1	J126286705010S	
IC301	IC,LINEAR-REGULATOR	NJM2867F33 3.3V SOT-23-5 LDO VOL REG IC	1	J126286733010S	
IC101	IC,LINEAR-REGULATOR	NJW4131R-B MSOP8 SW REG IC FOR BOOST CONVERTER	1	J126413100010S	
Q2091	IC,LINEAR-REGULATOR	AP7361-ADJ SOT89-5 DIODES	1	J126736100010S	
IC314	IC,LINEAR-REGULATOR	LM7805RTRL 5V 1A TO-252 DPAK	1	J126780500520S	
IC317	IC,LINEAR-REGULATOR	NJM78L07UA-TLB JRC	1	J126780700110S	
IC315	IC,LINEAR-REGULATOR	LM7905RTRL 5V 1A TO-252 DPAK	1	J126790500520S	
IC318	IC,LINEAR-REGULATOR	NJM79L07UA-TLB JRC	1	J126790700110S	
LED901	LED,ROUND	BZ-BB43V4V-2-TBS22A 5PI BLUE P=2.54	1	K500056000100S	
S900	SW,TACT	SKHV10920A,5MM/260G-REEL	1	G180000270010S	

7025MU1508011

<Note>

1. Parts marked by "NSP" are generally unavailable because they are not in our Master Spare Parts List.
2. The ! mark found on some component parts indicates the importance of the safety factor of the part.
Therefore, when replacing, be sure to use parts of identical designation.

: NSP

REF. NO.	PART NAME	DESCRIPTION	Q'TY	PART NO. (SN)	REMARKS
VEC100	SW,ENCODER	EC12B24T00A6Z02	1	G121122400060S	
S100 S101					
S102 S103	SW,TACT	SKHV10920A,5MM/260G-REEL	6	G180000270010S	
S104 S106					
JK101	JACK,D6.5	PJ-621HAG	1	G402PJ621HAGYS	

7025MU1508013

<Note>

1. Parts marked by "NSP" are generally unavailable because they are not in our Master Spare Parts List.
2. The ! mark found on some component parts indicates the importance of the safety factor of the part.
Therefore, when replacing, be sure to use parts of identical designation.

: NSP

REF. NO.	PART NAME	DESCRIPTION	Q'TY	PART NO. (SN)	REMARKS

NC-50DAB (S) WGP					
<Note>					
1. Parts marked by "NSP" are generally unavailable because they are not in our Master Spare Parts List.					
2. The ! mark found on some component parts indicates the importance of the safety factor of the part.					
Therefore, when replacing, be sure to use parts of identical designation.					
(S) : Silver color model					
WGP : 220-230 V, Europe					
: NSP					
REF. NO.	PART NAME	DESCRIPTION	Q'TY	PART NO. (SN)	REMARKS
[Cabinet, Chassis, Screws, Nuts]					
1	TAPE	NITTO 500	0.15	A710000140000S	
3	PANEL	NC-50DAB(S)WGP SPRAY SILVER9182M ABS BEIGE /INN	1	3067216681100V	
4	PANEL	NC-50DAB(S)WGP AL6063-T5 CHINA/FRONT(AL)	1	3067216678010S	
5	LENS	AA6/JJXCN(PIONEER) ACRYL(PMMA) MILKY A4/REMOCON	1	3710210683100S	
6	LENS	SX-P01 ABS CLEAR/STANDBY	1	3710211321000S	
7	GASKET	N-70A/JXEV GASKET 35X6*2t/ LCD	2	4400210959100S	
8	PLATE	SR5006U1B(-----) CUS t0.2(CMC1A425) A4/USB	1	4470212206000S	
9	PLATE	SR5006U1B(-----) CUS t0.2(CMC1A426) A4/RCA	1	4470212216000S	
10	PLATE	C5210(CuS) t0.3/EARTH	2	4470212706000S	
11	WINDOW	N-50A/JXEV BG=BK only 93.5*63.2*3.0t A4/DISPLAY	1	5077213713000S	
12	BUTTON	SX-P01S/SYXE8 ABS BEIGE CR-PLATING/STANDBY	1	5097215291100S	
13	BADGE	VAM1158-A AL SILVER / PIONEER	1	5630210918000S	
18	CHASSIS ASSY	NC-50DAB(S)WGP(PIONEER) SILVER MODEL/MAIN	1	3208215546010V	
21	BUSHING	VSX-830-K/CUXEVSM(PIONEER)ABS PA757 BK A4/WIFI ANT	2	2410210171000S	
22	CHASSIS	NC-50DAB(B)WGP SECC 0.8t / BACK	1	3207215536000V	
23	TERMINAL	S4011062LN	1	3790000090000S	
24	BRACKET	XHM82K/SYXE8(PIONEER) SECC T1/MECHA	2	4010216116000S	
25	CLAMP	NC-50DAB(S)WGP(PIONEER) CABLE CLAMP FCA-5(NYLON6)	1	4330210313000S	
27	CUSHION	SA-SWR45/JXE(PIONEER) EVA 14T/NFC(REV)	1	4050215785000S	
28	SUPPORTER	MCR611N1GN(-----) SUPPORTER LCF-11/ H:11(KANGYANG	1	4070212461000S	
29	MECHA	CD MECHA EM101RNK	1	8030000010090S	
35	CABINET ASSY	NC-50DAB(S)WGP(PIONEER) /TOP COVER(SR)+SHEET ASSY	1	3008212196010V	
36	KNOB ASSY	() SX-P01 ABS+AL SILVER/VOLUME	1	5088212778100S	
37	NUT	FF6J/MYXCN5(PIONEER) (3/8-32UNEF-2B)*(2.7t)	1	1520210335000S	
38	WASHER	FF6J/MYXCN5(PIONEER) STS IN ϕ 9.6* OUT ϕ 14.0*t0.5	1	1530210152000S	
39	BUSHING	NYLON(BK)/TERMINAL	4	2410040353010S	
40	SPRING	VSAS1/JJXCN(PIONEER) SWP P11.2 IN P17.7 A4/KNOB	1	3720210276000S	
41	COVER	X-HM76(S)WGP SILVER9182M SPRAY ABS GRAY/TRAY	1	4317216101110S	
100	SCREW,TAP TITE	SOLO SOUNDBAR/US(ARCAM) +2S 3*10 B-TYPE BK/BH	2	B020030103B10SV	
102	SCREW,TAP TITE	XHM82S/SYXEV8(PIONEER) +3S 4*6 C-TYPE Ni/BH	4	B020940064B10SV	
104	SCREW,TAP TITE	KRA4030(K)(-----) +2S 3*8 B-TYPE ZNW/BH	68	B020030081B10SV	
106	SCREW,TAP TITE	AGV1200(TEAC) +2S 3*8 B-TYPE BK/FH	2	B020030083F10SV	
108	SCREW,TAP TITE	XHM82K/SYXEV8(PIONEER) +3S 3*6 ZNW/BH	2	B020930061B10SV	
110	SCREW,TAP TITE	KRA4030(K)(-----) +2S 3*8 B-TYPE BK/BH	22	B020030083B10SV	
112	SCREW,TAP TITE ASSY	AVR1910BKE3(-----) +3S 4*10 P+S-WASHER(ROUND)BK/BH	4	B028940101B11SV	
118	SCREW	+2S 3x8 WASHER P17 ZNW/WPH	4	1500210956000SV	
122	WASHER	ϕ 6.5* ϕ 3.5*t0.5 PC+double tape	4	1530210492000S	
124	WASHER	N-50A/JXEV(PIONEER) Cu ϕ 6.5* ϕ 3.2*0.45t /TOOTH	1	1530210536000S	
[Transformers, Coils]					
30	POWER TRANS	NC-50(OPC) 230V/50HZ 66*45/MAIN SET	1	8200660450110V	
[Switches, Terminals, Wires]					
45	SOCKET,POWER AC	AC INLET R-301(B21)	1	G430040807010S	
15	DISPLAY,LCD	COG-T350MTQV-26	1	K550350260050S	
46	CN,WIRE	40MM/2P CKM3962-03=70218-BS(187*0.8T) WH1617#22	1	L000400020050S	
16	CABLE,FLAT CARD	0.5*45*160*A(4/4/8/8)*(0.05*0.32) FOLDING	1	L301161450040S	
17	CABLE,FLAT CARD 1.0MM	1.0*16*140*B(4/4/8/8)*(0.05*0.65)*P6 ACU16140B6	1	N711161423450S	
31	ANTENNA,ROD	RFDPA870911EMLB301 115MM WIFI ANT	1	E600000010110S	
32	ANTENNA,ROD	RFDPA870918EMLB302 180MM WIFI ANT	1	E600000010180S	
33	CN,WIRE 2MM	130MM/5P 20010HS-05=20010HS-05 WH1007#26	1	L002131050080V	
34	CN,WIRE 2MM	140MM/6P 20010HS-06=20010HS-06 RD20080#28	1	L002141060080V	
47	CUSHION KNOB		6	4050216299000V	
48	CUSHION BUTYL		3	4050216309000V	
[Frontend, Units]					
402	POWER TRANS ASSY	MXP-611A(220~230V) SMPS BD ASSY NC50	1	8208001270010S	
404	PMX-WL300-A1	Network module	1	1B5142252-1A	Supplier OAE
406	TUNER,DAB	VERONA2 (FS2445-000-0173) WITH F-TYPE CNT	1	E907244500020S	
200	P.C.B TOTAL ASSY	NC-50-S/EU(PIONEER)/MAIN	1	7025MU1508020	Parent
		NC-50-S/EU(PIONEER)/MAIN-COSMOS	1	7025MU150802W	Parent
202	P.C.B SUB pc ASSY	NC-50DAB(B)WGP(PIONEER)/MAIN	1	7028080621010	Child
		NC-50DAB(B)WGP(PIONEER)/MAIN-COSMOS	1	702808062101W	Child

204	P.C.B SUB pc ASSY	NC-50DAB(B)WGP(PIONEER)/DAB NC-50DAB(B)WGP(PIONEER)/DAB-COSMOS	1 1	7028080622010 702808062201W	Child Child
206	P.C.B SUB pc ASSY	NC-50DAB(B)WGP(PIONEER)/KEY	1	7028080623010	Child
208	P.C.B SUB pc ASSY	NC-50DAB(B)WGP(PIONEER)/CNT2 NC-50DAB(B)WGP(PIONEER)/CNT2-COSMOS	1 1	7028080624010 702808062401W	Child Child
210	P.C.B SUB pc ASSY	NC-50DAB(B)WGP(PIONEER)/CNT3	1	7028080625010	Child
250	P.C.B TOTAL ASSY	NC-50-S/EU(PIONEER)/FRONT NC-50-S/EU(PIONEER)/FRONT-COSMOS	1 1	7025MU1508021 7025MU150802X	Parent Parent
252	P.C.B SUB pc ASSY	NC-50DAB(B)WGP(PIONEER)/FRONT	1	7028080611010	Child
254	P.C.B SUB pc ASSY	NC-50DAB(B)WGP(PIONEER)/HP	1	7028080612010	Child
256	P.C.B SUB pc ASSY	NC-50DAB(B)WGP(PIONEER)/IR	1	7028080613010	Child
258	P.C.B SUB pc ASSY	NC-50DAB(B)WGP(PIONEER)/USB	1	7028080614010	Child
260	P.C.B SUB pc ASSY	NC-50DAB(B)WGP(PIONEER)/CNT1 NC-50DAB(B)WGP(PIONEER)/CNT1-COSMOS	1 1	7028080615010 702808061501W	Child Child
262	P.C.B SUB pc ASSY	NC-50DAB(B)WGP(PIONEER)/CNT7	1	7028080616010	Child
264	P.C.B SUB pc ASSY	NC-50DAB(B)WGP(PIONEER)/CNT8	1	7028080617010	Child
266	P.C.B SUB pc ASSY	NC-50DAB(B)WGP(PIONEER)/CPU NC-50DAB(B)WGP(PIONEER)/CPU-COSMOS	1 1	7028080619010 702808061901W	Child Child
268	P.C.B SUB pc ASSY	NC-50DAB(B)WGP(PIONEER)/CNT4	1	702808061A010	Child
270	P.C.B SUB pc ASSY	NC-50DAB(B)WGP(PIONEER)/CNT6	1	702808061B010	Child
350	P.C.B TOTAL ASSY	NC-50-S/EU(PIONEER)/CD NC-50-S/EU(PIONEER)/CD-COSMOS	1	7025MU1508023 7025MU150802R	Parent
352	P.C.B SUB pc ASSY	NC-50DAB(B)WGP(PIONEER)/CD NC-50DAB(B)WGP(PIONEER)/CD-COSMOS	1 1	7028080631010 702808063101W	Child Child
354	P.C.B SUB pc ASSY	NC-50DAB(B)WGP(PIONEER)/CNT9	1	7028080632010	Child
[Packing]					
900	BOX,GIFT	NC-50DAB(S)WGP 511X412X173	1	6007213310020V	
902	CUSHION,SNOW	NC-50DAB(B)WGP EPS 55 L,R	1	6230214344000V	
904	PE,SHEET	Warning 28 Language NITRON 750*1460 VINA/SET	1	6327040059000V	
[Accessories]					
910	INSTRUCTION MANUAL	NC-50DAB(B)WGP QUICK START GUIDE	1	5707000011190V	
912	SHEET	NC-50DAB(B)WGP / SAFETY BROCHURE	1	5227000009090V	
918	REMOCON	NC-50DAB(PIONEER)/RC-946S 31KEY BLACK	1	8300946000010S	
920	ANTENNA,WIRE	ANT FM DAB-003 WH-STARP	1	E605010120050S	
922	CORD ASSY	16A/250V M3204/VAC17S H05VV-F2C*1MM 1.8M WH-STRAP	1	L068250160120S	

7025MU1508020

<Note>

1. Parts marked by "NSP" are generally unavailable because they are not in our Master Spare Parts List.
 2. The ! mark found on some component parts indicates the importance of the safety factor of the part.
- Therefore, when replacing, be sure to use parts of identical designation.

: NSP

REF. NO.	PART NAME	DESCRIPTION	Q'TY	PART NO. (SN)	REMARKS
D328 D329 D330 D331 D334 D338 D345 D346	D,SWITCHING	1N4007 52REEL 1000V 1A	8	K000400700220S	
C424 C425 C576 C578	C,ELECT GE 85C	1000UF-M/50V,12.5*25S.BLK SY	4	D040102087010S	
C534	C,ELECT GE 85C	3300UF-M/16V,12.5*25L.BLK SHL 5.0MC SY	1	D040332083010S	
C514 C519	C,ELECT GE 85C	3300UF-M/35V,16*35.5 L.BLK,SHL	2	D040332085050S	
C506 C512	C,ELECT GE 85C	3300UF-M/50V 18*35.5L BLK SY	2	D040332087000S	
L350 L352	COIL,INDUCTOR	POWER INDUCTOR 7G17C-220M-RT SAGAMI	2	D310701712200S	
P2501	MODULE	BCR-802-M25 25MBPS OPTICAL RECEIVER INTERFACE	1	E100802000250S	
JACK300	TER,RCA 1PIN	RCA-GOLD-OR (RC007-F01R1BY-B)	1	G600107CGGOBYS	
JACK101	TER,RCA 1PIN	Jack RCA-112KG-02(BK)(GOLD)	1	G600112KG020YS	
JACK1	TER,RCA 4PIN	RCA-405BEG1-04G(WH,WH,RD,RD)	1	G602405BEG04YS	
JACK301	TER,BOARD SCREW 4P	(L=RB R=RB) GOLD/SH041F223G	1	G612041F223GDS	
IC312 IC350	IC,LINEAR-REGULATOR	NJM7812FA,16W-TO220F MOLD	2	J126781200010S	
IC313	IC,LINEAR-REGULATOR	NJM7912FA,16W-TO220F MOLD	1	J126791200080S	
D326	D,RECTIFIER BRIDGE	DIODE BRIDGE D10SB60 600V/10A STRAIGHT TYPE	1	K047100600220S	
Q2601	IC,LOGIC-INTERFACE	TPS2051CDBVR 0.5A SOT23 CURRENT LIMIT LOAD SW	1	J046205101010S	
Q2602	IC,LOGIC-INTERFACE	TPS2065CDBVR 1A SOT23 CURRENT LIMIT LOAD SW	1	J046206501010S	
Q8961	IC,LOGIC-D/D CONVER	TPS54331DDAR 3A 28V STEP DOWN CONV(THERMAL PAD)	1	J048543310010S	
IC310 IC311	IC,ANALOG	IRS2092STRPBF SOIC-16 DIGITAL AUDIO DRIVE	2	J080209201010S	
IC305	IC,LINEAR-REGULATOR	LM1117-1.2 SOT-223 1.2V 1A LOW DROPOUT	1	J126111712130S	
IC303 IC306	IC,LINEAR-REGULATOR	LM1117-3.3 SOT-223 3.3V 1A LOW DROPOUT	2	J126111733130S	
Q2090	IC,LINEAR-REGULATOR	NJM2867F05 5V SOT-23-5 LDO VOL REG IC	1	J126286705010S	
IC301	IC,LINEAR-REGULATOR	NJM2867F33 3.3V SOT-23-5 LDO VOL REG IC	1	J126286733010S	
IC101	IC,LINEAR-REGULATOR	NJW4131R-B MSOP8 SW REG IC FOR BOOST CONVERTER	1	J126413100010S	
Q2091	IC,LINEAR-REGULATOR	AP7361-ADJ SOT89-5 DIODES	1	J126736100010S	

IC314	IC,LINEAR-REGULATOR	LM7805RTRL 5V 1A TO-252 DPAK	1	J126780500520S	
IC317	IC,LINEAR-REGULATOR	NJM78L07UA-TLB JRC	1	J126780700110S	
IC315	IC,LINEAR-REGULATOR	LM7905RTRL 5V 1A TO-252 DPAK	1	J126790500520S	
IC318	IC,LINEAR-REGULATOR	NJM79L07UA-TLB JRC	1	J126790700110S	
LED901	LED,ROUND	BZ-BB43V4V-2-TBS22A 5PI BLUE P=2.54	1	K500056000100S	
S900	SW,TACT	SKHV10920A,5MM/260G-REEL	1	G180000270010S	

7025MU1508021

<Note>

1. Parts marked by "**NSP**" are generally unavailable because they are not in our Master Spare Parts List.
2. The ! mark found on some component parts indicates the importance of the safety factor of the part.
Therefore, when replacing, be sure to use parts of identical designation.

: NSP

REF. NO.	PART NAME	DESCRIPTION	Q'TY	PART NO. (SN)	REMARKS
VEC100	SW,ENCODER	EC12B24T00A6Z02	1	G121122400060S	
S100 S101 S102 S103 S104 S106	SW,TACT	SKHV10920A,5MM/260G-REEL	6	G180000270010S	
JK101	JACK,D6.5	PJ-621HAG	1	G402PJ621HAGYS	

7025MU1508023

<Note>

1. Parts marked by "**NSP**" are generally unavailable because they are not in our Master Spare Parts List.
2. The ! mark found on some component parts indicates the importance of the safety factor of the part.
Therefore, when replacing, be sure to use parts of identical designation.

: NSP

REF. NO.	PART NAME	DESCRIPTION	Q'TY	PART NO. (SN)	REMARKS