



website:<http://biz.LGservice.com>
e-mail:<http://www.LGservice.com/techsup.html>

LCD TV

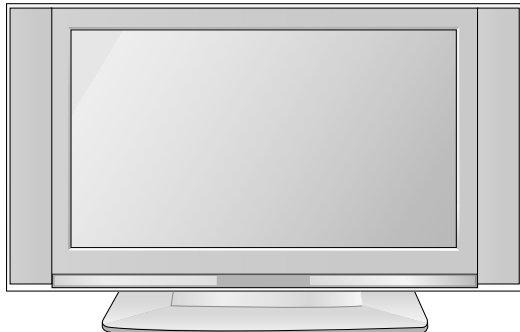
SERVICE MANUAL

CHASSIS : ML-041B

MODEL : RZ-17LZ50

CAUTION

BEFORE SERVICING THE CHASSIS,
READ THE SAFETY PRECAUTIONS IN THIS MANUAL.



CONTENTS

CONTENTS	2
PRODUCT SAFETY	3
SPECIFICATION	6
TIMING CHART.....	11
ADJUSTMENT INSTRUCTION	12
TROUBLE SHOOTING	16
BLOCK DIAGRAM.....	21
WIRING DIAGRAM.....	23
EXPLODED VIEW	24
EXPLODED VIEW PARTS LIST	25
REPLACEMENT PARTS LIST	26
SVC. SHEET	

SAFETY PRECAUTIONS

IMPORTANT SAFETY NOTICE

Many electrical and mechanical parts in this chassis have special safety-related characteristics. These parts are identified by \triangle in the Schematic Diagram and Replacement Parts List.

It is essential that these special safety parts should be replaced with the same components as recommended in this manual to prevent X-RADIATION, Shock, Fire, or other Hazards.

Do not modify the original design without permission of manufacturer.

General Guidance

An **isolation Transformer should always be used** during the servicing of a receiver whose chassis is not isolated from the AC power line. Use a transformer of adequate power rating as this protects the technician from accidents resulting in personal injury from electrical shocks.

It will also protect the receiver and its components from being damaged by accidental shorts of the circuitry that may be inadvertently introduced during the service operation.

If any fuse (or Fusible Resistor) in this TV receiver is blown, replace it with the specified.

When replacing a high wattage resistor (Oxide Metal Film Resistor, over 1W), keep the resistor 10mm away from PCB.

Keep wires away from high voltage or high temperature parts.

X-RAY Radiation

Warning:

The source of X-RAY RADIATION in this TV receiver is the High Voltage Section and the LCD PANEL.
For continued X-RAY RADIATION protection, the replacement panel must be the same type panel as specified in the Replacement Parts List.

To determine the presence of high voltage, use an accurate high impedance HV meter.

Adjust brightness, color, contrast controls to minimum.

Measure the high voltage.

The meter reading should indicate

23.5 \pm 1.5KV: 14-19 inch, 26 \pm 1.5KV: 19-21 inch,

29.0 \pm 1.5KV: 25-29 inch, 30.0 \pm 1.5KV: 32 inch

If the meter indication is out of tolerance, immediate service and correction is required to prevent the possibility of premature component failure.

Before returning the receiver to the customer,

always perform an **AC leakage current check** on the exposed metallic parts of the cabinet, such as antennas, terminals, etc., to be sure the set is safe to operate without damage of electrical shock.

Leakage Current Cold Check(Antenna Cold Check)

With the instrument AC plug removed from AC source, connect an electrical jumper across the two AC plug prongs. Place the AC switch in the on position, connect one lead of ohm-meter to the AC plug prongs tied together and touch other ohm-meter lead in turn to each exposed metallic parts such as antenna terminals, phone jacks, etc.

If the exposed metallic part has a return path to the chassis, the measured resistance should be between 1M Ω and 5.2M Ω .

When the exposed metal has no return path to the chassis the reading must be infinite.

Any other abnormality exists that must be corrected before the receiver is returned to the customer.

Leakage Current Hot Check (See below Figure)

Plug the AC cord directly into the AC outlet.

Do not use a line Isolation Transformer during this check.

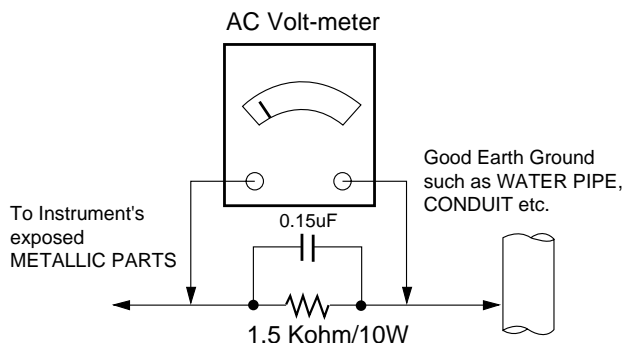
Connect 1.5K/10watt resistor in parallel with a 0.15uF capacitor between a known good earth ground (Water Pipe, Conduit, etc.) and the exposed metallic parts.

Measure the AC voltage across the resistor using AC voltmeter with 1000 ohms/volt or more sensitivity.

Reverse plug the AC cord into the AC outlet and repeat AC voltage measurements for each exposed metallic part. Any voltage measured must not exceed 0.75 volt RMS which corresponds to 0.5mA.

In case any measurement is out of the limits specified, there is possibility of shock hazard and the set must be checked and repaired before it is returned to the customer.

Leakage Current Hot Check circuit



SERVICING PRECAUTIONS

CAUTION: Before servicing receivers covered by this service manual and its supplements and addenda, read and follow the **SAFETY PRECAUTIONS** on page 3 of this publication.

NOTE: If unforeseen circumstances create conflict between the following servicing precautions and any of the safety precautions on page 3 of this publication, always follow the safety precautions. Remember: Safety First.

General Servicing Precautions

1. Always unplug the receiver AC power cord from the AC power source before;
 - a. Removing or reinstalling any component, circuit board module or any other receiver assembly.
 - b. Disconnecting or reconnecting any receiver electrical plug or other electrical connection.
 - c. Connecting a test substitute in parallel with an electrolytic capacitor in the receiver.

CAUTION: A wrong part substitution or incorrect polarity installation of electrolytic capacitors may result in an explosion hazard.

2. Test high voltage only by measuring it with an appropriate high voltage meter or other voltage measuring device (DVM, FETVOM, etc) equipped with a suitable high voltage probe. Do not test high voltage by "drawing an arc".

3. Do not spray chemicals on or near this receiver or any of its assemblies.

4. Unless specified otherwise in this service manual, clean electrical contacts only by applying the following mixture to the contacts with a pipe cleaner, cotton-tipped stick or comparable non-abrasive applicator; 10% (by volume) Acetone and 90% (by volume) isopropyl alcohol (90%-99% strength)

CAUTION: This is a flammable mixture.

Unless specified otherwise in this service manual, lubrication of contacts is not required.

5. Do not defeat any plug/socket B+ voltage interlocks with which receivers covered by this service manual might be equipped.
6. Do not apply AC power to this instrument and/or any of its electrical assemblies unless all solid-state device heat sinks are correctly installed.
7. Always connect the test receiver ground lead to the receiver chassis ground before connecting the test receiver positive lead.

Always remove the test receiver ground lead last.

8. Use with this receiver only the test fixtures specified in this service manual.

CAUTION: Do not connect the test fixture ground strap to any heat sink in this receiver.

Electrostatically Sensitive (ES) Devices

Some semiconductor (solid-state) devices can be damaged easily by static electricity. Such components commonly are called *Electrostatically Sensitive (ES) Devices*. Examples of typical ES devices are integrated circuits and some field-effect transistors and semiconductor "chip" components. The following techniques should be used to help reduce the incidence of component damage caused by static by static electricity.

1. Immediately before handling any semiconductor component or semiconductor-equipped assembly, drain off any electrostatic charge on your body by touching a known earth ground. Alternatively, obtain and wear a commercially available discharging wrist strap device, which should be removed to prevent potential shock reasons prior to applying power to the

unit under test.

2. After removing an electrical assembly equipped with ES devices, place the assembly on a conductive surface such as aluminum foil, to prevent electrostatic charge buildup or exposure of the assembly.
3. Use only a grounded-tip soldering iron to solder or unsolder ES devices.
4. Use only an anti-static type solder removal device. Some solder removal devices not classified as "anti-static" can generate electrical charges sufficient to damage ES devices.
5. Do not use freon-propelled chemicals. These can generate electrical charges sufficient to damage ES devices.
6. Do not remove a replacement ES device from its protective package until immediately before you are ready to install it. (Most replacement ES devices are packaged with leads electrically shorted together by conductive foam, aluminum foil or comparable conductive material).
7. Immediately before removing the protective material from the leads of a replacement ES device, touch the protective material to the chassis or circuit assembly into which the device will be installed.

CAUTION: Be sure no power is applied to the chassis or circuit, and observe all other safety precautions.
8. Minimize bodily motions when handling unpackaged replacement ES devices. (Otherwise harmless motion such as the brushing together of your clothes fabric or the lifting of your foot from a carpeted floor can generate static electricity sufficient to damage an ES device.)

General Soldering Guidelines

1. Use a grounded-tip, low-wattage soldering iron and appropriate tip size and shape that will maintain tip temperature within the range or 500° F to 600° F.
2. Use an appropriate gauge of RMA resin-core solder composed of 60 parts tin/40 parts lead.
3. Keep the soldering iron tip clean and well tinned.
4. Thoroughly clean the surfaces to be soldered. Use a mall wire-bristle (0.5 inch, or 1.25cm) brush with a metal handle. Do not use freon-propelled spray-on cleaners.
5. Use the following unsoldering technique
 - a. Allow the soldering iron tip to reach normal temperature. (500° F to 600° F)
 - b. Heat the component lead until the solder melts.
 - c. Quickly draw the melted solder with an anti-static, suction-type solder removal device or with solder braid.

CAUTION: Work quickly to avoid overheating the circuitboard printed foil.
6. Use the following soldering technique.
 - a. Allow the soldering iron tip to reach a normal temperature (500° F to 600° F)
 - b. First, hold the soldering iron tip and solder the strand against the component lead until the solder melts.
 - c. Quickly move the soldering iron tip to the junction of the component lead and the printed circuit foil, and hold it there only until the solder flows onto and around both the component lead and the foil.

CAUTION: Work quickly to avoid overheating the circuit board printed foil.
 - d. Closely inspect the solder area and remove any excess or splashed solder with a small wire-bristle brush.

IC Remove/Replacement

Some chassis circuit boards have slotted holes (oblong) through which the IC leads are inserted and then bent flat against the circuit foil. When holes are the slotted type, the following technique should be used to remove and replace the IC. When working with boards using the familiar round hole, use the standard technique as outlined in paragraphs 5 and 6 above.

Removal

1. Desolder and straighten each IC lead in one operation by gently prying up on the lead with the soldering iron tip as the solder melts.
2. Draw away the melted solder with an anti-static suction-type solder removal device (or with solder braid) before removing the IC.

Replacement

1. Carefully insert the replacement IC in the circuit board.
2. Carefully bend each IC lead against the circuit foil pad and solder it.
3. Clean the soldered areas with a small wire-bristle brush. (It is not necessary to reapply acrylic coating to the areas).

"Small-Signal" Discrete Transistor

Removal/Replacement

1. Remove the defective transistor by clipping its leads as close as possible to the component body.
2. Bend into a "U" shape the end of each of three leads remaining on the circuit board.
3. Bend into a "U" shape the replacement transistor leads.
4. Connect the replacement transistor leads to the corresponding leads extending from the circuit board and crimp the "U" with long nose pliers to insure metal to metal contact then solder each connection.

Power Output, Transistor Device

Removal/Replacement

1. Heat and remove all solder from around the transistor leads.
2. Remove the heat sink mounting screw (if so equipped).
3. Carefully remove the transistor from the heat sink of the circuit board.
4. Insert new transistor in the circuit board.
5. Solder each transistor lead, and clip off excess lead.
6. Replace heat sink.

Diode Removal/Replacement

1. Remove defective diode by clipping its leads as close as possible to diode body.
2. Bend the two remaining leads perpendicular y to the circuit board.
3. Observing diode polarity, wrap each lead of the new diode around the corresponding lead on the circuit board.
4. Securely crimp each connection and solder it.
5. Inspect (on the circuit board copper side) the solder joints of the two "original" leads. If they are not shiny, reheat them and if necessary, apply additional solder.

Fuse and Conventional Resistor

Removal/Replacement

1. Clip each fuse or resistor lead at top of the circuit board hollow stake.
2. Securely crimp the leads of replacement component around notch at stake top.
3. Solder the connections.

CAUTION: Maintain original spacing between the replaced component and adjacent components and the circuit board to prevent excessive component temperatures.

Circuit Board Foil Repair

Excessive heat applied to the copper foil of any printed circuit board will weaken the adhesive that bonds the foil to the circuit board causing the foil to separate from or "lift-off" the board. The following guidelines and procedures should be followed whenever this condition is encountered.

At IC Connections

To repair a defective copper pattern at IC connections use the following procedure to install a jumper wire on the copper pattern side of the circuit board. (Use this technique only on IC connections).

1. Carefully remove the damaged copper pattern with a sharp knife. (Remove only as much copper as absolutely necessary).
2. Carefully scratch away the solder resist and acrylic coating (if used) from the end of the remaining copper pattern.
3. Bend a small "U" in one end of a small gauge jumper wire and carefully crimp it around the IC pin. Solder the IC connection.
4. Route the jumper wire along the path of the out-away copper pattern and let it overlap the previously scraped end of the good copper pattern. Solder the overlapped area and clip off any excess jumper wire.

At Other Connections

Use the following technique to repair the defective copper pattern at connections other than IC Pins. This technique involves the installation of a jumper wire on the component side of the circuit board.

1. Remove the defective copper pattern with a sharp knife. Remove at least 1/4 inch of copper, to ensure that a hazardous condition will not exist if the jumper wire opens.
2. Trace along the copper pattern from both sides of the pattern break and locate the nearest component that is directly connected to the affected copper pattern.
3. Connect insulated 20-gauge jumper wire from the lead of the nearest component on one side of the pattern break to the lead of the nearest component on the other side. Carefully crimp and solder the connections.

CAUTION: Be sure the insulated jumper wire is dressed so the it does not touch components or sharp edges.

SPECIFICATION

NOTE : Specifications and others are subject to change without notice for improvement.

1. Application range

This specification is applied to ML-041B chassis.

2. Requirement for Test

Testing for standard of each part must be followed in below condition.

- (1) Temperature: 25°C ± 2°C
- (2) Humidity: 65% ± 10%
- (3) Power: Standard input voltage (AC 100-240V, 50/60Hz)
- (4) Measurement must be performed after heat-run more than 30min.
- (5) Adjusting standard for this chassis is followed a special standard.

3.General Specification

No.	Item		Specification	Remark
1	Maker		LPL	LPL
	Type		TFT Color LCD Module	
	ActiveDisplay Area		17.0 inches(380.16mm) diagonal(Aspect 4:3)	
	Pixel Pitch [mm]		0.291mm(H)x0.291mm(V)xRGB	
	Electrical Interface		LVDS	
	Color Depth		6BIT WITH FRC, 16,777,216 colors	
	Size [mm]		400(H)x258.7(V)x22(D)	
	Surface Treatment		Anti Glare Hard Coating(3H)	
	Operating Mode		Normally Black	
	Back light Unit		4 CCFL(4 lamps)	
	R/T	Typ.	R.T.:12ms + F.T.:23ms	
2	Maker		AUO	AUO
	Type		TFT Color LCD Module	
	ActiveDisplay Area		17.1 inches(434.38mm) diagonal	
	Pixel Pitch [mm]		0.2895mm(H)x0.2895mm(V)xRGB	
	Electrical Interface		LVDS	
	Color Depth		RGB 6-BIT 16,2MColors	
	Size [mm]		404(H)x248.5(V)x17.2(D)	
	Surface Treatment		Hard Coating, AR Glare (3H)	
	Operating Mode		Normally Black	
	Back light Unit		4 CCFL(4 lamps)	
	R/T	Typ.	R.T:15/25ms F.T: 10/15ms	

4. Feature and Function

No.	Item	Specification	Remark
1	Teletext	TOP, FLOF, LIST 10 page	TTop(option)
2	REMOCON	NEC Code	PAL/ NTSC
3	AV Input	2	Rear(option, NT), side(Only 50Tool)
4	S-Vedio Input	1	Rear
5	Component input		Rear (option, NT)
6	PERI TV Connector	Full SCART : 1	Rear (option, EU)
7	RGB(VGA)Input	1	D-sub 15 pin
8	H/p input	1	
9	PC Sound input	1	
10	RS-232	YES	Only RM-20LA70C, RM-17LZ50C
11	Discrete IR	NO	
12	2 Carrier Stereo	BG, DK	
13	NICAM Stereo	BG, I, LL'	
14	2 Carrier Dual	BG, DK	
15	NICAM Dual	BG, I, LL'	
16	DW(Double Window) Mode	X	
17	MW(Multi Window) Mode	X	
18	Film Mode	X	
19	Noise Reduction	X	
20	Progressive Scan	X	
21	Motion Detection	X	
22	SRS WOW	X	
23	wivel Speaker	X	
24	Ez-pip	X	
25	ARC	O	
26	DRP	X	
27	DCDI	X	
28	HDCP	X	

5. Optical Character

No.	Item	Specification					Remark
				LPL	AUO		
1	Viewing Angle <CR ≥ 10>	R/L, U/D		85/88 85/88	75/85 75/85		
2	Luminance	Luminance(cd/ m ²)		450	450		Typical
		Variation		1.3	1.5		MAX/MIN
3	Contrast Ratio			400	600		ALL white/All back
4	CIE Color Coordinates	WHITE	W _x	Typ.	0.289	0.31	Min =Typ.-0.03 Max =Typ.+0.03
			W _y	Typ.	0.303	0.33	
		RED	W _r	Typ.	0.633	0.64	
			Y _r	Typ.	0.341	0.34	
		Green	X _g	Typ.	0.280	0.29	
			Y _g	Typ.	0.069	0.61	
		Blue	X _b	Typ.	0.145	0.14	
			Y _b	Typ.	0.069	0.07	

6.Engineering Specification

6-1.General Specification(TV)

No.	Item	Specification	Remark
1	Video input applicable system	1)PAL-D/K,B/G,I 2)NTSC-M 3)SECAM NTSC 4.43'	
2	Receivable broadcasting system	1)PAL/SECAM BG 2)PAL/SECAM DK 3)PAL I/I 4)SECAM L/L' 5)NTSC M	EU/Non-EU(RZ/RT) (PAL Market)
		6)PAL-N/M 7)NTSC M	7)NTSC Area(RM)
3	RF input channel	VHF : E2 ~ E12 UHF : E21 ~ E69 CATV : S1 ~ S20 HYPER : S21 ~ S41	PAL
		L/L' : B,C,D	FRANCE
		VHF : 2 ~ 13 UHF : 14 ~ 69 CATV : 1 ~ 125	NTSC
		VHF Low : 1~M10 VHF High : 4~S22 UHF : S23~62	JAPAN
4	Input voltage	AC 100 - 240V/ 50Hz,60HZ	
5	Tuning system	FVS 100 program FS	PAL, 200PR.(Option) NTSC
6	Operting environment	1)Temp : 0 ~ 40 deg 2)Humidity : 85%	
7	Storage environment	3)Temp : -20 ~ 60 deg 4)Humidity : 85%	

No.	Item	Specification			Remark
1	Power Supply	H/V Sync	Video	Power Consumption	LED Color
	Normal	On/On	Active	≤ 65W	GREEN
	Stand By	Off/On	Off	≤ 1W	LED
	Suspend Mode	On/Off		≤ 1W	
	DPM Off Mode	Off/Off		≤ 1W	
	Cut-off Switch off	-	-	0W	OFF
				PBP SWAP ► ON/OFF	
	ITEM	Specification			Remark
2	D-SUB Pin Configuraion	1: RED 3: Blue: 5: S.T(GND) 7: Green GND 9: N.C 11: ID0(GND) 13: H-Sync 15: SCL	2: Green 4: ID2(GND) 6: RED GND 8: Blue GND 10: D-GND 12: SDA 14: V-Sync Shell: GND		10: Digital GND
3	Control Function	1) Contrast/Brightness 2) H-Position/V-Position 3) Tracking : Clock/ Phase 4) Auto Configure RESET			
4	Comoponent Jack	1: Y 2: Pb 3: Pr			Middle east/ NTSC Area
5	D4 Jack (525i, 525p, 750p, 1125i)	1: Y 3: Pb 5: Pr 7: Line1 Ready 9: LINE2 11: LINE3 5) 13: Line3 Ready	2: Y GND 4: Pb GND 6: Pr GND 8: LINE1 10: Line2 Ready 12: SWITCH GND 6) 14: SWITCH		JAPAN Only

6-2.Power

NO	Item	Min	Typ	Max	Unit	Remark
1	AC Power Shut Down Voltage	90		264	V	
2	DC Voltage, Inverter	22.8	24	25.2	V	
3	DC Voltage, LCD Panel	11.4	12	12.6	V	
4	DC Voltage, Audio	14.0	15	16.0	V	
5	DC Voltage, Tuner(5)	4.5	5	5.5	V	Japan only
	DC Voltage, Tuner(9)	8.5	9	9.5	V	
6	DC Voltage, Tuning(31)	31	33	35	V	
7	DC Voltage, VCTi(5)	4.5	5	5.5	V	
	DC Voltage, VCTi(8)	7.5	8	8.5	V	
8	DC Voltage, VCTi(3.3)	3.1	3.3	3.5	V	
	DC Voltage, VCTi(1.8)	1.6	1.8	2.0	V	
9	DC Voltage, GM2221 (3.3)	3.1	3.3	3.5	V	
	DC Voltage, GM2221 (1.8)	1.6	1.8	2.0	V	
10	DC Voltage, Digital (3.3)	2.8	3.3	3.8	V	
11	DC Voltage, Digital (5)	4.5	5	5.5	V	

6-3. External Interface

NO	Item	Min	Typ	Max	Unit	Remark	
1.	Video Input Level	0.85	1	1.15	Vpp	EN-50049	
2.	Audio Input Level	0.4	0.5	0.6	V	NTSC:0.4Vrms(Typ)	
3.	Audio Input Frequency Response	0.1		7	KHz		
4.	Audio Input S/N	40			DB		
5.	Audio Input Distortion			2	%		
6.	Audio Input Dynamic Range	2			V		
7.	Video Output Level	0.85	1	1.15	Vpp		
8.	Video Output Frequency Response	3.8			MHz		
9.	Video Output S/N	40			DB		
10.	Audio Output Level	0.4	0.5	0.6	V		
11.	Audio Output Frequency Response	0.1		7	KHz		
12.	Audio Output S/N	40			DB		
13.	Audio Output Distortion			2	%		
14.	Video Input Level, R/G/B	0.6	0.7	0.8	Vpp	75 ohm	
15.	Video Input Level, Component(Y, PB, PR)	0.6	0.7	0.8	Vpp	75 ohm	
16.	RGB Input Resolution, Vertical		768		Pixel	Only 20"	640 Pixel
17.	RGB Input Resolution, Horizontal		1280		Pixel		480
18.	RGB Input Horizontal Frequency				KHz	See table 5-5	
19.	RGB Input Frame Rate				Hz	See table 5-5	

6-4. The Others

NO	Item	Min	Typ	Max	Unit	Remark
1	Search Sensitivity			-85	dBm	
2	Soft Ware Functionality Test					LGE Specification
3	REMOCON Working Sensitivity, Straight	0.1		10	m	
4	REMOCON Working Sensitivity, T/B/L/R	0.1		9	m	30 degree
5	Closed Caption Sensitivity			-70	dBm	NTSC ONLY
6	Teletext Sensitivity			-70	dBm	

7. Signal Timing(Resolution)

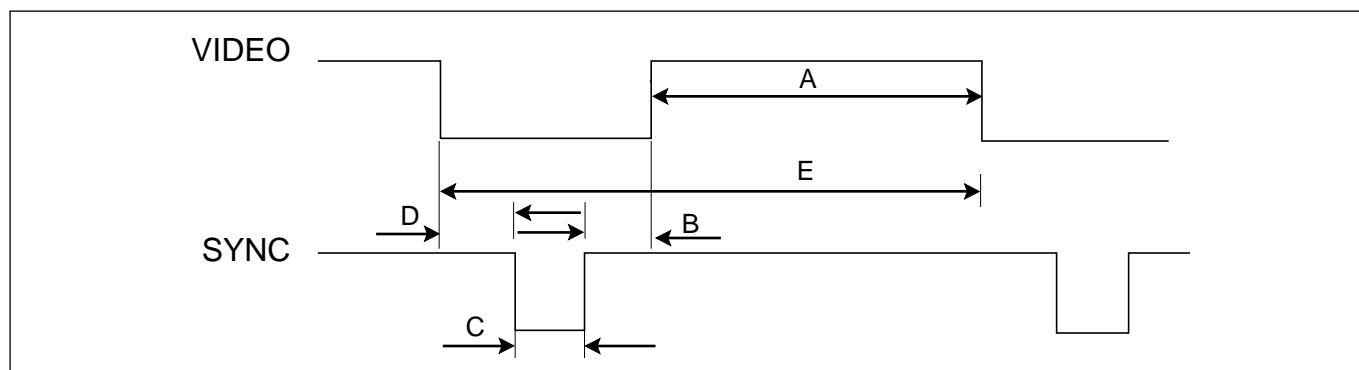
7-1. PC Mode

[Table 7] Timming chart of Receivable Mode

* H [dot] / V [line]

Mode	VGA-60	VGA-67	VGA-75	VGA-75	VGA-85	SVGA-56	SVGA-60	SVGA-72	SVGA-75	SVGA-85	MAC-75	XGA-70	XGA-75	XGA-85 X	WXGA-50	WXGA-60
H_display	640	640	640	640	640	800	800	800	800	800	832	1024	1024	1024	1280	1280
V_display	480	480	480	480	480	600	600	600	600	600	624	768	768	768	768	768
V frequency	60	67	75	75	85	56	60	72	75	85	75	70	75	85	50	60
H_total	800	864	840	840	832	1024	1056	1040	1056	1048	1152	1328	1312	1376	1648	1648
H_blanking	160	224	200	200	192	224	256	240	256	248	320	304	288	352	368	400
H_sync	96	64	64	64	56	72	128	120	80	64	64	136	96	96	128	136
H Polarity	NEG.	NEG.	NEG	NEG	NEG	POS	POS	POS	POS	POS	NEG	NEG	POS	POS	NEG	NEG
H_bp	48	96	120	120	80	128	88	64	160	152	224	144	176	208	184	200
H_fp	16	64	16	16	56	24	40	56	16	32	32	24	16	48	56	64
H-freq[kHz]	31.469	35.0	37.5	37.5	43.269	35.156	37.879	48.077	46.875	53.674	49.725	56.476	60.023	68.677	39.518	47.693
/Clk[MHz]	25.175	30.24	31.5	31.5	36.0	36.0	40.0	50.0	49.5	56.25	57.283	75.0	78.75	84.997	65.125	80.125
V_total	525	525	500	500	509	625	628	666	625	631	667	806	800	808	791	795
V_blanking	45	45	20	20	29	25	28	66	25	31	43	38	32	40	23	27
V_sync	2	3	3	3	3	2	4	6	3	3	3	6	3	3	7	7
V Polarity	NEG	NEG	NEG	NEG	NEG	POS	POS	POS	POS	POS	NEG	NEG	POS	POS	POS	POS
V_bp	33	39	16	16	25	22	23	23	21	27	39	29	28	36	15	19
V_fp	10	3	1	1	1	1	1	37	1	1	1	3	1	1	1	1

TIMING CHART



<< Dot Clock (MHz), Horizontal Frequency (kHz), Vertical Frequency (Hz), Horizontal etc... (μs), Vertical etc... (ms) >>

Mode	H/V Sort	Sync Polarity	Dot Clock	Frequency	Total Period (E)	Video Active Time (A)	Front Porch (B)	Sync Duration (D)	Back Porch (F)	Resolution
1	H	+	25.175	31.468	800	640	16	96	48	640x350
	V	-		70.090	449	350	37	2	60	
2	H	-	28.324	31.469	900	720	18	108	54	720x400
	V	+		70.082	449	400	13	2	34	
3	H	-	25.175	31.469	800	640	16	96	48	640x480
	V	-		59.94	525	480	10	2	33	
4	H	-	31.5	37.5	840	640	16	64	120	640x480
	V	-		75	500	480	1	3	16	
5	H	+	40.0	37.879	1056	800	40	128	88	800x600
	V	+		60.317	628	600	1	4	23	
6	H	+	49.5	46.875	1056	800	16	80	160	800x600
	V	+		75.0	625	600	1	3	21	
7	H	+/-	57.283	49.725	1152	832	32	64	224	832x624
	V	+/-		74.55	667	624	1	3	39	
8	H	-	65.0	48.363	1344	1024	24	136	160	1024x768
	V	-		60.004	806	768	3	6	29	
9	H	+	78.75	60.023	1312	1024	16	96	176	1024x768
	V	+		75.029	800	768	1	3	28	
10	H	+	79.50	47.776	1664	1280	64	128	192	1280x768
	V	-		59.870	798	768	3	7	20	
11	H	-	102.875	60.091	1712	1280	80	136	216	1280x768
	V	+		74.926	802	768	1	7	26	

ADJUSTMENT INSTRUCTION

1. Application Object

This instruction is for the application to the LCD TV.

2. Adjustment

2.1 Adjustment overview

The unit is set to automatically adjust using the factory automation equipment. However when errors occur, it should be adjusted manually.

2.2 Auto Gain/Offset adjustment

2.2.1 RF Mode adjustment

2.2.1.1 Adjustment preparation

- Conduct Heat Run at the RF fog signals for more than 30 minutes.

2.2.1.2 Auto Gain/Offset adjustment

- Press IN-START Key to convert to the adjustment mode using the adjustment (SVC) remote controller, and press VOL+ Key at the Auto Gain menu.
(In case of RM-17LZ50, press IN-START Key twice)
- Once the adjustment is completed, press the Enter Key to save and finish the adjustment.

2.2.3 PC Mode adjustment

2.2.3.1 Adjustment preparation

- Conduct Heat Run at the RF fog signals for more than 30 minutes.
- Connect the Pattern Generator to 15 Pin D-Sub Jack of LCD TV.

2.2.3.2 Auto Gain/Offset adjustment

- Convert the input mode to PC input.
- Using the Pattern Generator (801GF, VG819) adjust XGA (1024 X 768@60Hz) for resolution and 16 Step Gray signals for the pattern. Or adjust the 16 Step (11 Step) Gray signals in accordance with VG819.
- Convert the input mode to PC input and convert to the adjustment mode using the adjustment (SVC) remote controller and pressing the IN-START Key, and then press VOL+ Key at the AutoGain menu.
- Once the adjustment is completed, press the Enter Key to save and finish the adjustment.

2.3 EDID (The Extended Display Identification Data) setting

- Connect the 15 Pin D-Sub Cable to D-Sub Jack.
- Set the input mode of Set to PC.
- Connect the DDC automation equipment to write DDC data.

2.3.1 EDID DATA

	00	01	02	03	04	05	06	07	08	09	0A	0B	0C	0D	0E	0F
00	00	FF	FF	FF	FF	FF	FF	00	1E	6D	B7	43	01	01	01	01
10	04	0E	01	03	01	40	26	78	08	B1	DA	A1	56	48	98	24
20	13	48	4B	2F	CE	00	31	40	01	01	01	01	45	40	45	4F
30	61	40	81	80	01	01	4E	1F	00	90	51	00	1B	30	40	88
40	13	00	A2	0B	32	00	00	18	C3	1E	00	20	41	00	20	30
50	10	60	13	00	A2	0B	32	00	00	1E	00	00	00	FD	00	38
60	4B	1F	3D	0A	00	0A	20	20	20	20	20	20	00	00	00	FC
70	00	52	5A	31	37	4C	5A	35	30	0A	20	20	20	20	00	53

*Option(PAL)

NO	ITEM	CONDITION	REMARK
Option 1			
1	Side AV	No	No: Side AV Off Yes: Side AV On
2	SCART	Yes	No: Component input Yes: SCART input
3	PC	Yes	No: PC Off Yes: PC On
4	SideComp	No	No: SideComp Off Yes: SideComp On
5	16:9	Yes	No: ARC Off Yes: ARC On
6	200PR	No	No: 100 Program Yes: 200 Program
7	Text	Yes	No: Text Off Yes: Text On
8	ACMS	Yes	No: ACMS On Yes: ACMS Off
Option 2			
1	HiDev	No	No: HiDev Off Yes: HiDev On
2	Hotel	No	No: Hotel Off Yes: Hotel On
3	Top	Yes	No: Top Off Yes: Top On
4	I II SAVE	Yes	No: I II Save Off Yes: I II Save On
5	Turbo Vol	No	No: Turbo Volume Off Yes: Turbo Volume On
6	Ch/Aus	No	No: except below area(Off) Yes: China, Australia

NO	ITEM	CONDITION	REMARK
Option 3			
1	Language	1	0: Eng Only 1: English/German/French /Italian/Spanish/Dutch/ Swedish/Norwegian/Da nish/Finnish/Portugues e/Rumanian/Polish/Hng
			arian/Czech/Russian 2: English/German/French /Italian/Spanish/Dutch/ Swedish/Norwegian/Da nish/Finnish/Portugues e/Rumanian/Polish/Hng arian/Czech/Russian 3: Eng /Chinese 4: Eng /Franch/Arab 5: Eng /Parsi
2	Txt Lang	0	0: WEST EU 1: EAST EU 1 2: TURKY EU 3: EAST EU 2 4: CYRILLIC 1 5: CYRILLIC 2 6: CYRILLIC 3 7: TURKY GRE 1 8: TURKY GRE 2 9: TURKY GRE 3 10: ARAB FRAN 11: ARAB ENG 12: ARAB HEB 1 13: ARAB HEB 2 14: FARSI ENG 15: FARSI FRA 16: FARI ALL
3	Inch opt	2	1: 15inch 2: 17inch 3: 20inch
4	Panel	7	0: VGA CMO 1: VGA LPL 2: VGA AUO 3: SVGA AUO 4: XGA LPL 5: XGA LPL 6: XGA HYD 7: WXGA LPL 8: WXGA AUO

EDID ADJUSTMENT

Windows EDID V1.0 User Manual

Operating System: MS Windows 98, 2000, XP

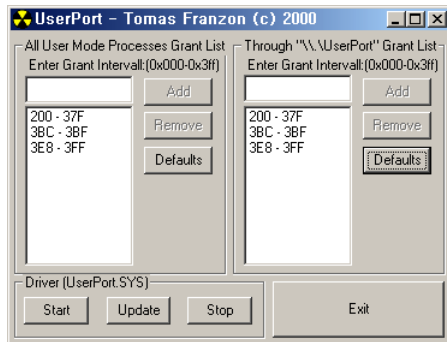
Port Setup: Windows 98 => Don't need setup

Windows 2000, XP => Need to Port Setup.

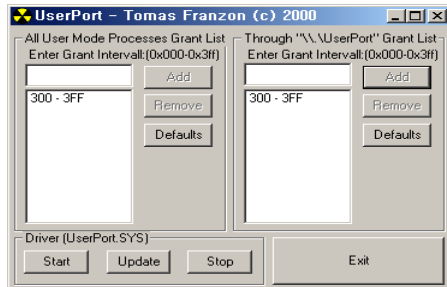
This program is available to LCD Monitor only.

1. Port Setup

- Copy "UserPort.sys" file to "c:\WINNT\system32\drivers" folder
- Run Userport.exe



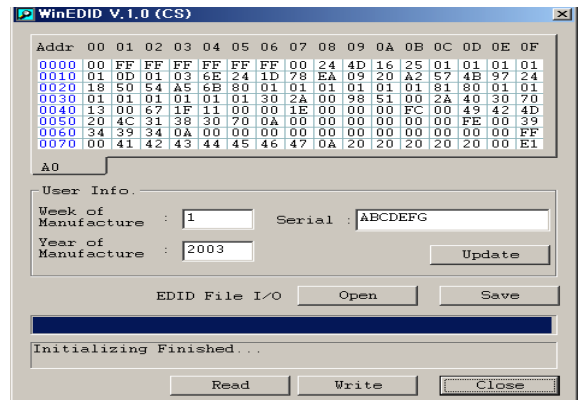
- Remove all default number
- Add 300-3FF



- Click Start button.
- Click Exit button.

2. EDID Read & Write

- Run WinEDID.exe



- Edit Week of Manufacture, Year of Manufacture, Serial Number

- Input User Info Data
- Click "Update" button
- Click "Write" button

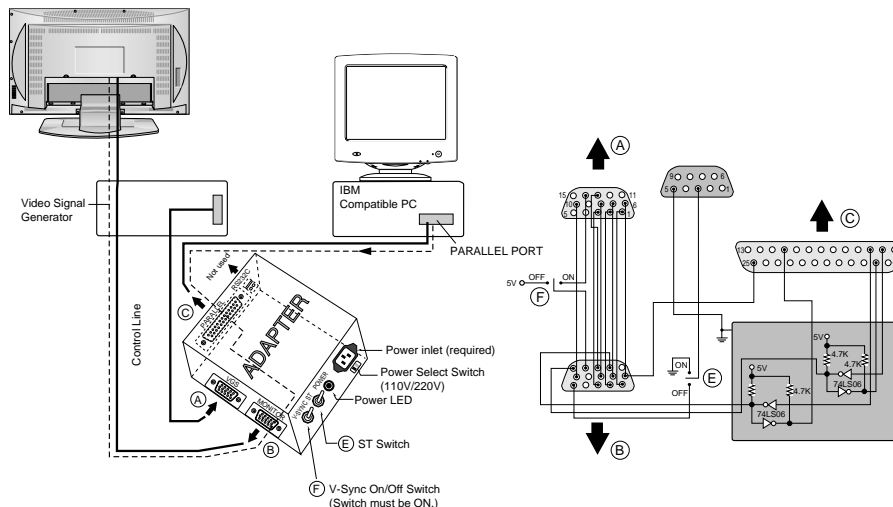
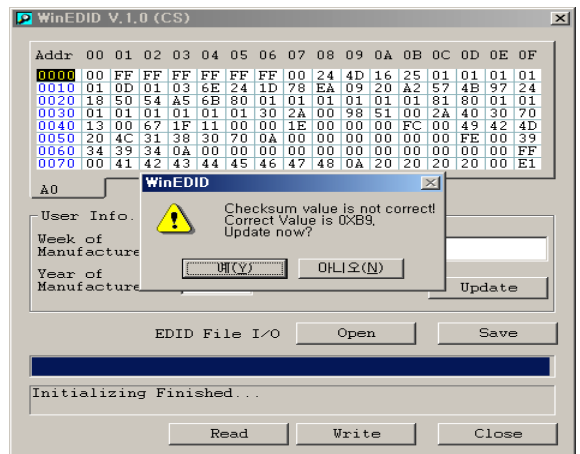
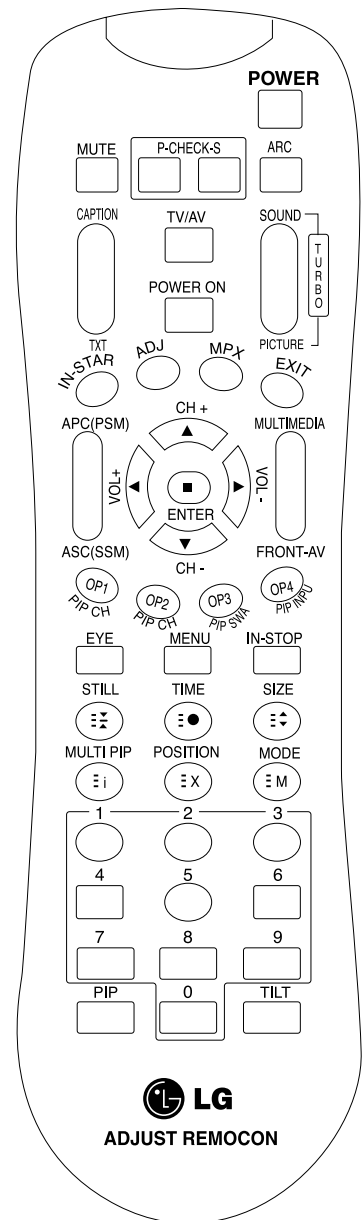


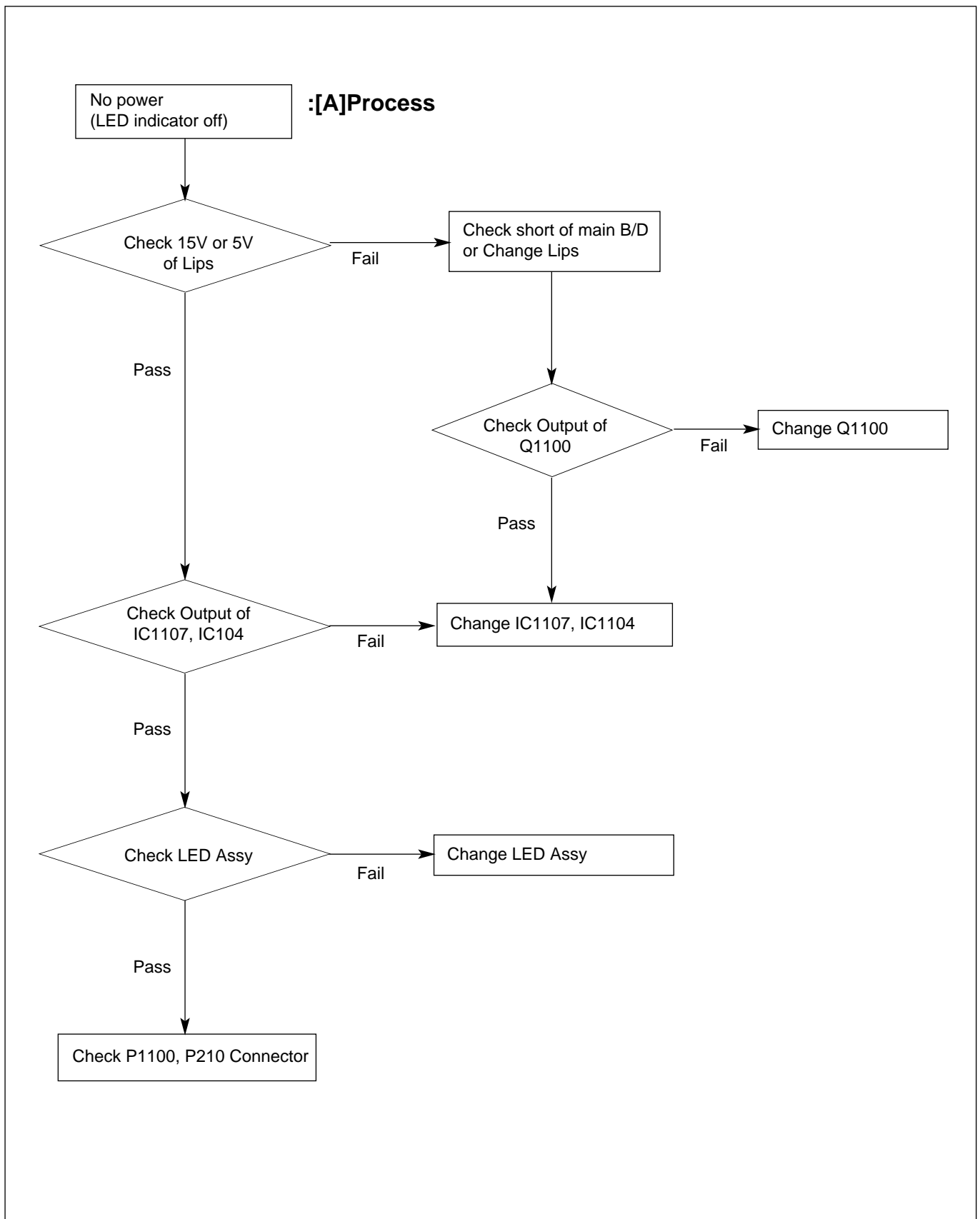
Figure 1. Cable Connection

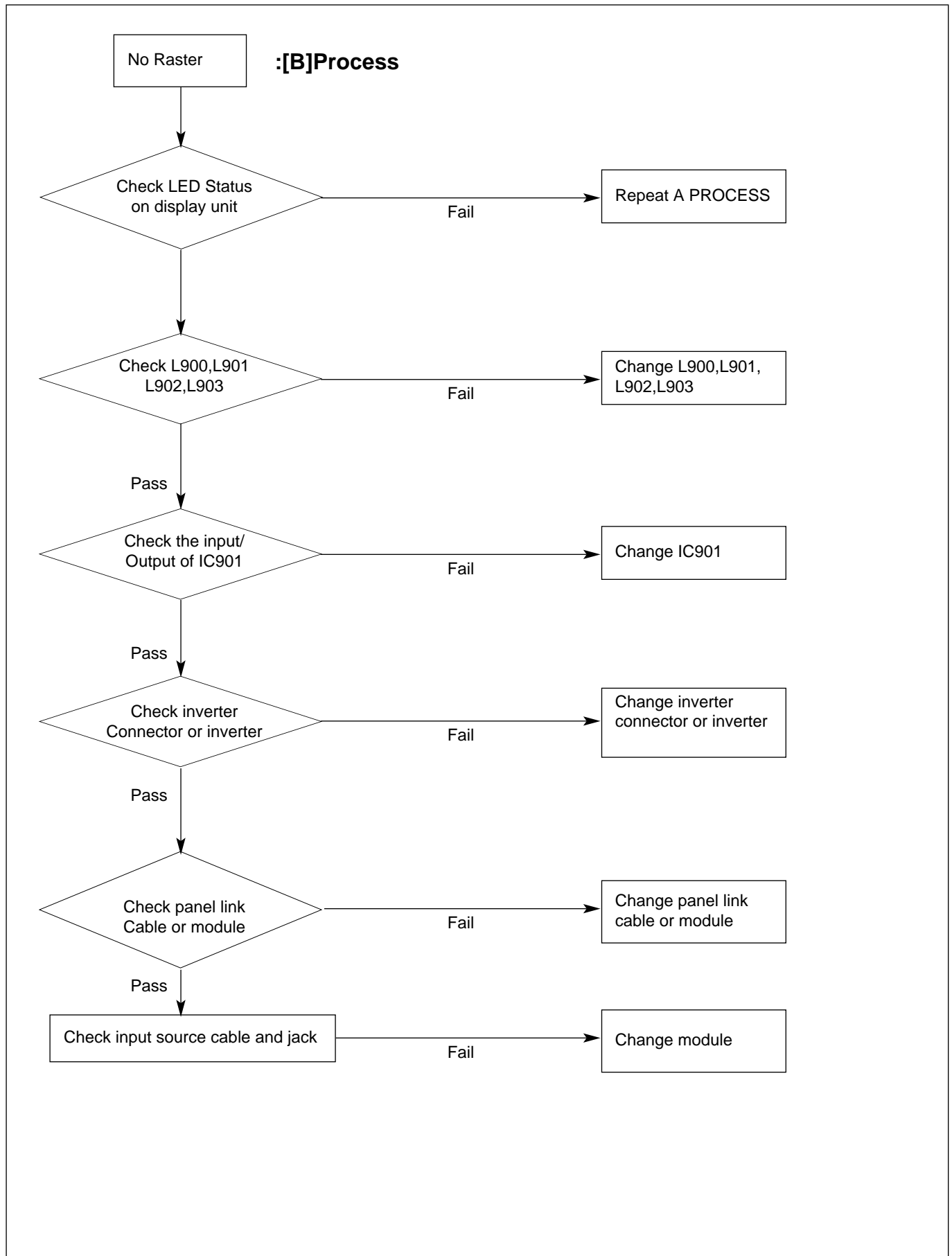
SVC REMOCON

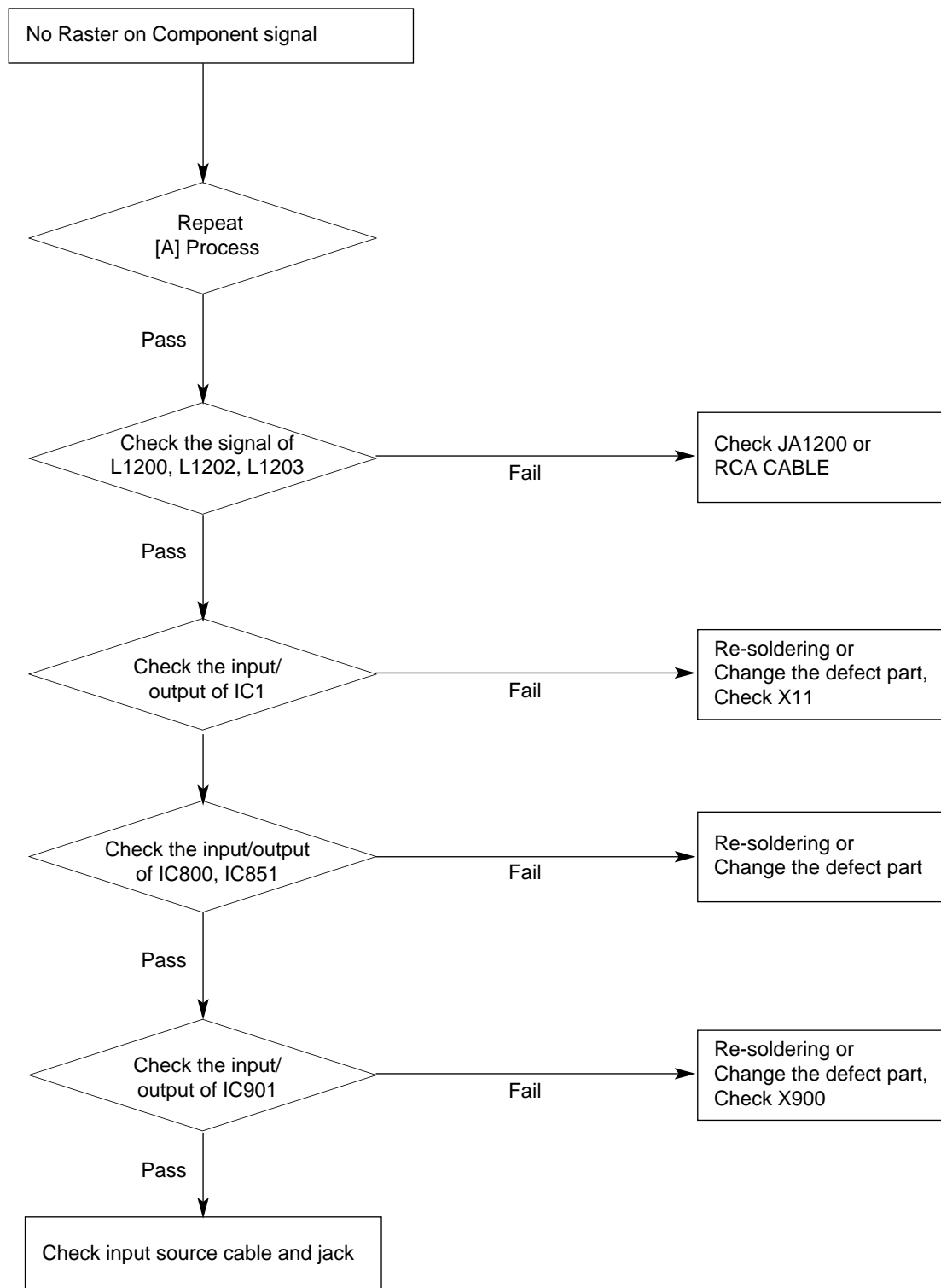
NO	KEY	FUNTION	REMARK
1	POWER	To turn the TV on or off	
2	POWER ON	To turn the TV on automatically if the power is supplied to the TV. (Use the POWER key to deactivate): It should be deactivated when delivered.	
3	MUTE	To activate the mute function.	
4	P-CHECK	To check TV screen image easily.	Shortcut keys
5	S-CHECK	To check TV screen sound easily	Shortcut keys
6	ARC	To select size of the main screen (Normal, Spectacle, Wide or Zoom)	Shortcut keys
7	CAPTION	Switch to closed caption broadcasting	
8	TXT	To toggle on/off the teletext mode	
9	TV/AV	To select an external input for the TV screen	
10	TURBO SOUND	To start turbo sound	
11	TURBO PICTURE	To start turbo picture	
12	IN-START	To enter adjustment mode when manufacturing the TV sets.	Use the AV key to enter the screen W/B adjustment mode.
		To adjust the screen voltage (automatic): In-start → mute → Adjust → AV(Enter into W/B adjustment mode)	
		W/B adjustment (automatic): After adjusting the screen →W/B adjustment →Exit two times (Adjustment completed)	
13	ADJ	To enter into the adjustment mode. To adjust horizontal line and sub-brightness.	
14	MPX	To select the multiple sound mode (Mono, Stereo or Foreign language)	
15	EXIT	To release the adjustment mode	
16	APC(PSM)	To easily adjust the screen according to surrounding brightness	
17	ASC(SSM)	To easily adjust sound according to the program type	
18	MULTIMIDIA	To check component input	Shortcut keys
19	FRONT-AV	To check the front AV	Shortcut keys
20	CH ±	To move channel up/down or to select a function displayed on the screen.	
21	VOL ±	To adjust the volume or accurately control a specific function.	
22	ENTER	To set a specific function or complete setting.	
23	PIP CH-(OP1)	To move the channel down in the PIP screen. To use as a red key in the teletext mode	
24	PIP CH+(OP2)	To move the channel in the PIP screen To use as a green key in the teletext mode	
25	PIP SWAP(OP3)	To switch between the main and sub screens To use as a yellow key in the teletext mode	
26	PIP INPUT(OP4)	To select the input status in the PIP screen To use as a blue key in the teletext mode	
27	EYE	To set a function that will automatically adjust screen status to match the surrounding brightness so natural color can be displayed.	
28	MENU	To select the functions such as video, voice, function or channel.	
29	IN-STOP	To set the delivery condition status after manufacturing the TV set.	
30	STILL	To halt the main screen in the normal mode, or the sub screen at the PIP screen. Used as a hold key in the teletext mode (Page updating is stopped.)	
31	TIME	Displays the teletext time in the normal mode Enables to select the sub code in the teletext mode	
32	SIZE	Used as the size key in the PIP screen in the normal mode Used as the size key in the teletext mode	
33	MULTI PIP	Used as the index key in the teletext mode (Top index will be displayed if it is the top text.)	
34	POSITION	To select the position of the PIP screen in the normal mode Used as the update key in the teletext mode (Text will be displayed if the current page is updated.)	
35	MODE	Used as Mode in the teletext mode	
36	PIP	To select the simultaneous screen	
37	TILT	To adjust screen tilt	Shortcut keys
38	0~9	To manually select the channel.	

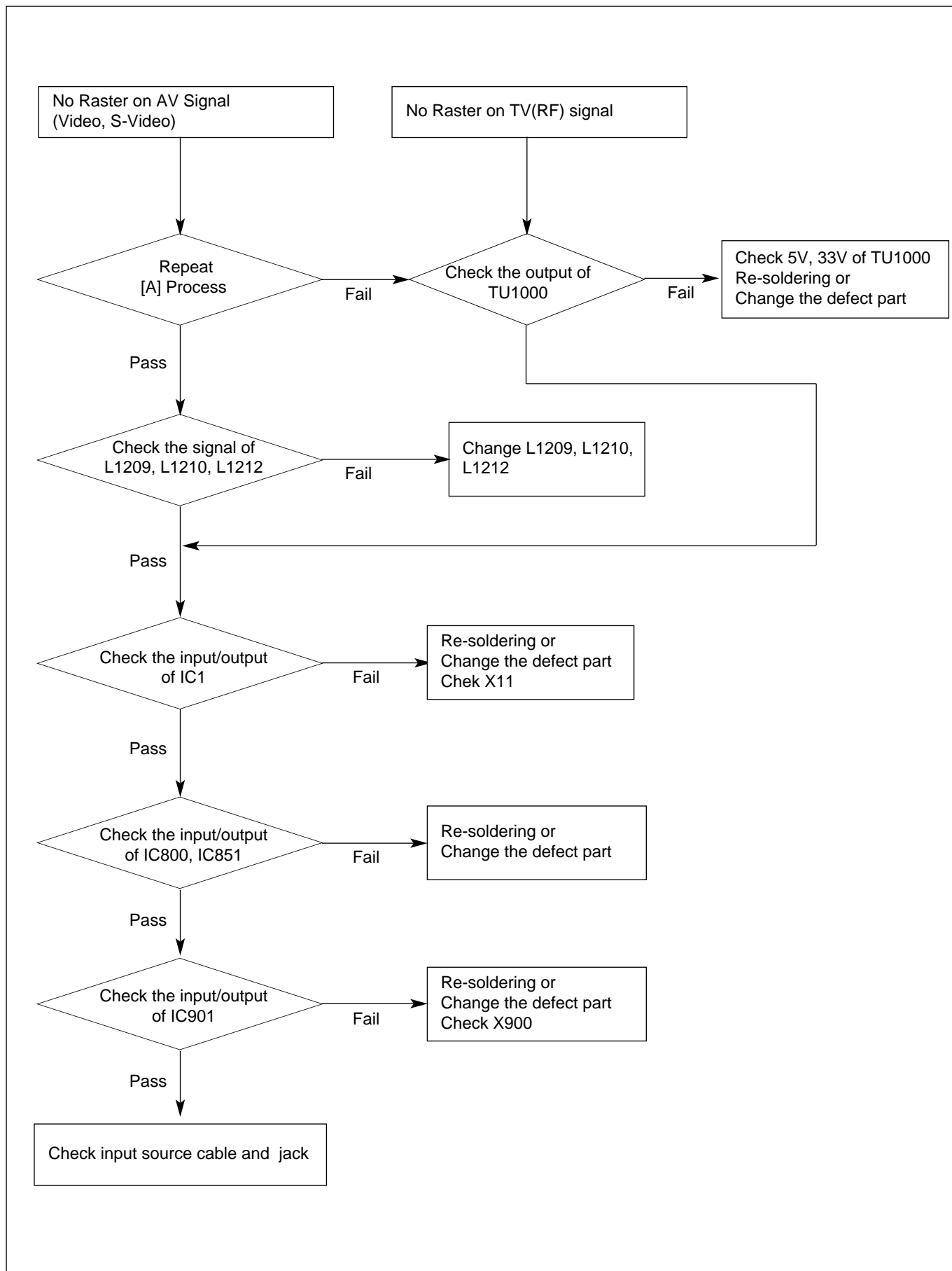


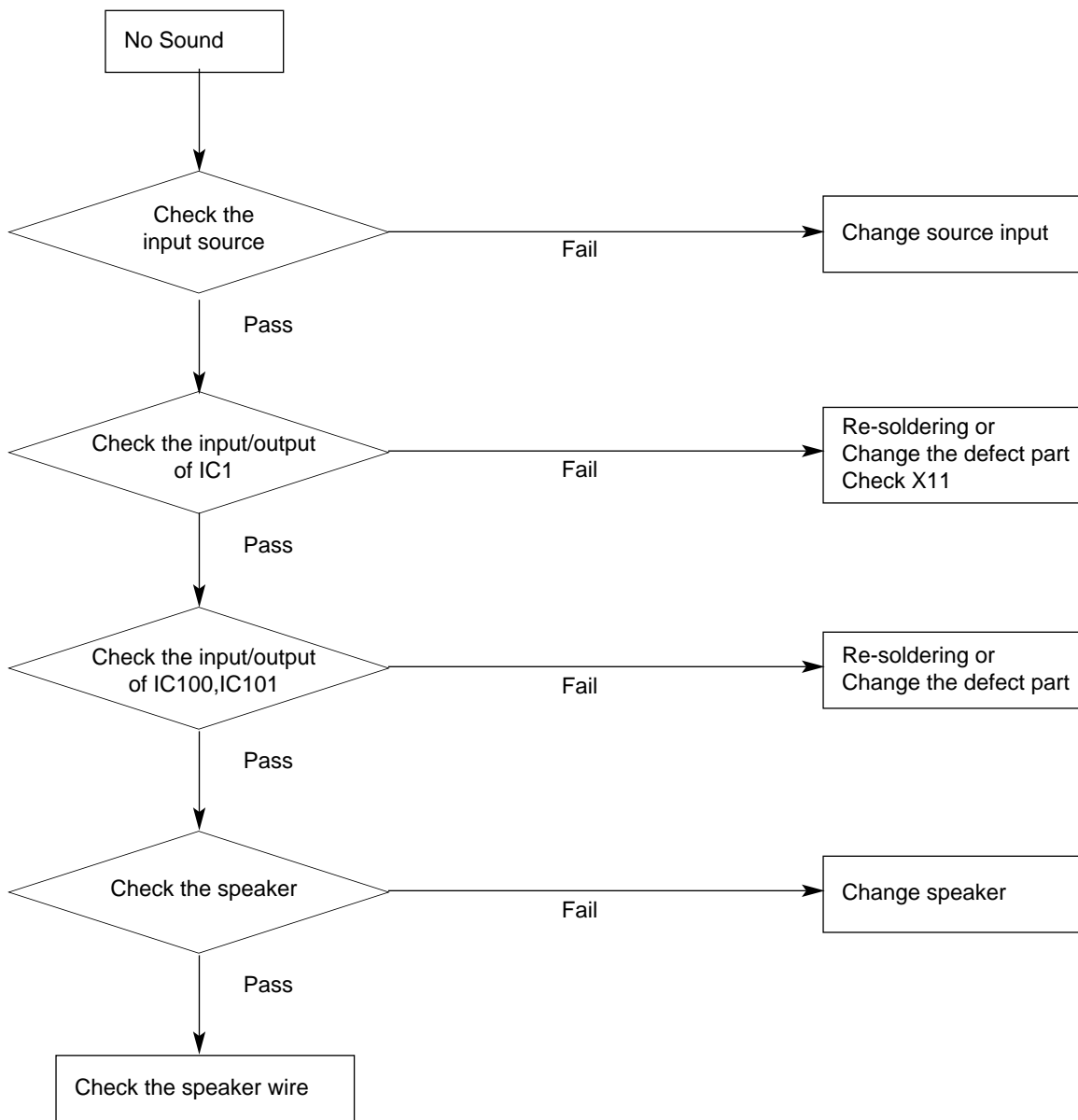
TROUBLESHOOTING



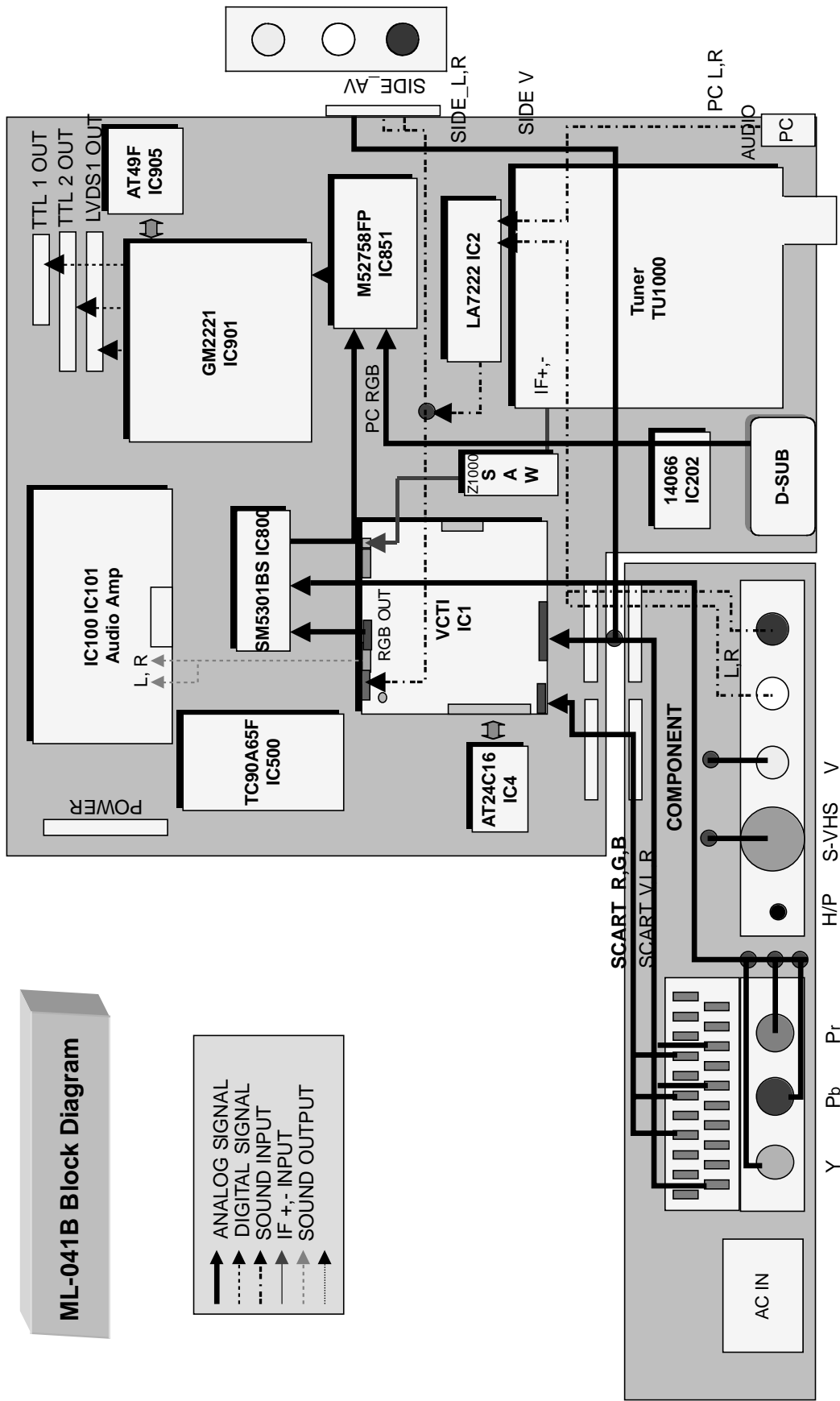








BLOCK DIAGRAM



ML-041B Block Diagram

BLOCK DIAGRAM DESCRIPTION

1. Video Controller Unit & Display Data Conversion Unit

The video controller unit receives the video signals inputted through the tuner, AV port (AV1, AV2, S-Video, component), and converts them into an analog RGB signal through the microcomputer (VCTI) combined with the video decoder that integrates various functions in one chip.

Either the analog RGB, component YPbPr or PC RGB signal is selected by the switching IC and inputted to a scaler (GM2221), which is sent to the LCD module after being modified to an LVDS signal through the integrated LVDS IC.

Or, it is sent to the LCD module as a TTL output.

VCTi is the main microprocessor that handles video signal processing and sound signal processing. It also manages the RF signals received from the tuner.

The scaler can control timing to fit into the LCD panel, and can also control the size and position of the input signal.

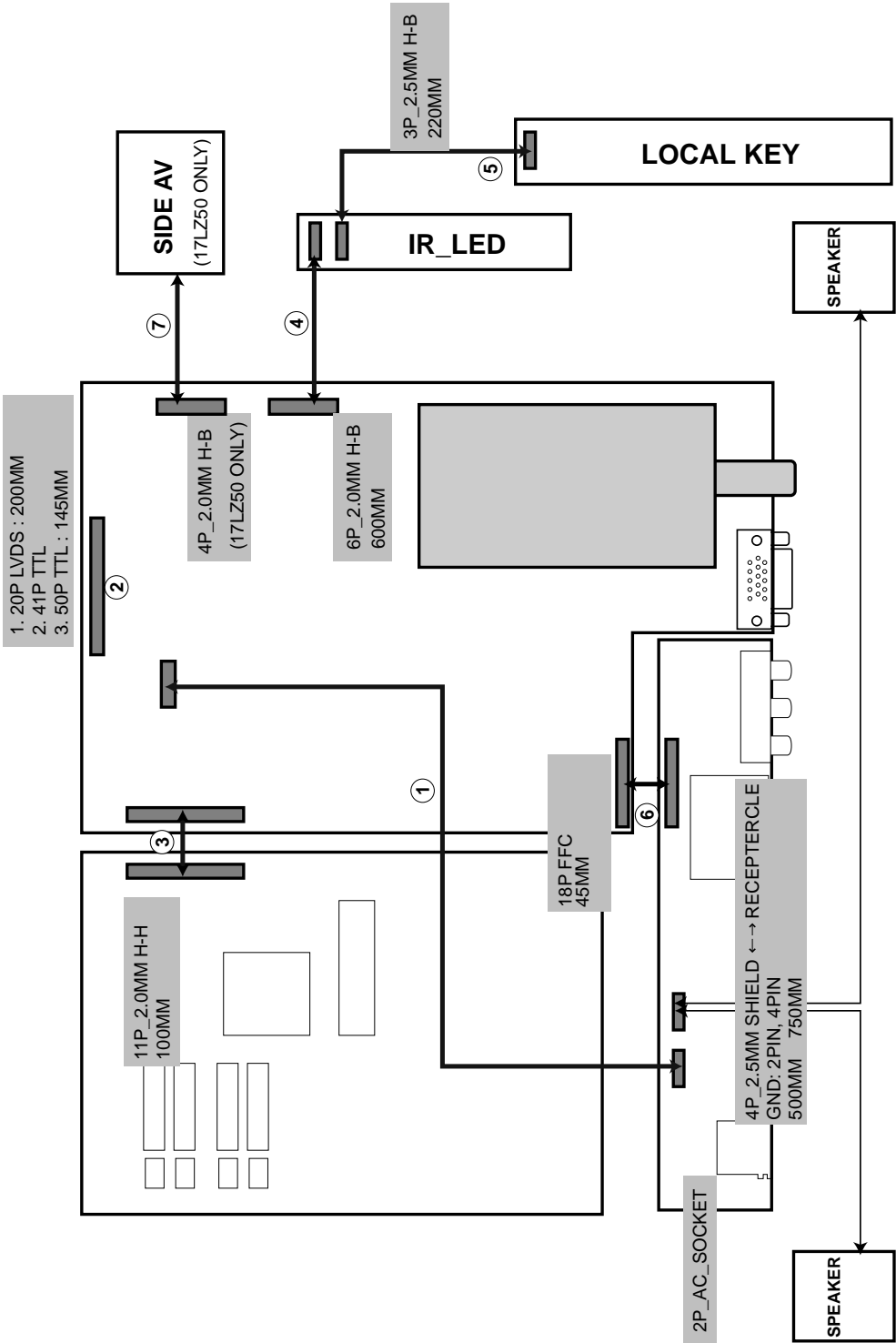
2. Power Supply Unit

The power supply unit provides 15V and 5V DC power to the mainboard.

The PWM Step-Up DC/DC Converter circuit is used to generate the 33V used for the tuner.

15V power is directly used by the sound amplifier IC and is also used to generate 5V power through the regulator. 12V power is used for the LCD panel power, and 5V power is converted to 3.3V and 1.8V power through the regulator, which in turn supplies electrical power for ICs such as VCTI and scaler.

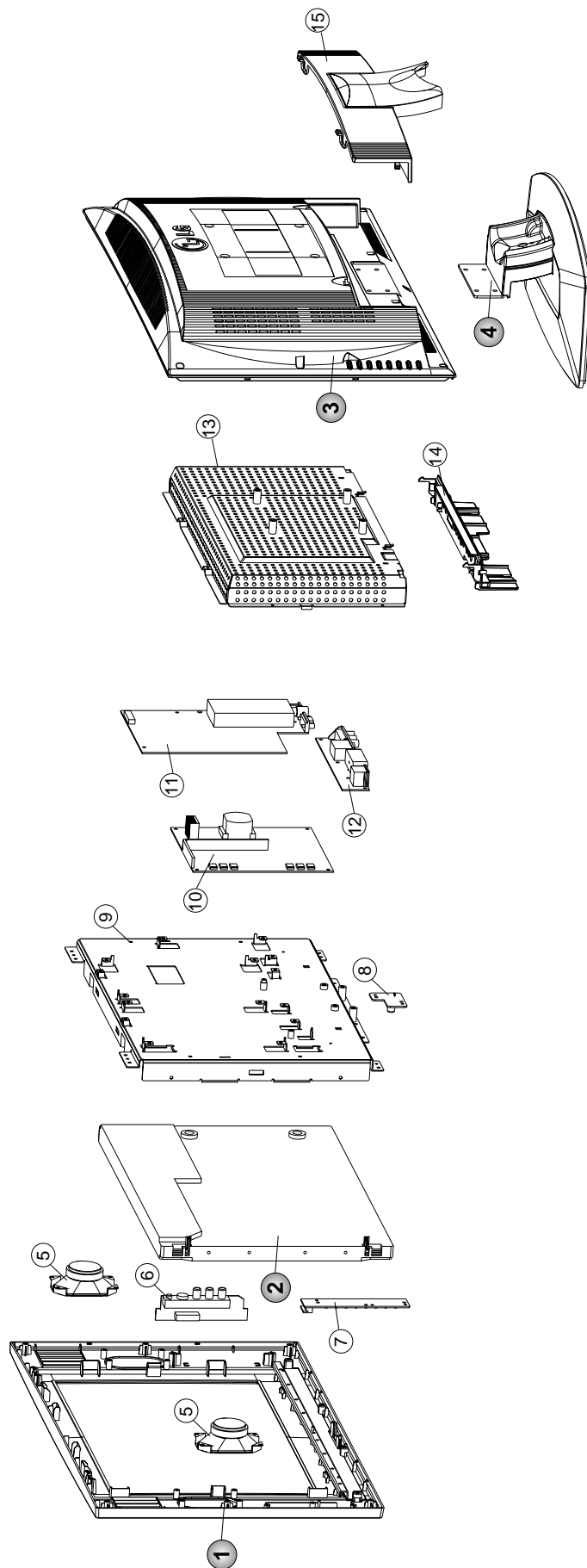
WIRING DIAGRAM



Wiring Part List

No.	Part No.
1	6631T25019Y
2	6631T11012R
3	6631T20028G
4	6631T20029X
5	6631T25021C
6	6631T11017R
7	6631T220033L

EXPLODED VIEW



EXPLODED VIEW PARTS LIST

No.	PART NO.	DESCRIPTION
1	3091TKC120A	CABINET ASSEMBLY RZ-17LZ50 BRAND 3090TKC092 ML-041B
	3091TKC120B	CABINET ASSEMBLY RZ-17LZ50 BRAND 3090TKC092 ML-041B C/SKD
2	6306V17001B	LCD(LIQUID CRYSTAL DISPLAY), LC171W03-A4K4 LG PHILPS TFT COLOR
	or 6304FLP140A	LCD(LIQUID CRYSTAL DISPLAY), LC171W03-A4K7 LG PHILPS TFT COLOR 17.1W,SS D-IC,IMAGE STICKING IMPROVEMENT,450NITS,25MS,6LAMP
3	3809TKC061E	BACK COVER ASSEMBLY, RZ-17LZ50 3808TKC051 ML-041B CIS
	3809TKC061B	BACK COVER ASSEMBLY, RZ-17LZ50 3808TKC051 ML-041B C/SKD
4	3043TKK179A	TILT SWIVEL ASSEMBLY, RZ-17LZ50 NON LCD TV
	3043TKK179B	TILT SWIVEL ASSEMBLY, RZ-17LZ50 NON LCD TV C/SKD
5	6400GKTX01C	SPEAKER,FULLRANGE, F1527C-6428-4 K-TONE FULL-RANGE(GENERAL) 4 OHM 7/12W 85DB OTHERS 40*70MM TRACK TYPE
6	6871TST618A	PWB(PCB) ASSEMBLY,SUB, RZ-17LZ50 ML-041B SUB TOTAL BRAND SIDE_AV ASSY
7	6871TST616A	PWB(PCB) ASSEMBLY,SUB, RZ-17LZ50 ML-041B CONTROL TOTAL BRAND CONTROL BOARD ASSY
8	6871TST617B	PWB(PCB) ASSEMBLY, SUB, RZ-17LZ50 ML-041B SUB TOTAL BRAND IR B/D ASSY VER 1.1
9	4951TKS154B	METAL ASSEMBLY, FRAME ML-041B 17LZ50
	4951TKS154C	METAL ASSEMBLY, FRAME ML-041B RZ-17LZ50 C/AKD
10	6871TPT280C	PWB(PCB) ASSEMBLY,POWER, 17RZ40 POWER TOTAL LIEN CHANG LIPS FOR LPL 17" WIDE
11	3313TP1012A	MAIN TOTAL ASSEMBLY, RZ-17LZ50 LPL BRAND ML-041B
12	6871TST727A	PWB(PCB) ASSEMBLY,SUB, RZ-15LA66 ML-041BSUB TOTAL BRAND SCART JACK ASSY
13	4951TKK173A	METAL ASSEMBLY, REAR SHIELD ML-041B RZ-17LZ50
	4951TKK173B	METAL ASSEMBLY, REAR SHIELD ML-041B RZ-17LZ50 C/SKD
14	3551TKK529A	COVER ASSEMBLY, RZ-17LZ50 REAR SCART A/V ML-041B
15	3550TKK543A	COVER, 17LZ50 REAR AV

REPLACEMENT PARTS LIST

For Capacitor & Resistors, the characters at 2nd and 3rd digit in the P/No. means as follows;

CC, CX, CK, CN, CH : Ceramic
CQ : Polyester
CE : Electrolytic
CF : Fixed Film

RD : Carbon Film
RS : Metal Oxide Film
RN : Metal Film
RH : CHIP, Metal Glazed(Chip)
RR : Drawing

DATE: 2004. 06. 25.				
*S	*AL	LOC. NO.	PART NO.	DESCRIPTION / SPECIFICATION
MAIN BOARD				
CAPACITOR				
		C1008	0CE227CF638	"220UF SHL,SD 16V M FM5 TP 5"
		C1101	0CE227BH638	220U KME 25V M FM5 TP5
		C1104	0CE227BH638	220U KME 25V M FM5 TP5
		C1107	0CE477BH618	470UF KME TYPE 25V M FL TP 5
		C1140	0CE227BH638	220U KME 25V M FM5 TP5
		C1152	0CE107BK638	100UF KME 50V M FM5 TP5
		C123	0CE477BH618	470UF KME TYPE 25V M FL TP 5
		C124	0CE477BH618	470UF KME TYPE 25V M FL TP 5
		C131	0CE477BH618	470UF KME TYPE 25V M FL TP 5
		C132	0CE477BH618	470UF KME TYPE 25V M FL TP 5
		C133	0CE477BH618	470UF KME TYPE 25V M FL TP 5
		C134	0CE477BH618	470UF KME TYPE 25V M FL TP 5
		C1150	0CH3105F946	1UF 16V Z F 2012 R/TP
		C1151	0CH3104K946	100000PF 50V Z F 2012 R/TP
		C127	0CH3104K946	100000PF 50V Z F 2012 R/TP
		C128	0CH3104K946	100000PF 50V Z F 2012 R/TP
		C135	0CH3104K946	100000PF 50V Z F 2012 R/TP
		C136	0CH3104K946	100000PF 50V Z F 2012 R/TP
		C15	0CH3104K946	100000PF 50V Z F 2012 R/TP
		C16	0CH3104K946	100000PF 50V Z F 2012 R/TP
		C19	0CH3104K946	100000PF 50V Z F 2012 R/TP
		C203	0CH3104K946	100000PF 50V Z F 2012 R/TP
		C4	0CH3104K946	100000PF 50V Z F 2012 R/TP
		C41	0CH3104K946	100000PF 50V Z F 2012 R/TP
		C44	0CH3104K946	100000PF 50V Z F 2012 R/TP
		C49	0CH3104K946	100000PF 50V Z F 2012 R/TP
		C6	0CH3104K946	100000PF 50V Z F 2012 R/TP
		C803	0CH3105F946	1UF 16V Z F 2012 R/TP
		C804	0CH3104K946	100000PF 50V Z F 2012 R/TP
		C808	0CH3104K946	100000PF 50V Z F 2012 R/TP
		C810	0CH3104K946	100000PF 50V Z F 2012 R/TP
		C812	0CH3105F946	1UF 16V Z F 2012 R/TP
		C851	0CH3104K946	100000PF 50V Z F 2012 R/TP
		C854	0CH3104K946	100000PF 50V Z F 2012 R/TP
		C855	0CH3104K946	100000PF 50V Z F 2012 R/TP
		C858	0CH3104K946	100000PF 50V Z F 2012 R/TP
		C863	0CH3104K946	100000PF 50V Z F 2012 R/TP
		C866	0CH3104K946	100000PF 50V Z F 2012 R/TP
		C867	0CH3104K946	100000PF 50V Z F 2012 R/TP
		C869	0CH3104K946	100000PF 50V Z F 2012 R/TP
		C871	0CH3104K946	100000PF 50V Z F 2012 R/TP
		C874	0CH3104K946	100000PF 50V Z F 2012 R/TP
		C877	0CH3104K946	100000PF 50V Z F 2012 R/TP
		C909	0CH3104K946	100000PF 50V Z F 2012 R/TP
		C910	0CH3104K946	100000PF 50V Z F 2012 R/TP
		C917	0CH3104K946	100000PF 50V Z F 2012 R/TP
		C920	0CH3104K946	100000PF 50V Z F 2012 R/TP
		C925	0CH3104K946	100000PF 50V Z F 2012 R/TP
		C926	0CH3104K946	100000PF 50V Z F 2012 R/TP
		C927	0CH3104K946	100000PF 50V Z F 2012 R/TP
		C928	0CH3104K946	100000PF 50V Z F 2012 R/TP
		C929	0CH3104K946	100000PF 50V Z F 2012 R/TP
		C930	0CH3104K946	100000PF 50V Z F 2012 R/TP
		C934	0CH3104K946	100000PF 50V Z F 2012 R/TP

DATE: 2004. 06. 25.				
*S	*AL	LOC. NO.	PART NO.	DESCRIPTION / SPECIFICATION
		C935	0CH3104K946	100000PF 50V Z F 2012 R/TP
		C936	0CH3104K946	100000PF 50V Z F 2012 R/TP
		C937	0CH3104K946	100000PF 50V Z F 2012 R/TP
		C938	0CH3104K946	100000PF 50V Z F 2012 R/TP
		C939	0CH3104K946	100000PF 50V Z F 2012 R/TP
		C940	0CH3104K946	100000PF 50V Z F 2012 R/TP
		C943	0CH3104K946	100000PF 50V Z F 2012 R/TP
		C944	0CH3104K946	100000PF 50V Z F 2012 R/TP
		C945	0CH3104K946	100000PF 50V Z F 2012 R/TP
		C946	0CH3104K946	100000PF 50V Z F 2012 R/TP
		C947	0CH3104K946	100000PF 50V Z F 2012 R/TP
		C948	0CH3104K946	100000PF 50V Z F 2012 R/TP
		C949	0CH3104K946	100000PF 50V Z F 2012 R/TP
		C950	0CH3104K946	100000PF 50V Z F 2012 R/TP
		C956	0CH3104K946	100000PF 50V Z F 2012 R/TP
		C964	0CH3104K946	100000PF 50V Z F 2012 R/TP
		C965	0CH3104K946	100000PF 50V Z F 2012 R/TP
		C967	0CH3104K946	100000PF 50V Z F 2012 R/TP
		C968	0CH3104K946	100000PF 50V Z F 2012 R/TP
		C970	0CH3104K946	100000PF 50V Z F 2012 R/TP
		C13	0CH6102K406	1000PF 50V J SL 2012 R/TP
		C14	0CH6102K406	1000PF 50V J SL 2012 R/TP
		C2	0CH6102K406	1000PF 50V J SL 2012 R/TP
		C20	0CH6102K406	1000PF 50V J SL 2012 R/TP
		C21	0CH6102K406	1000PF 50V J SL 2012 R/TP
		C46	0CH6102K406	1000PF 50V J SL 2012 R/TP
		C50	0CH6102K406	1000PF 50V J SL 2012 R/TP
		C59	0CH6102K406	1000PF 50V J SL 2012 R/TP
		C7	0CH6221K416	220PF 50V J NP0 2012 R/TP
		C8	0CH6221K416	220PF 50V J NP0 2012 R/TP
		C9	0CH6221K416	220PF 50V J NP0 2012 R/TP
		C923	0CH6050K116	5PF 50V D NP0 2012 R/TP
		C924	0CH6050K116	5PF 50V D NP0 2012 R/TP
		C129	181-007F	"MPE ECQ-V1H224JL3(TR), 50V 0"
		C130	181-007F	"MPE ECQ-V1H224JL3(TR), 50V 0"
		C1003	0CH3103K516	10000PF 50V 10% B(Y5P) 2012
		C1007	0CH3103K516	10000PF 50V 10% B(Y5P) 2012
		C1010	0CK273DK51A	27000PF 2012 50V 10% B(Y5P)
		C1015	0CH5390K416	39PF 50V 5% NP0 2012 R/TP
		C1016	0CH5390K416	39PF 50V 5% NP0 2012 R/TP
		C107	0CK225DFK4A	"2.2UF 2012 16V 20%,-20% F(Y5)"
		C109	0CH3103K516	10000PF 50V 10% B(Y5P) 2012
		C110	0CH3103K516	10000PF 50V 10% B(Y5P) 2012
		C113	0CK225DFK4A	"2.2UF 2012 16V 20%,-20% F(Y5)"
		C900	0CH3103K516	10000PF 50V 10% B(Y5P) 2012
		C902	0CH3103K516	10000PF 50V 10% B(Y5P) 2012
		C1001	0CK103CK51A	0.01UF 1608 50V 10% R/TP B(Y
		C1002	0CK103CK51A	0.01UF 1608 50V 10% R/TP B(Y
		C1004	0CK103CK51A	0.01UF 1608 50V 10% R/TP B(Y
		C11	0CK104CK56A	0.1UF 1608 50V 10% R/TP X7R
		C114	0CK225DFK4A	"2.2UF 2012 16V 20%,-20% F(Y5)"
		C115	0CK104CK56A	0.1UF 1608 50V 10% R/TP X7R
		C116	0CK562CK51A	5600PF 1608 50V 10% R/TP B(Y
		C117	0CK562CK51A	5600PF 1608 50V 10% R/TP B(Y

DATE: 2004. 06.25.				
*S	*AL	LOC. NO.	PART NO.	DESCRIPTION / SPECIFICATION
		C118	0CK104CK56A	0.1UF 1608 50V 10% R/TP X7R
		C12	0CK104CK56A	0.1UF 1608 50V 10% R/TP X7R
		C125	0CK105EK56A	1UF 3216 50V 10% X7R R/TP
		C126	0CK105EK56A	1UF 3216 50V 10% X7R R/TP
		C200	0CK104CK56A	0.1UF 1608 50V 10% R/TP X7R
		C22	0CK822CK56A	8200PF 1608 50V 10% X7R R/TP
		C23	0CK104CK56A	0.1UF 1608 50V 10% R/TP X7R
		C24	0CK822CK56A	8200PF 1608 50V 10% X7R R/TP
		C25	0CK104CK56A	0.1UF 1608 50V 10% R/TP X7R
		C26	0CK104CK56A	0.1UF 1608 50V 10% R/TP X7R
		C27	0CK104CK56A	0.1UF 1608 50V 10% R/TP X7R
		C28	0CK334CF94A	"0.33UF 1608 16V 80%,-20% F(Y"
		C29	0CK104CK56A	0.1UF 1608 50V 10% R/TP X7R
		C3	0CK104CK56A	0.1UF 1608 50V 10% R/TP X7R
		C30	0CK334CF94A	"0.33UF 1608 16V 80%,-20% F(Y"
		C31	0CK104CK56A	0.1UF 1608 50V 10% R/TP X7R
		C32	0CK334CF94A	"0.33UF 1608 16V 80%,-20% F(Y"
		C33	0CK334CF94A	"0.33UF 1608 16V 80%,-20% F(Y"
		C34	0CK104CK56A	0.1UF 1608 50V 10% R/TP X7R
		C35	0CK334CF94A	"0.33UF 1608 16V 80%,-20% F(Y"
		C37	0CK334CF94A	"0.33UF 1608 16V 80%,-20% F(Y"
		C40	0CK104CK56A	0.1UF 1608 50V 10% R/TP X7R
		C42	0CK104CK56A	0.1UF 1608 50V 10% R/TP X7R
		C45	0CK104CK56A	0.1UF 1608 50V 10% R/TP X7R
		C52	0CK104CK56A	0.1UF 1608 50V 10% R/TP X7R
		C67	0CK104CK56A	0.1UF 1608 50V 10% R/TP X7R
		C75	0CK104CK56A	0.1UF 1608 50V 10% R/TP X7R
		C800	0CK105CF94A	"1UF 1608 16V 80%,-20% R/TP F"
		C801	0CK105CF94A	"1UF 1608 16V 80%,-20% R/TP F"
		C802	0CK105CF94A	"1UF 1608 16V 80%,-20% R/TP F"
		C807	0CK104CK56A	0.1UF 1608 50V 10% R/TP X7R
		C811	0CK105CF94A	"1UF 1608 16V 80%,-20% R/TP F"
		C816	0CK104CK56A	0.1UF 1608 50V 10% R/TP X7R
		C82	0CK104CK56A	0.1UF 1608 50V 10% R/TP X7R
		C861	0CK104CK56A	0.1UF 1608 50V 10% R/TP X7R
		C865	0CK104CK56A	0.1UF 1608 50V 10% R/TP X7R
		C875	0CK104CK56A	0.1UF 1608 50V 10% R/TP X7R
		C901	0CK103CK51A	0.01UF 1608 50V 10% R/TP B(Y
		C903	0CK103CK51A	0.01UF 1608 50V 10% R/TP B(Y
		C904	0CK103CK51A	0.01UF 1608 50V 10% R/TP B(Y
		C905	0CK103CK51A	0.01UF 1608 50V 10% R/TP B(Y
		C906	0CK103CK51A	0.01UF 1608 50V 10% R/TP B(Y
		C911	0CK104CK56A	0.1UF 1608 50V 10% R/TP X7R
		C912	0CK104CK56A	0.1UF 1608 50V 10% R/TP X7R
		C913	0CK104CK56A	0.1UF 1608 50V 10% R/TP X7R
		C914	0CK104CK56A	0.1UF 1608 50V 10% R/TP X7R
		C915	0CK104CK56A	0.1UF 1608 50V 10% R/TP X7R
		C916	0CK104CK56A	0.1UF 1608 50V 10% R/TP X7R
		C918	0CK104CK56A	0.1UF 1608 50V 10% R/TP X7R
		C919	0CK104CK56A	0.1UF 1608 50V 10% R/TP X7R
		C921	0CK104CK56A	0.1UF 1608 50V 10% R/TP X7R
		C922	0CK104CK56A	0.1UF 1608 50V 10% R/TP X7R
		C961	0CK104CK56A	0.1UF 1608 50V 10% R/TP X7R
		C121	0CC100CK41A	10PF 1608 50V 5% R/TP NP0
		C122	0CC100CK41A	10PF 1608 50V 5% R/TP NP0
		C43	0CC102CK41A	1000PF 1608 50V 5% R/TP NP0
		C47	0CC220CK41A	22PF 1608 50V 5% R/TP NP0
		C48	0CC220CK41A	22PF 1608 50V 5% R/TP NP0
		C53	0CC102CK41A	1000PF 1608 50V 5% R/TP NP0
		C56	0CC221CK41A	220PF 1608 50V 5% R/TP NP0
		C57	0CC221CK41A	220PF 1608 50V 5% R/TP NP0
		C58	0CC221CK41A	220PF 1608 50V 5% R/TP NP0

DATE: 2004. 06.25.				
*S	*AL	LOC. NO.	PART NO.	DESCRIPTION / SPECIFICATION
		C74	0CC102CK41A	1000PF 1608 50V 5% R/TP NP0
		C83	0CC102CK41A	1000PF 1608 50V 5% R/TP NP0
		C85	0CC102CK41A	1000PF 1608 50V 5% R/TP NP0
		C86	0CC102CK41A	1000PF 1608 50V 5% R/TP NP0
		C88	0CC390CK41A	39PF 1608 50V 5% R/TP NP0
		C889	0CC331CK41A	330PF 1608 50V 5% R/TP NP0
		C89	0CC390CK41A	39PF 1608 50V 5% R/TP NP0
		C890	0CC331CK41A	330PF 1608 50V 5% R/TP NP0
		C891	0CC331CK41A	330PF 1608 50V 5% R/TP NP0
		C1	0CE107WF6DC	100UF MVK 16V 20% R/TP(SMD)
		C1106	0CE477BD618	470UF KME TYPE 10V 20% FL TP
		C108	0CE476VH6DC	47UF MV 25V 20% R/TP(SMD) SM
		C1102	0CE107WF6DC	100UF MVK 16V 20% R/TP(SMD)
		C1103	0CE107WF6DC	100UF MVK 16V 20% R/TP(SMD)
		C1109	0CE107WF6DC	100UF MVK 16V 20% R/TP(SMD)
		C111	0CE475WJ6DC	4.7UF MVK 35V 20% R/TP(SMD)
		C1118	0CE107WF6DC	100UF MVK 16V 20% R/TP(SMD)
		C112	0CE475WJ6DC	4.7UF MVK 35V 20% R/TP(SMD)
		C1124	0CE107WF6DC	100UF MVK 16V 20% R/TP(SMD)
		C1130	0CE107WF6DC	100UF MVK 16V 20% R/TP(SMD)
		C1132	0CE107WF6DC	100UF MVK 16V 20% R/TP(SMD)
		C1134	0CE227WF6DC	220UF MVK 16V 20% R/TP(SMD)
		C1135	0CE107WF6DC	100UF MVK 16V 20% R/TP(SMD)
		C1137	0CE107WF6DC	100UF MVK 16V 20% R/TP(SMD)
		C1149	0CE107WF6DC	100UF MVK 16V 20% R/TP(SMD)
		C119	0CH8106F691	10UF 16V 20% 105STD (CYL) R/
		C120	0CH8106F691	10UF 16V 20% 105STD (CYL) R/
		C17	0CE475WJ6DC	4.7UF MVK 35V 20% R/TP(SMD)
		C5	0CE475WJ6DC	4.7UF MVK 35V 20% R/TP(SMD)
		C55	0CE475VK6DC	4.7UF MV 50V 20% R/TP(SMD) S
		C60	0CE475VK6DC	4.7UF MV 50V 20% R/TP(SMD) S
		C61	0CE475VK6DC	4.7UF MV 50V 20% R/TP(SMD) S
		C62	0CE475VK6DC	4.7UF MV 50V 20% R/TP(SMD) S
		C852	0CH8476F691	47UF 16V 20% 105STD (CYL) R/
		C856	0CH8476F691	47UF 16V 20% 105STD (CYL) R/
		C859	0CH8476F691	47UF 16V 20% 105STD (CYL) R/
		C864	0CH8476F691	47UF 16V 20% 105STD (CYL) R/
		C868	0CH8476F691	47UF 16V 20% 105STD (CYL) R/
		C87	0CE107WF6DC	100UF MVK 16V 20% R/TP(SMD)
		C873	0CH8476F691	47UF 16V 20% 105STD (CYL) R/
		C876	0CH8106F691	10UF 16V 20% 105STD (CYL) R/
		C888	0CE107WF6DC	100UF MVK 16V 20% R/TP(SMD)
DIODES				
		D100	0DRFC00288A	SS14 FAIR CHILD R/TP SMA 20-
		D101	0DRFC00288A	SS14 FAIR CHILD R/TP SMA 20-
		D1150	0DRGS00199A	UF4001 GENERAL SEMICONDUCTOR
		D102	0DS181009AA	KDS181 TP KEC SOT-23 80V 3
		D103	0DS181009AA	KDS181 TP KEC SOT-23 80V 3
		D107	0DS226009AA	KDS226 TP KEC SOT-23 80V 30
		ZD104	0DZ620009HB	UDZ S 6.2B TP ROHM SOD323 20
		ZD105	0DZ620009HB	UDZ S 6.2B TP ROHM SOD323 20
		ZD207	0DZ510009EE	UDZ S 5.1B TP ROHM-K SOD323
		ZD208	0DZ510009EE	UDZ S 5.1B TP ROHM-K SOD323
		ZD209	0DZ510009EE	UDZ S 5.1B TP ROHM-K SOD323
		ZD211	0DZ510009EE	UDZ S 5.1B TP ROHM-K SOD323
		ZD200	0DZ510009EE	UDZ S 5.1B TP ROHM-K SOD323
		ZD201	0DZ510009EE	UDZ S 5.1B TP ROHM-K SOD323
		ZD202	0DZ510009EE	UDZ S 5.1B TP ROHM-K SOD323
		ZD203	0DZ510009EE	UDZ S 5.1B TP ROHM-K SOD323
		ZD204	0DZ510009EE	UDZ S 5.1B TP ROHM-K SOD323

DATE: 2004. 06.25.					
*S	*AL	LOC. NO.	PART NO.	DESCRIPTION / SPECIFICATION	
		ZD205 ZD206 D1151	0DZ510009EE 0DZ510009EE 0DZ330009DF	UDZ S 5.1B TP ROHM-K SOD323 UDZ S 5.1B TP ROHM-K SOD323 MTZJ33B TP ROHM-K DO34 0.5W	
IC					
		IC905 IC3 IC2 IC200 IC4 IC903 IC100 IC101 IC851 IC202 IC1 IC901 IC1101 IC1103 IC1108 IC1111 IC1112 IC1105 IC1106 IC1114 IC1115 IC1110 IC1113	0IZZTSA005A 0IKE702700D 0ISA722200A 0IMMRS036A 0IMCRAL006A 0IMCRAL006A 0IMCRM2002A 0IMCRMZ002A 0IMCRMIO06A 0IMO140662A 0IPRPMN003C 0IPRPGN015A 0IPMGFA061A 0IPMGSG018D 0IMCRKE010A 0IMCRFA015A 0IMCRKE010A 0IPMGFA061A 0IPMGSG018D 0IPMGFA061A 0IPMGFA061A 0ISS780800J 0ISS780800J	ML-041B XGA PAL ATMEL 32P PL "KIA7027AF 3, SOT-89 TP RESET" LA7222 (1280 AUDIO) - - - "M24C02-WMN6T SGS-THOMSON 8P," AT24C16AN-10SI-2.7 ATMEL 8P AT24C16AN-10SI-2.7 ATMEL 8P MP7720 MONOLITHIC POWER SYST MP7720 MONOLITHIC POWER SYST "M52758FP MITSUBISHI 36PIN, R" "MC14066BDR2 14P,SOIC TP BILA" VCT49XYF C7(NTSC+PAL) MICRON "GM2221 GENESIS 208P,QFP TRAY" "FAN1587AD33X FAIRCHILD 3P,DP" "LD1086DT18TR SGS-THOMSON 3P," KIA7812AF KEC 2P DPACK R/TP KA7805R FAIRCHILD 2P D-PAK R KIA7812AF KEC 2P DPACK R/TP "FAN1587AD33X FAIRCHILD 3P,DP" "LD1086DT18TR SGS-THOMSON 3P," "FAN1587AD33X FAIRCHILD 3P,DP" "FAN1587AD33X FAIRCHILD 3P,DP" "KA78M08R 3P,D-PAK TP VOL. RE" "KA78M08R 3P,D-PAK TP VOL. RE"	
COIL & CORE & INDUCTOR					
		L104 L105 L1150 L1100 L1101 L1103 L1104 L1105 L1106 L1107 L200 L201 L202 L203 L204 L853 L900 L901 L902 L903 L905 L1102 L205 L800 L906 L908 L10 L1001 L1002 L15	6140TBZ045A 6140TBZ045A 150-985B 6210TCE001G 6210TCE001G 6210TCE001A 6210TCE001A 6210TCE001G 6210TCE001G 6210TCE001G 6210TCE001A 6210TCE001A 6210TCE001A 6210TCE001A 6210TCE001G 6210TCE001G 6210TCE001G 6210TCE001G 6210TCE001G 6210TCE001G 6210TCE001A 6210TCE001G 6210TCE001A 6210TCE001G 6210TCE001G 6210TCE001G 6210TCE001G 6210TCE001G 0LC1032101A 0LC1020101A 0LC1032101A 0LC1032101A	"38.5UH(DIP), 6A, P7.5, DR8.3" "38.5UH(DIP), 6A, P7.5, DR8.3" DR8*11 2.4MH 0.16MM 270.5T HH-1M3216-501 CERATEC 3216MM HH-1M3216-501 CERATEC 3216MM HB-1S2012-080JT CERATEC 2012 HB-1S2012-080JT CERATEC 2012 HH-1M3216-501 CERATEC 3216MM HH-1M3216-501 CERATEC 3216MM HH-1M3216-501 CERATEC 3216MM HB-1S2012-080JT CERATEC 2012 HB-1S2012-080JT CERATEC 2012 HB-1S2012-080JT CERATEC 2012 HH-1M3216-501 CERATEC 3216MM HH-1M3216-501 CERATEC 3216MM HH-1M3216-501 CERATEC 3216MM HH-1M3216-501 CERATEC 3216MM HH-1M3216-501 CERATEC 3216MM HH-1M3216-501 CERATEC 3216MM HH-1S2012-080JT CERATEC 2012 HH-1M3216-501 CERATEC 3216MM HB-1S2012-080JT CERATEC 2012 HH-1M3216-501 CERATEC 3216MM HH-1M3216-501 CERATEC 3216MM HH-1M3216-501 CERATEC 3216MM 10UH 10% 3216 R/TC FI-C3216- 1UH 10% 2012 R/TC FI-B2012-1 10UH 10% 3216 R/TC FI-C3216- 10UH 10% 3216 R/TC FI-C3216-	

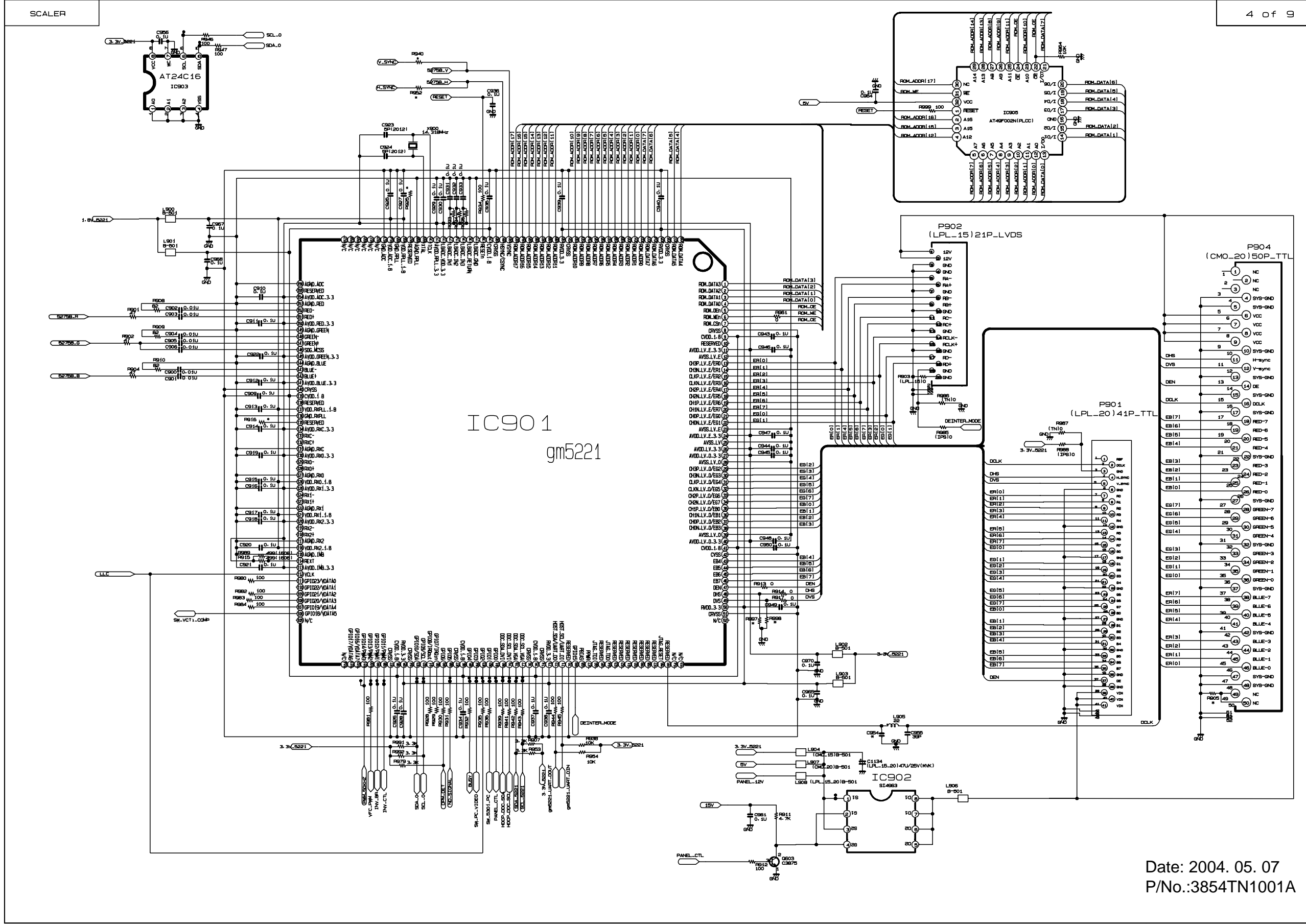
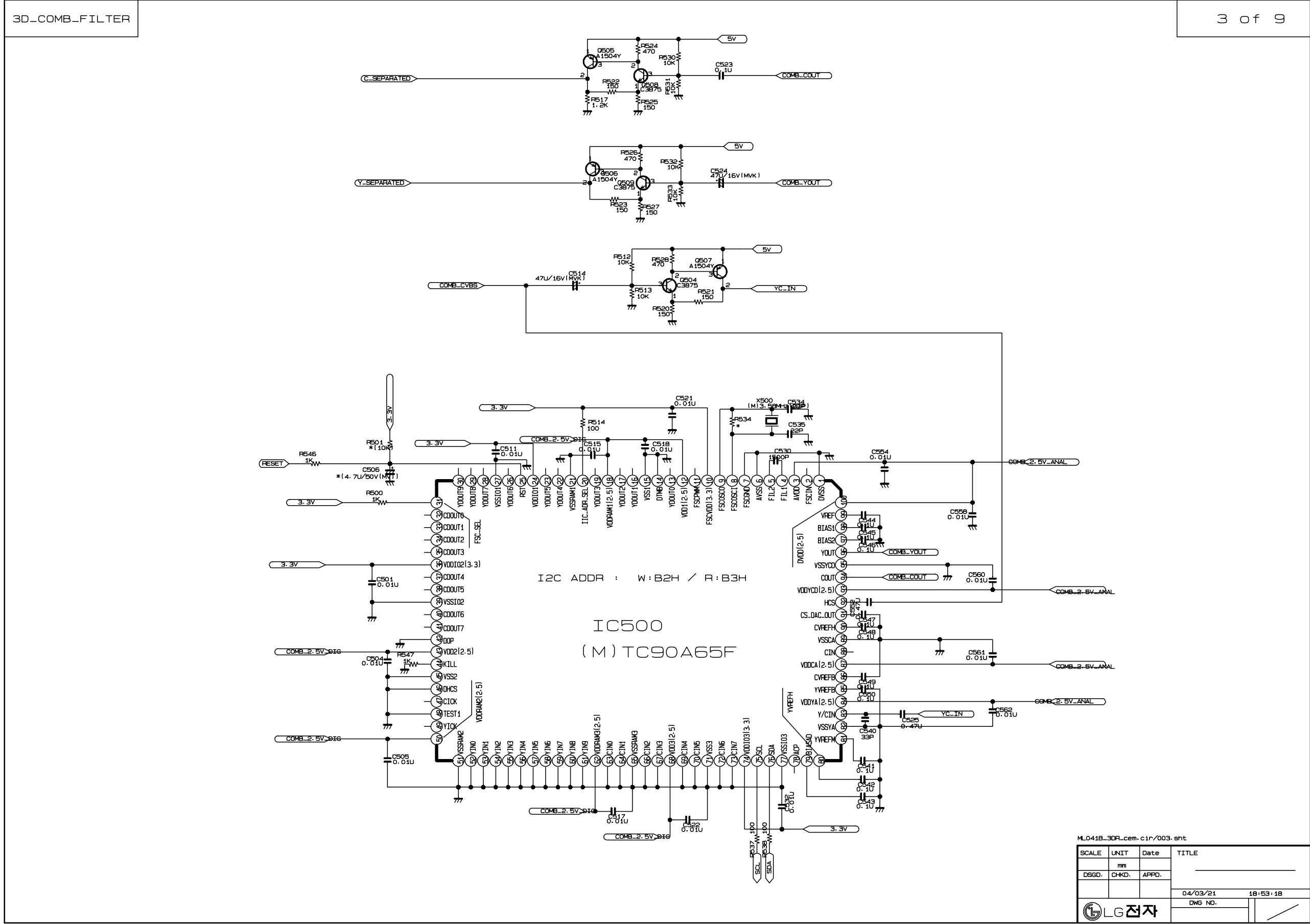
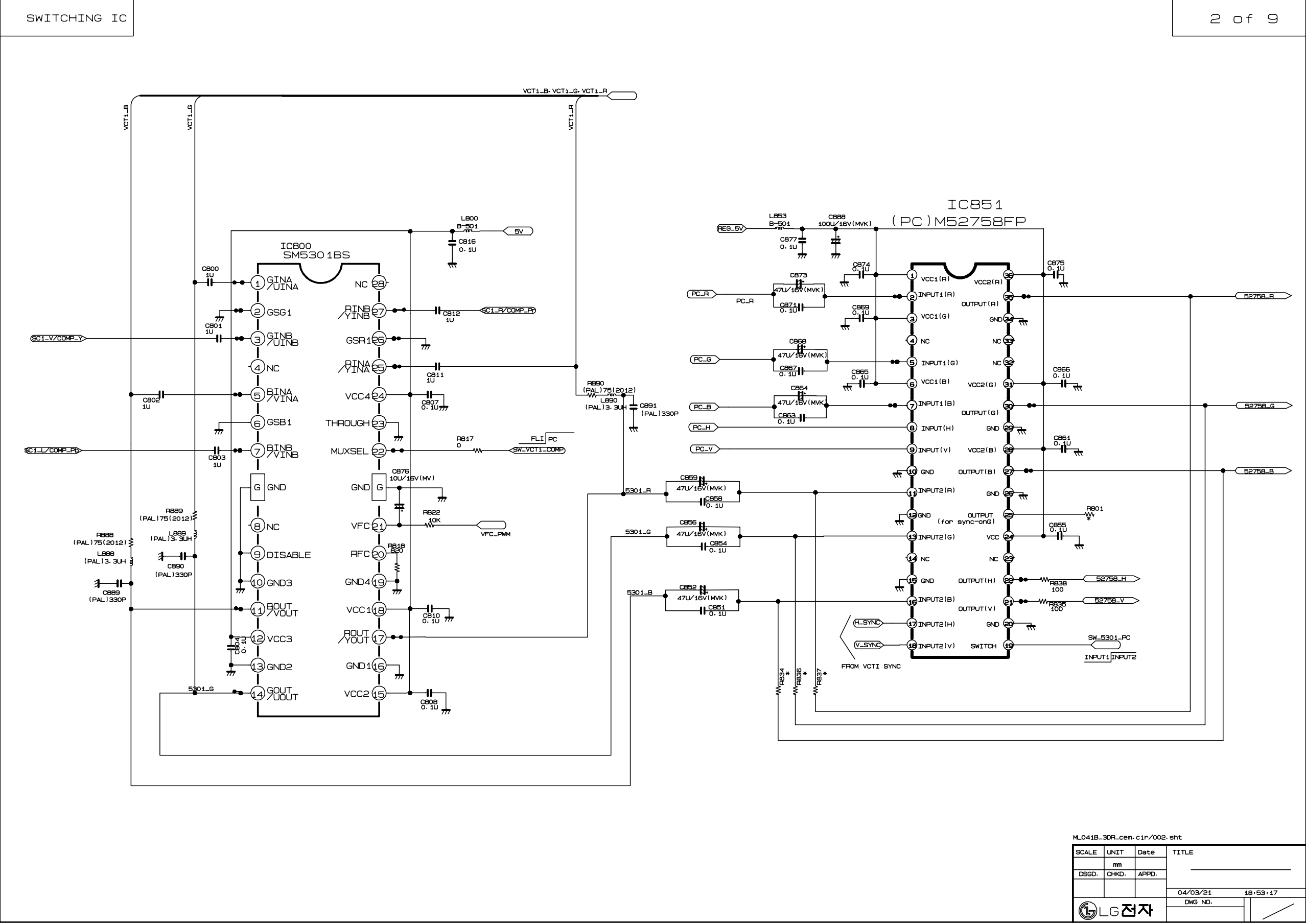
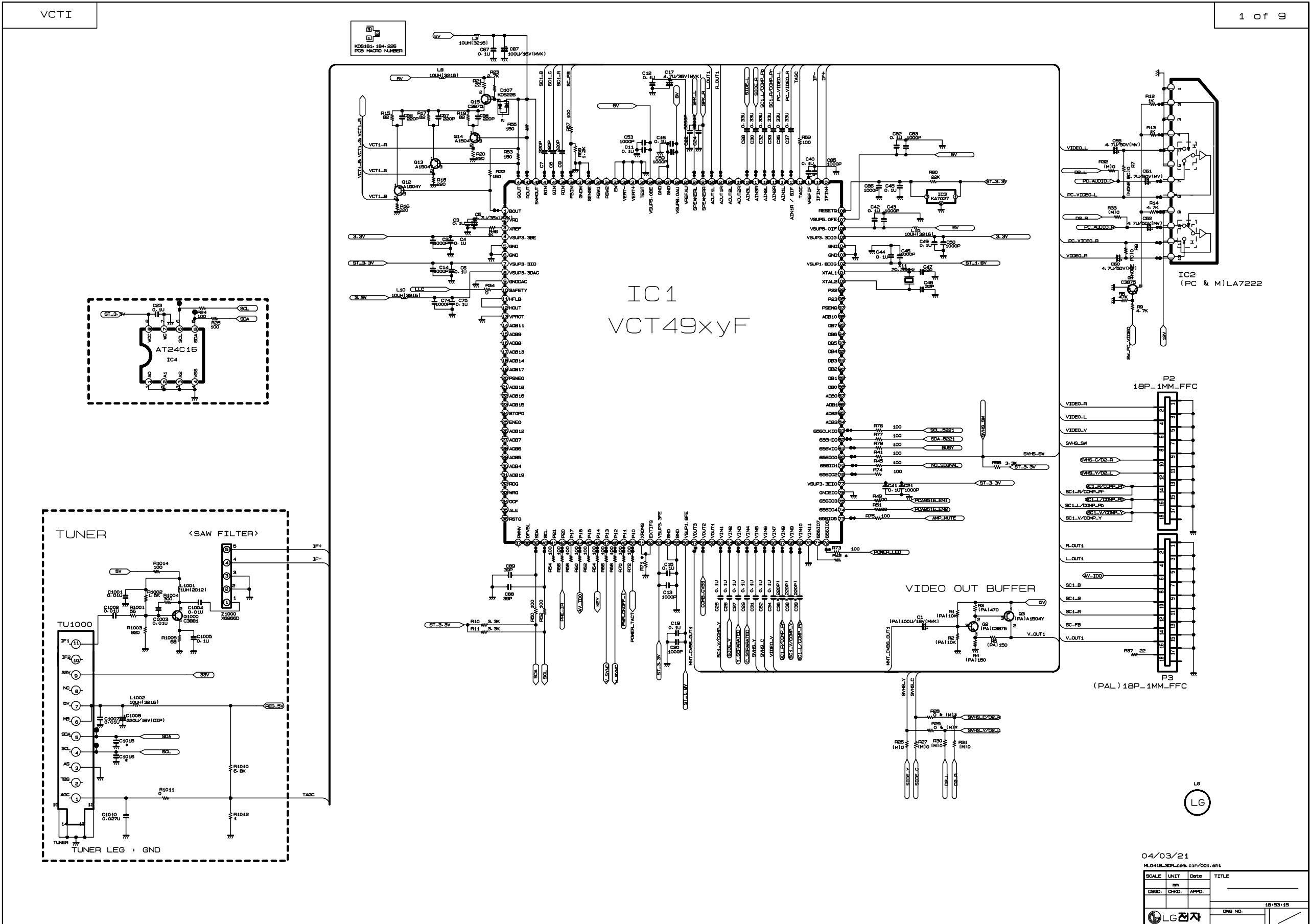
				DATE: 2004. 06.25.
*S	*AL	LOC. NO.	PART NO.	DESCRIPTION / SPECIFICATION
		L2 L8 L888 L889 L890	0LC1032101A 0LC1032101A 0LC0233002A 0LC0233002A 0LC0233002A	10UH 10% 3216 R/TC FI-C3216- 10UH 10% 3216 R/TC FI-C3216- 3.3UH CERATECH R/TP 3.3UH CERATECH R/TP 3.3UH CERATECH R/TP
FET & TRANSISTOR				
		IC902 IC1107 Q1 Q603 Q100 Q1000 Q101 Q1100 Q1151 Q12 Q13 Q14 Q15 Q2 Q3 IC1104	0TF492509AA 0TF492509AA 0TR387500AA 0TR387500AA 0TR387500AA 0TR388109AA 0TR150400BA 0TR387500AA 0TR387500AA 0TR150400BA 0TR150400BA 0TR150400BA 0TR150400BA 0TR387500AA 0TR387500AA 0TR150400BA 0TFVI80005A	SI4925DY TP TEMIC 30V 6.1A SI4925DY TP TEMIC 30V 6.1A CHIP 2SC3875S(ALY) BK KEC - CHIP 2SC3875S(ALY) BK KEC - CHIP 2SC3875S(ALY) BK KEC - KTC3881 CHIP TP KEC - - CHIP 2SA1504S(ASY) BK KEC - CHIP 2SC3875S(ALY) BK KEC - CHIP 2SC3875S(ALY) BK KEC - CHIP 2SA1504S(ASY) BK KEC - CHIP 2SA1504S(ASY) BK KEC - CHIP 2SA1504S(ASY) BK KEC - CHIP 2SA1504S(ASY) BK KEC - CHIP 2SC3875S(ALY) BK KEC - CHIP 2SC3875S(ALY) BK KEC - CHIP 2SA1504S(ASY) BK KEC - VISHAY SI4963DY R/TP SO-8 -2
RESISTORS				
		R1004 R1010 R1012 R106 R107 R1151 R1153 R126 R132 R133 R134 R135 R14 R140 R141 R142 R143 R144 R145 R146 R147 R201 R204 R211 R212 R213 R214 R215 R216 R217 R57 R59 R6 R818 R9	0RH3000D622 0RH7501D622 0RH7502D622 0RH1500D622 0RH1003D622 0RH4700D622 0RH1000D622 0RH4701D622 0RH1003D622 0RH1003D622 0RH1003D622 0RH1003D622 0RH4701D622 0RH0392D622 0RH0392D622 0RH0392D622 0RH0392D622 0RH0392D622 0RH0392D622 0RH0392D622 0RH0392D622 0RH4701D622 0RH4701D622 0RH0752D622 0RH0752D622 0RH0752D622 0RH4703D622 0RH8201D622 0RH8201D622 0RH4703D622 0RH1000D622 0RH1201D622 0RH4702D622 0RH8200D622 0RH4701D622	300 1/10W 5 D.R/TP 7.5K 1/10W 5 D.R/TP 75K 1/10W 5 D.R/TP 150 1/10W 5 D.R/TP 100K 1/10W 5 D.R/TP 470 1/10W 5 D.R/TP 100 1/10W 5 D.R/TP 4.7K 1/10W 5 D.R/TP 100K 1/10W 5 D.R/TP 100K 1/10W 5 D.R/TP 100K 1/10W 5 D.R/TP 100K 1/10W 5 D.R/TP 4.7K 1/10W 5 D.R/TP 39 1/10W 5 D.R/TP 39 1/10W 5 D.R/TP 39 1/10W 5 D.R/TP 39 1/10W 5 D.R/TP 39 1/10W 5 D.R/TP 39 1/10W 5 D.R/TP 39 1/10W 5 D.R/TP 4.7K 1/10W 5 D.R/TP 4.7K 1/10W 5 D.R/TP 75 1/10W 5 D.R/TP 75 1/10W 5 D.R/TP 75 1/10W 5 D.R/TP 470K 1/10W 5 D.R/TP 8.2K 1/10W 5 D.R/TP 8.2K 1/10W 5 D.R/TP 470K 1/10W 5 D.R/TP 100 1/10W 5 D.R/TP 1.2K 1/10W 5 D.R/TP 47K 1/10W 5 D.R/TP 820 1/10W 5 D.R/TP 4.7K 1/10W 5 D.R/TP

DATE: 2004. 06.25.				
*S	*AL	LOC. NO.	PART NO.	DESCRIPTION / SPECIFICATION
		R908	0RH0822D622	82 1/10W 5 D.R/TP
		R910	0RH0822D622	82 1/10W 5 D.R/TP
		R915	0RH3600D622	CHIP 360-J 1/10 W
		R934	0RH1000D622	100 1/10W 5 D.R/TP
		R989	0RH8200D622	820 1/10W 5 D.R/TP
		R999	0RH1000D622	100 1/10W 5 D.R/TP
		R136	0RH8202D622	82K 1/10W 5 D.R/TP
		R137	0RH8202D622	82K 1/10W 5 D.R/TP
		C932	0RH0000D622	0 OHM 1 / 10 W 2012 5.00% D
		C933	0RH0000D622	0 OHM 1 / 10 W 2012 5.00% D
		R1002	0RH1501D622	1.5K OHM 1 / 10 W 2012 5.00%
		R1011	0RH0000D622	0 OHM 1 / 10 W 2012 5.00% D
		R1106	0RH1002D622	10K OHM 1 / 10 W 2012 5.00%
		R1152	0RH1001D622	1K OHM 1 / 10 W 2012 5.00% D
		R1154	0RH0000D622	0 OHM 1 / 10 W 2012 5.00% D
		R12	0RH1001D622	1K OHM 1 / 10 W 2012 5.00% D
		R128	0RH1002D622	10K OHM 1 / 10 W 2012 5.00%
		R129	0RH1002D622	10K OHM 1 / 10 W 2012 5.00%
		R13	0RH1001D622	1K OHM 1 / 10 W 2012 5.00% D
		R202	0RH0222D622	22 OHM 1 / 10 W 2012 5.00% D
		R208	0RH0222D622	22 OHM 1 / 10 W 2012 5.00% D
		R209	0RH0222D622	22 OHM 1 / 10 W 2012 5.00% D
		R210	0RH0222D622	22 OHM 1 / 10 W 2012 5.00% D
		R36	0RH0000D622	0 OHM 1 / 10 W 2012 5.00% D
		R37	0RH0222D622	22 OHM 1 / 10 W 2012 5.00% D
		R817	0RH0000D622	0 OHM 1 / 10 W 2012 5.00% D
		R822	0RH1002D622	10K OHM 1 / 10 W 2012 5.00%
		R903	0RH0000D622	0 OHM 1 / 10 W 2012 5.00% D
		R961	0RH0000D622	0 OHM 1 / 10 W 2012 5.00% D
		R964	0RH1002D622	10K OHM 1 / 10 W 2012 5.00%
		R985	0RH0000D622	0 OHM 1 / 10 W 2012 5.00% D
		R993	0RH0000D622	0 OHM 1 / 10 W 2012 5.00% D
		R1	0RJ1002D677	10K OHM 1/10 W 5% 1608 R/TP
		R10	0RJ3301D677	3.3K OHM 1/10 W 5% 1608 R/TP
		R1001	0RJ0562D677	56 OHM 1/10 W 5% 1608 R/TP
		R1003	0RJ8200D677	820 OHM 1/10 W 5% 1608 R/TP
		R1005	0RJ0682D677	68 OHM 1/10 W 5% 1608 R/TP
		R1014	0RJ1000D677	100 OHM 1/10 W 5% 1608 R/TP
		R11	0RJ3301D677	3.3K OHM 1/10 W 5% 1608 R/TP
		R1105	0RJ1001D677	1K OHM 1/10 W 5% 1608 R/TP
		R1107	0RJ4701D677	4.7K OHM 1/10 W 5% 1608 R/TP
		R1150	0RJ0102D677	10 OHM 1/10 W 5% 1608 R/TP
		R124	0RJ1500D677	150 OHM 1/10 W 5% 1608 R/TP
		R125	0RJ4701D677	4.7K OHM 1/10 W 5% 1608 R/TP
		R127	0RJ2701D677	2.7K OHM 1/10 W 5% 1608 R/TP
		R130	0RJ1202D677	12K OHM 1/10 W 5% 1608 R/TP
		R131	0RJ1202D677	12K OHM 1/10 W 5% 1608 R/TP
		R138	0RJ1002D677	10K OHM 1/10 W 5% 1608 R/TP
		R139	0RJ1002D677	10K OHM 1/10 W 5% 1608 R/TP
		R15	0RJ0822D677	82 OHM 1/10 W 5% 1608 R/TP
		R16	0RJ2200D677	220 OHM 1/10 W 5% 1608 R/TP
		R17	0RJ0822D677	82 OHM 1/10 W 5% 1608 R/TP
		R18	0RJ2200D677	220 OHM 1/10 W 5% 1608 R/TP
		R19	0RJ0822D677	82 OHM 1/10 W 5% 1608 R/TP
		R2	0RJ1002D677	10K OHM 1/10 W 5% 1608 R/TP
		R20	0RJ2200D677	220 OHM 1/10 W 5% 1608 R/TP
		R203	0RJ1000D677	100 OHM 1/10 W 5% 1608 R/TP
		R205	0RJ0222D677	22 OHM 1/10 W 5% 1608 R/TP
		R206	0RJ1001D677	1K OHM 1/10 W 5% 1608 R/TP
		R207	0RJ1001D677	1K OHM 1/10 W 5% 1608 R/TP
		R21	0RJ0222D677	22 OHM 1/10 W 5% 1608 R/TP
		R22	0RJ1500D677	150 OHM 1/10 W 5% 1608 R/TP

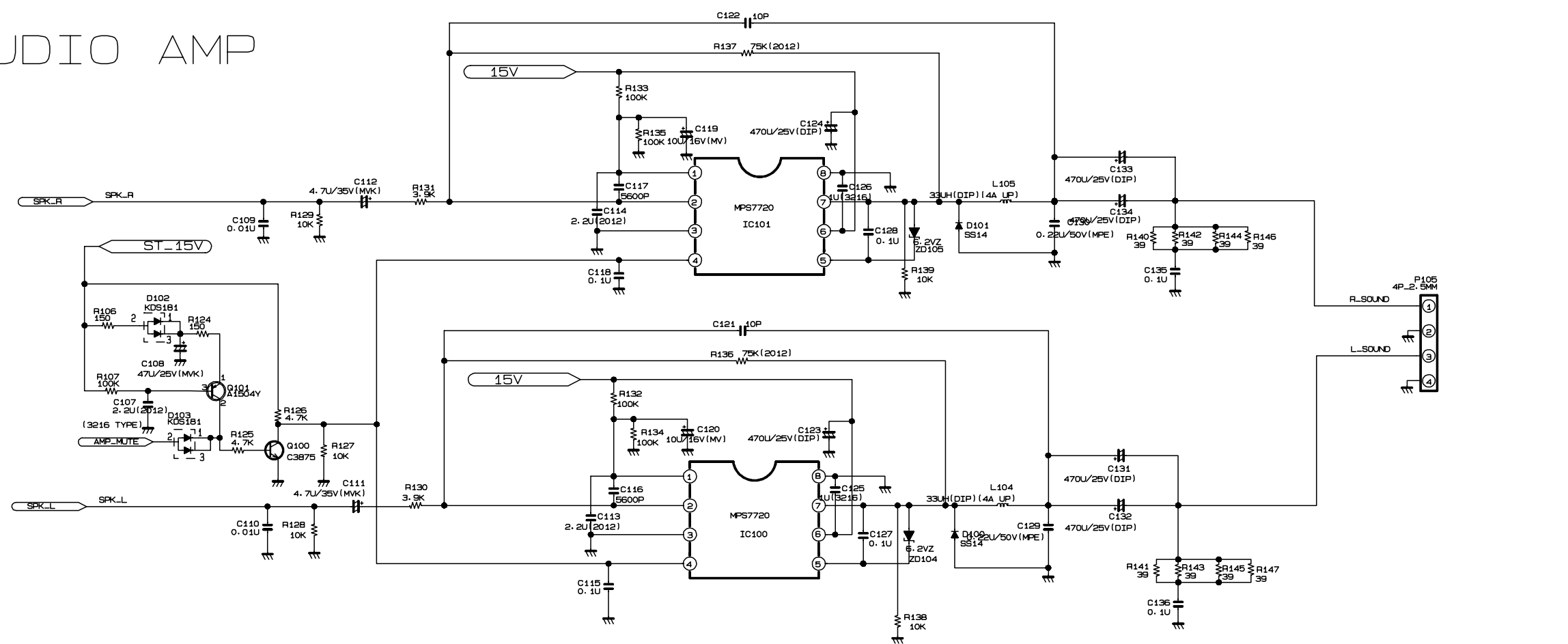
DATE: 2004. 06.25.				
*S	*AL	LOC. NO.	PART NO.	DESCRIPTION / SPECIFICATION
		R220	0RJ7502D677	75K OHM 1/10 W 5% 1608 R/TP
		R221	0RJ1000D677	100 OHM 1/10 W 5% 1608 R/TP
		R224	0RJ1000D677	100 OHM 1/10 W 5% 1608 R/TP
		R225	0RJ1000D677	100 OHM 1/10 W 5% 1608 R/TP
		R226	0RJ1000D677	100 OHM 1/10 W 5% 1608 R/TP
		R23	0RJ2701D677	2.7K OHM 1/10 W 5% 1608 R/TP
		R230	0RJ7502D677	75K OHM 1/10 W 5% 1608 R/TP
		R24	0RJ1000D677	100 OHM 1/10 W 5% 1608 R/TP
		R240	0RJ1000D677	100 OHM 1/10 W 5% 1608 R/TP
		R25	0RJ1000D677	100 OHM 1/10 W 5% 1608 R/TP
		R28	0RJ0000D677	0 OHM 1/10 W 5% 1608 R/TP
		R29	0RJ0000D677	0 OHM 1/10 W 5% 1608 R/TP
		R3	0RJ4700D677	470 OHM 1/10 W 5% 1608 R/TP
		R34	0RJ0000D677	0 OHM 1/10 W 5% 1608 R/TP
		R4	0RJ1500D677	150 OHM 1/10 W 5% 1608 R/TP
		R41	0RJ1000D677	100 OHM 1/10 W 5% 1608 R/TP
		R45	0RJ1000D677	100 OHM 1/10 W 5% 1608 R/TP
		R46	0RJ1001D677	1K OHM 1/10 W 5% 1608 R/TP
		R49	0RJ1000D677	100 OHM 1/10 W 5% 1608 R/TP
		R5	0RJ1500D677	150 OHM 1/10 W 5% 1608 R/TP
		R50	0RJ1000D677	100 OHM 1/10 W 5% 1608 R/TP
		R51	0RJ1000D677	100 OHM 1/10 W 5% 1608 R/TP
		R52	0RJ1000D677	100 OHM 1/10 W 5% 1608 R/TP
		R53	0RJ1500D677	150 OHM 1/10 W 5% 1608 R/TP
		R54	0RJ1000D677	100 OHM 1/10 W 5% 1608 R/TP
		R55	0RJ1500D677	150 OHM 1/10 W 5% 1608 R/TP
		R56	0RJ1000D677	100 OHM 1/10 W 5% 1608 R/TP
		R58	0RJ1000D677	100 OHM 1/10 W 5% 1608 R/TP
		R60	0RJ1000D677	100 OHM 1/10 W 5% 1608 R/TP
		R62	0RJ1000D677	100 OHM 1/10 W 5% 1608 R/TP
		R64	0RJ1000D677	100 OHM 1/10 W 5% 1608 R/TP
		R66	0RJ1000D677	100 OHM 1/10 W 5% 1608 R/TP
		R68	0RJ1000D677	100 OHM 1/10 W 5% 1608 R/TP
		R69	0RJ1000D677	100 OHM 1/10 W 5% 1608 R/TP
		R70	0RJ1000D677	100 OHM 1/10 W 5% 1608 R/TP
		R72	0RJ1000D677	100 OHM 1/10 W 5% 1608 R/TP
		R73	0RJ1000D677	100 OHM 1/10 W 5% 1608 R/TP
		R74	0RJ1000D677	100 OHM 1/10 W 5% 1608 R/TP
		R75	0RJ1000D677	100 OHM 1/10 W 5% 1608 R/TP
		R76	0RJ1000D677	100 OHM 1/10 W 5% 1608 R/TP
		R77	0RJ1000D677	100 OHM 1/10 W 5% 1608 R/TP
		R78	0RJ1000D677	100 OHM 1/10 W 5% 1608 R/TP
		R80	0RJ2202D677	22K OHM 1/10 W 5% 1608 R/TP
		R835	0RJ1000D677	100 OHM 1/10 W 5% 1608 R/TP
		R838	0RJ1000D677	100 OHM 1/10 W 5% 1608 R/TP
		R888	0RJ0752D677	75 OHM 1/10 W 5% 1608 R/TP
		R889	0RJ0752D677	75 OHM 1/10 W 5% 1608 R/TP
		R890	0RJ0752D677	75 OHM 1/10 W 5% 1608 R/TP
		R901	0RJ0472D677	47 OHM 1/10 W 5% 1608 R/TP
		R902	0RJ0472D677	47 OHM 1/10 W 5% 1608 R/TP
		R904	0RJ0472D677	47 OHM 1/10 W 5% 1608 R/TP
		R907	0RJ3301D677	3.3K OHM 1/10 W 5% 1608 R/TP
		R909	0RJ0822D677	82 OHM 1/10 W 5% 1608 R/TP
		R911	0RJ4701D677	4.7K OHM 1/10 W 5% 1608 R/TP
		R912	0RJ1000D677	100 OHM 1/10 W 5% 1608 R/TP
		R913	0RJ0000D677	0 OHM 1/10 W 5% 1608 R/TP
		R914	0RJ0000D677	0 OHM 1/10 W 5% 1608 R/TP
		R917	0RJ0000D677	0 OHM 1/10 W 5% 1608 R/TP
		R928	0RJ1000D677	100 OHM 1/10 W 5% 1608 R/TP
		R929	0RJ1000D677	100 OHM 1/10 W 5% 1608 R/TP
		R930	0RJ1000D677	100 OHM 1/10 W 5% 1608 R/TP
		R931	0RJ1000D677	100 OHM 1/10 W 5% 1608 R/TP

DATE: 2004. 06.25.				
*S	*AL	LOC. NO.	PART NO.	DESCRIPTION / SPECIFICATION
		R932	0RJ1000D677	100 OHM 1/10 W 5% 1608 R/TP
		R935	0RJ1000D677	100 OHM 1/10 W 5% 1608 R/TP
		R936	0RJ1000D677	100 OHM 1/10 W 5% 1608 R/TP
		R938	0RJ1002D677	10K OHM 1/10 W 5% 1608 R/TP
		R939	0RJ1000D677	100 OHM 1/10 W 5% 1608 R/TP
		R941	0RJ1000D677	100 OHM 1/10 W 5% 1608 R/TP
		R942	0RJ1000D677	100 OHM 1/10 W 5% 1608 R/TP
		R943	0RJ1000D677	100 OHM 1/10 W 5% 1608 R/TP
		R944	0RJ1000D677	100 OHM 1/10 W 5% 1608 R/TP
		R945	0RJ1000D677	100 OHM 1/10 W 5% 1608 R/TP
		R946	0RJ1000D677	100 OHM 1/10 W 5% 1608 R/TP
		R947	0RJ1000D677	100 OHM 1/10 W 5% 1608 R/TP
		R953	0RJ3301D677	3.3K OHM 1/10 W 5% 1608 R/TP
		R954	0RJ1002D677	10K OHM 1/10 W 5% 1608 R/TP
		R96	0RJ3301D677	3.3K OHM 1/10 W 5% 1608 R/TP
		R979	0RJ3301D677	3.3K OHM 1/10 W 5% 1608 R/TP
		R980	0RJ1000D677	100 OHM 1/10 W 5% 1608 R/TP
		R981	0RJ1000D677	100 OHM 1/10 W 5% 1608 R/TP
		R982	0RJ1000D677	100 OHM 1/10 W 5% 1608 R/TP
		R983	0RJ1000D677	100 OHM 1/10 W 5% 1608 R/TP
		R984	0RJ1000D677	100 OHM 1/10 W 5% 1608 R/TP
		R991	0RJ3301D677	3.3K OHM 1/10 W 5% 1608 R/TP
		R992	0RJ3301D677	3.3K OHM 1/10 W 5% 1608 R/TP
OTHERs				
		Z1000	6200QL3002F	"X6966M EPCOS ST SIP5K, 6200Q"
		JA201	6612VCH003B	PEJ012C PARK ELEC H=6.5 STER
		Q1150	0TR322809AB	KTC3228-Y(KTC2383) TP KEC TO
		X11	6202VDT002E	SX-1SMD SUNNY RADIAL 2025000
		X900	6202VDT002B	SX-1 SUNNY SC14.3MHZ +/- 30
		IC905	6620F00017A	CCSD-32T-SM WOYOUNG 32P PLC
		TU1000	6700VS0003A	TAEW-G051D LG INOTEK MULTI V
CONTROL BOARD				
		R2200	0RN1101F409	1.10K 1/6W 1% TA52
		R2201	0RN8200F409	820 1/6W 1% TA52
		R2202	0RN5600F409	560 1/6W 1% TA52
		R2203	0RN4700F409	470 1/6W 1% TA52
		R2204	0RN3900F409	390 1/6W 1% TA52
		R2205	0RN3300F409	330 1/6W 1% TA52
		R2206	0RN2700F409	270 1/6W 1% TA52
		R2207	0RN3301F409	3.30K 1/6W 1% TA52
		R2208	0RN2000F409	200 1/6W 1% TA52
		SW2200	140-313A	TACT 2LEAD 100G(TA) LG C&D N
		SW2201	140-313A	TACT 2LEAD 100G(TA) LG C&D N
		SW2202	140-313A	TACT 2LEAD 100G(TA) LG C&D N
		SW2203	140-313A	TACT 2LEAD 100G(TA) LG C&D N
		SW2204	140-313A	TACT 2LEAD 100G(TA) LG C&D N
		SW2205	140-313A	TACT 2LEAD 100G(TA) LG C&D N
		SW2206	140-313A	TACT 2LEAD 100G(TA) LG C&D N
		SW2207	140-313A	TACT 2LEAD 100G(TA) LG C&D N
IR BOARD				
		C2101	0CH3104K566	0.1UF 50V 10% X7R 2012 R/TP
		L2101	6210TCE001A	HB-1S2012-080JT CERATEC 2012
		Q2101	0TR150400BA	CHIP 2SA1504S(ASY) BK KEC -
		R2101	0RH1000D622	100 1/10W 5 D.R/TP
		R2102	0RH1201D622	1.2K 1/10W 5 D.R/TP
		R2103	0RH2200D622	220 1/10W 5 D.R/TP

DATE: 2004. 06.25.				
*S	*AL	LOC. NO.	PART NO.	DESCRIPTION / SPECIFICATION
		R2111	0RH4301D622	4.3K 1/10W 5 TA
		LED2100	0DL100000AE	SA5711(DL-1LO) BK AMBER -
		PA2101	6726TV0001A	TSOP4838SO1 VISHAY 38.0KHZ H
AV BOARD				
		C2302	0CH6471K416	470F 50V J NP0 2012 R/TP
		C2303	0CH6471K416	470F 50V J NP0 2012 R/TP
		C2306	0CH6391K416	390PF 50V 5% NP0 2012 R/TP
		L2303	0LC1032101A	10UH 10% 3216 R/TC FI-C3216-
		L2304	0LC1032101A	10UH 10% 3216 R/TC FI-C3216-
		L2306	0LC0233002A	3.3UH CERATECH R/TP
		R2304	0RH0752D622	75 1/10W 5 D.R/TP
		R2305	0RH4703D622	470K 1/10W 5 D.R/TP
		R2306	0RH4703D622	470K 1/10W 5 D.R/TP
		R2308	0RH5101D622	5.1K 1/10W 5 D.R/TP
		R2309	0RH5101D622	5.1K 1/10W 5 D.R/TP
		R2310	0RH0752D622	75 1/10W 5 D.R/TP
		ZD2303	0DZ620009HB	UDZ S 6.2B TP ROHM SOD323 20
		ZD2304	0DZ620009HB	UDZ S 6.2B TP ROHM SOD323 20
		ZD2306	0DZ620009HB	UDZ S 6.2B TP ROHM SOD323 20
		JA2300	6613V00004Q	"PJ6054Q PARK ELE RLC 3P(Y,L,"
JACK BOARD				
		C1201	0CH6221K416	220PF 50V J NP0 2012 R/TP
		C1202	0CH6101K416	100PF 50V J NP0 2012 R/TP
		C1207	0CH6471K416	470F 50V J NP0 2012 R/TP
		C1208	0CH6471K416	470F 50V J NP0 2012 R/TP
		C1215	0CH3103K516	10000PF 50V 10% B(Y5P) 2012
		C1216	0CH3103K516	10000PF 50V 10% B(Y5P) 2012
		C1221	0CH6331K416	330PF 50V J NP0 2012 R/TP
		C1223	0CH6471K416	470F 50V J NP0 2012 R/TP
		C1224	0CH6471K416	470F 50V J NP0 2012 R/TP
		L1200	0LC1020101A	1UH 10% 2012 R/TC FI-B2012-1
		L1202	6210TCE001A	HB-1S2012-080JT CERATEC 2012
		L1203	6210TCE001A	HB-1S2012-080JT CERATEC 2012
		L1206	6210TCE001A	HB-1S2012-080JT CERATEC 2012
		L1207	6210TCE001A	HB-1S2012-080JT CERATEC 2012
		L1208	6210TCE001A	HB-1S2012-080JT CERATEC 2012
		L1211	6210TCE001A	HB-1S2012-080JT CERATEC 2012
		L1212	0LC0233002A	3.3UH CERATECH R/TP
		L1213	6210TCE001A	HB-1S2012-080JT CERATEC 2012
		L1214	6210TCE001A	HB-1S2012-080JT CERATEC 2012
		L1215	6210TCE001A	HB-1S2012-080JT CERATEC 2012
		R1200	0RH0682D622	68 1/10W 5 D.R/TP
		R1201	0RH0222D622	22 OHM 1 / 10 W 2012 5.00% D
		R1202	0RH0752D622	75 1/10W 5 D.R/TP
		R1205	0RH0222D622	22 OHM 1 / 10 W 2012 5.00% D
		R1206	0RH0752D622	75 1/10W 5 D.R/TP
		R1217	0RH4703D622	470K 1/10W 5 D.R/TP
		R1218	0RH5101D622	5.1K 1/10W 5 D.R/TP
		R1219	0RH5101D622	5.1K 1/10W 5 D.R/TP
		R1220	0RH4703D622	470K 1/10W 5 D.R/TP
		R1224	0RJ1000H680	100 OHM 1/2 W 5% 5025 R/TP
		R1225	0RJ1000H680	100 OHM 1/2 W 5% 5025 R/TP
		R1230	0RH0752D622	75 1/10W 5 D.R/TP
		R1231	0RH0752D622	75 1/10W 5 D.R/TP
		R1232	0RH5101D622	5.1K 1/10W 5 D.R/TP
		R1233	0RH4703D622	470K 1/10W 5 D.R/TP
		R1234	0RH5101D622	5.1K 1/10W 5 D.R/TP
		R1235	0RH4703D622	470K 1/10W 5 D.R/TP



AUDIO AMP



ML0418-30FL-000.cir/005.sht

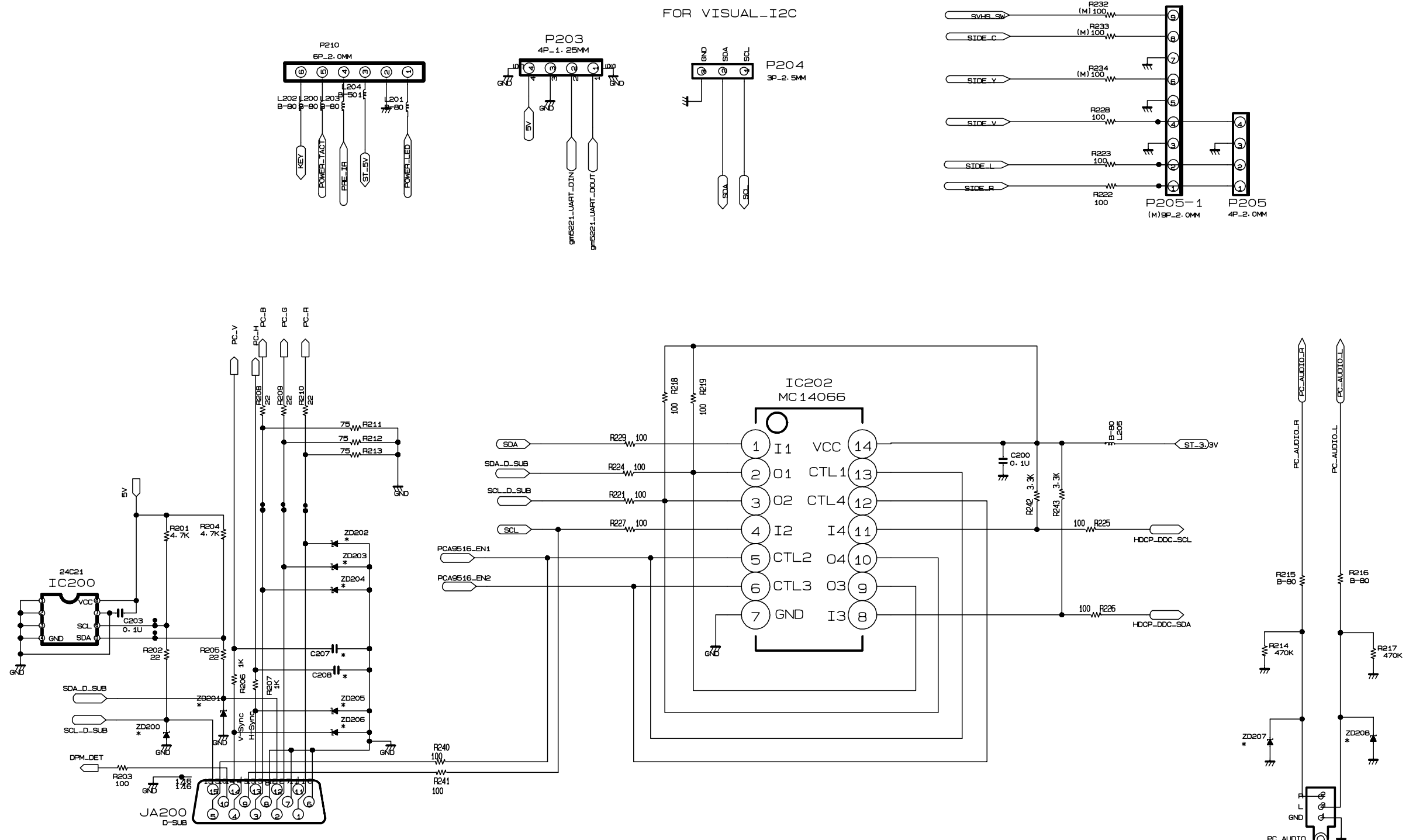
SCALE UNIT Dwg# TITLE

mm mm mm mm

04/03/21 18-13-21

Dwg NO.

LG전자



ML0418-30FL-000.cir/006.sht

SCALE UNIT Dwg# TITLE

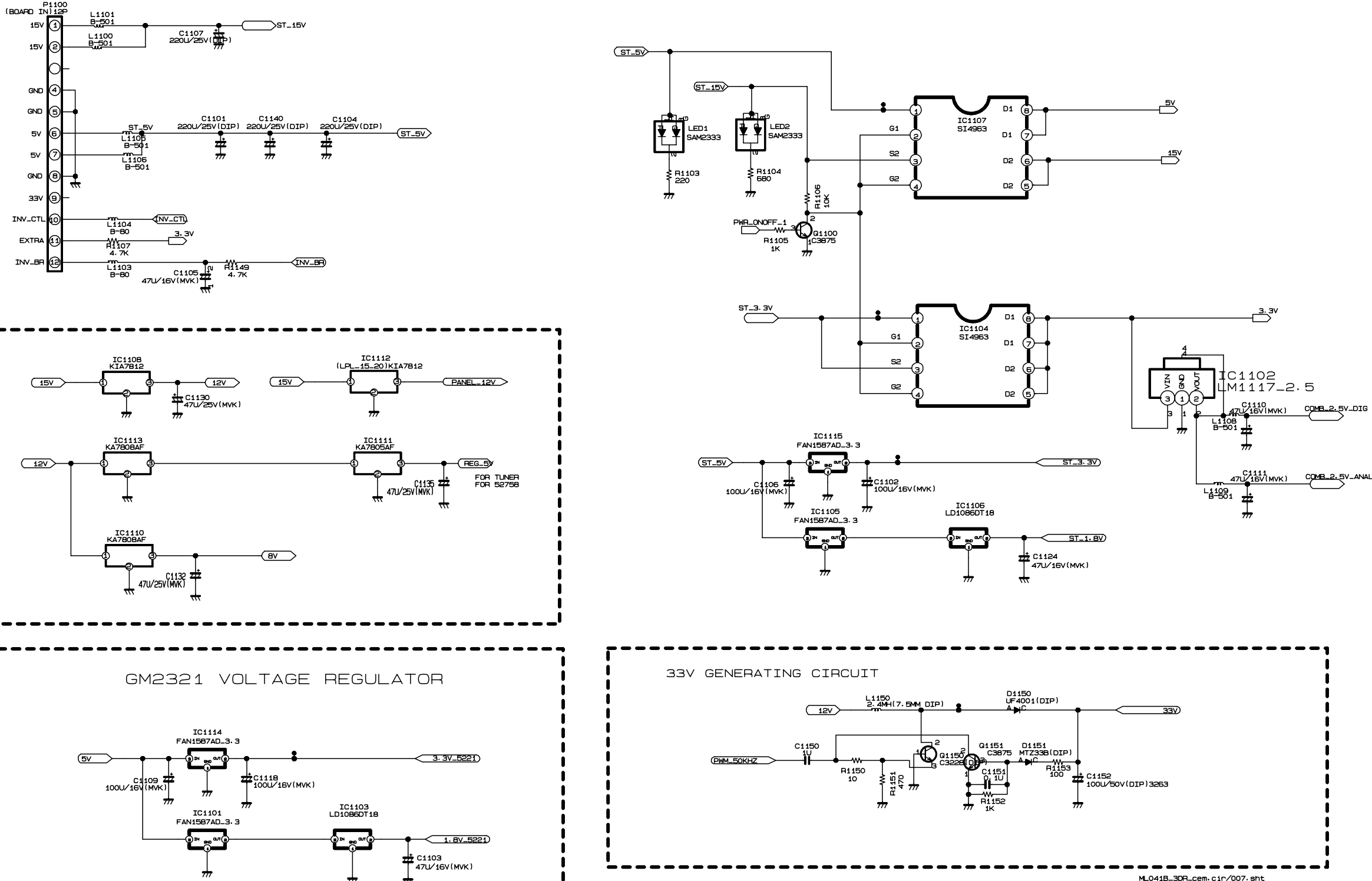
mm mm mm mm

04/03/21 18-13-23

Dwg NO.

LG전자

FROM LIPS



ML0418-30FL-000.cir/007.sht

SCALE UNIT Dwg# TITLE

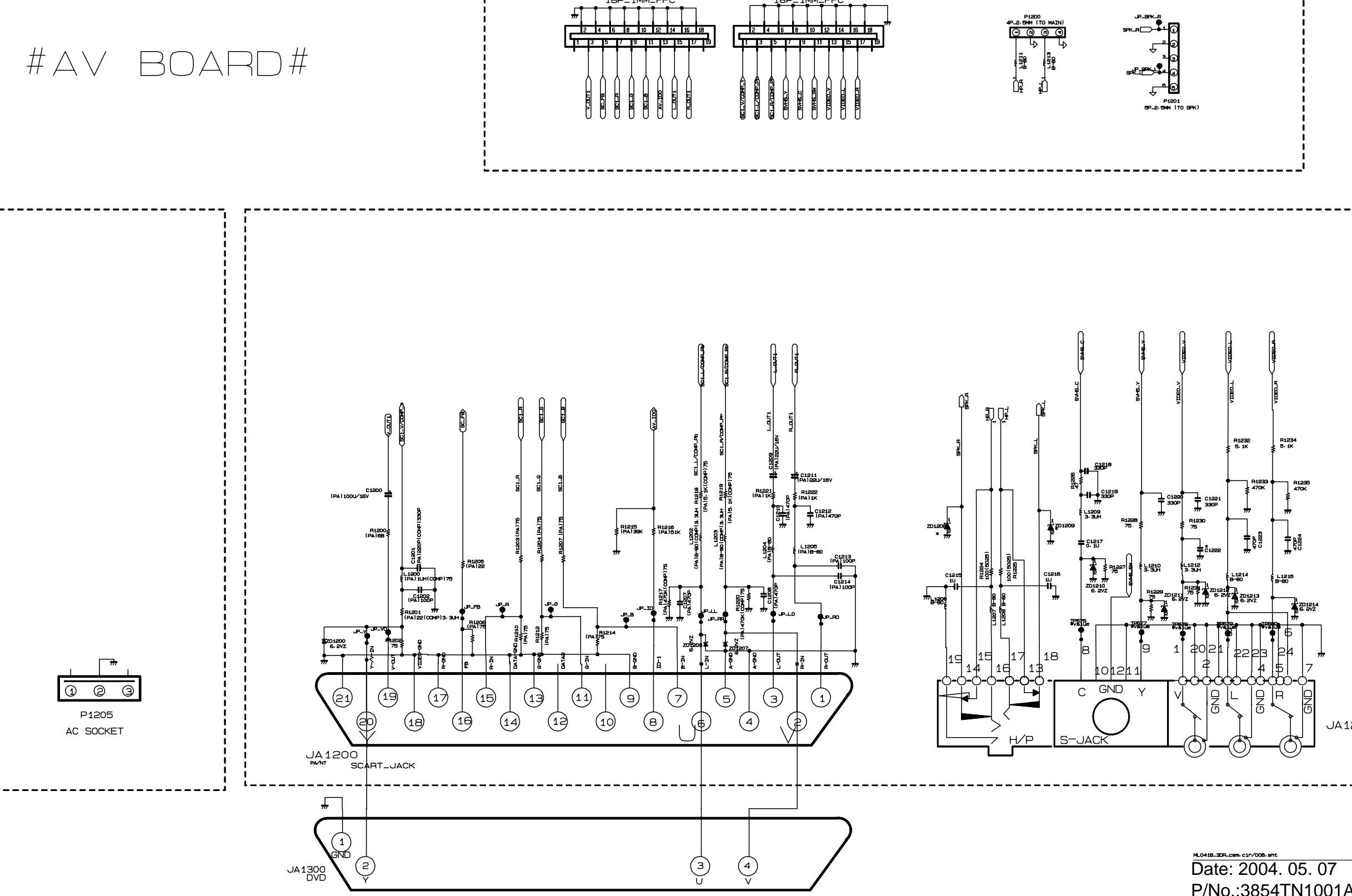
mm mm mm mm

04/03/21 18-13-24

Dwg NO.

LG전자

#AV BOARD#



ML0418-30FL-000.cir/008.sht

Date: 2004. 05. 07

P/No.:3854TN1001A



P/NO : 3828TSL103C

Aug., 2004
Printed in Korea